

**Protein Phosphatase 4C mouse mAb**

<b>Catalog No :</b>	YM1227
<b>Reactivity :</b>	Human
<b>Applications :</b>	WB;IHC;ICC
<b>Target :</b>	PPX
<b>Fields :</b>	>>Glucagon signaling pathway
<b>Gene Name :</b>	ppp4c
<b>Human Gene Id :</b>	5531
<b>Human Swiss Prot No :</b>	P60510
<b>Mouse Swiss Prot No :</b>	P97470
<b>Immunogen :</b>	Purified recombinant human Protein Phosphatase 4C protein fragments expressed in E.coli.
<b>Specificity :</b>	This antibody detects endogenous levels of Protein Phosphatase 4C and does not cross-react with related proteins.
<b>Formulation :</b>	Liquid in PBS containing 50% glycerol, 0.5% BSA and 0.02% sodium azide.
<b>Source :</b>	Monoclonal, Mouse
<b>Dilution :</b>	wb 1:200 icc 1:200
<b>Purification :</b>	The antibody was affinity-purified from mouse ascites by affinity-chromatography using epitope-specific immunogen.
<b>Concentration :</b>	1 mg/ml
<b>Storage Stability :</b>	-15°C to -25°C/1 year(Do not lower than -25°C)
<b>Observed Band :</b>	34kD

**Background :** catalytic activity:A phosphoprotein + H(2)O = a protein + phosphate.,cofactor:Binds 1 iron ion per subunit.,cofactor:Binds 1 manganese ion per subunit.,function:Protein phosphatase that is involved in many processes such as microtubule organization at centrosomes, maturation of spliceosomal snRNPs, apoptosis, tumor necrosis factor (TNF)-alpha signaling, activation of c-Jun N-terminal kinase MAPK8, regulation of histone acetylation, DNA damage checkpoint signaling, NF-kappa-B activation and cell migration. The PPP4C-PPP4R1 PP4 complex may play a role in dephosphorylation and regulation of HDAC3. The PPP4C-PPP4R2-PPP4R3A PP4 complex specifically dephosphorylates H2AFX phosphorylated on Ser-140 (gamma-H2AFX) generated during DNA replication and required for DNA DSB repair. Dephosphorylates NDEL1 at CDC2/Cdk1 phosphorylation sites and negatively regulates CDC2/Cdk1 activity in interphase.,similarity:Belongs to the PPP phosphatase family.,similarity:Belongs to the PPP phosphatase family. PP-4 (PP-X) subfamily.,subunit:Serine/threonine-protein phosphatase 4 (PP4) occurs in different assemblies of the catalytic and one or more regulatory subunits. Component of the PP4 complexes PPP4C-PPP4R1, PPP4C-PPP4R2, PPP4C-PPP4R2-PPP4R3A, PPP4C-PPP4R2-PPP4R3B and PPP4C-PPP4R4. The PPP4C-PPP4R2 complex appears to be a tetramer composed of 2 molecules of PPP4C and 2 molecules of PPP4R2. Interacts with REL, NFKB1/p50 and RELA. Interacts with SMN1 AND GEMIN4. Interacts with IRS4 (phosphorylated). Interacts with SMEK1/PPP4R3A; the interaction requires PP4R2. Interacts with HDAC3.,

---

**Function :** catalytic activity:A phosphoprotein + H(2)O = a protein + phosphate.,cofactor:Binds 1 iron ion per subunit.,cofactor:Binds 1 manganese ion per subunit.,function:Protein phosphatase that is involved in many processes such as microtubule organization at centrosomes, maturation of spliceosomal snRNPs, apoptosis, tumor necrosis factor (TNF)-alpha signaling, activation of c-Jun N-terminal kinase MAPK8, regulation of histone acetylation, DNA damage checkpoint signaling, NF-kappa-B activation and cell migration. The PPP4C-PPP4R1 PP4 complex may play a role in dephosphorylation and regulation of HDAC3. The PPP4C-PPP4R2-PPP4R3A PP4 complex specifically dephosphorylates H2AFX phosphorylated on Ser-140 (gamma-H2AFX) generated during DNA replication and required for DNA DSB repair. Dephosphorylates NDEL1 at CDC2/Cdk1 phosphorylation sites and negatively regulates CDC2/Cdk1 activity in interphase.,si

---

**Subcellular Location :** Cytoplasm. Nucleus. Cytoplasm, cytoskeleton, microtubule organizing center, centrosome.

---

**Expression :** Placenta,

---

**Sort :** 13068

---

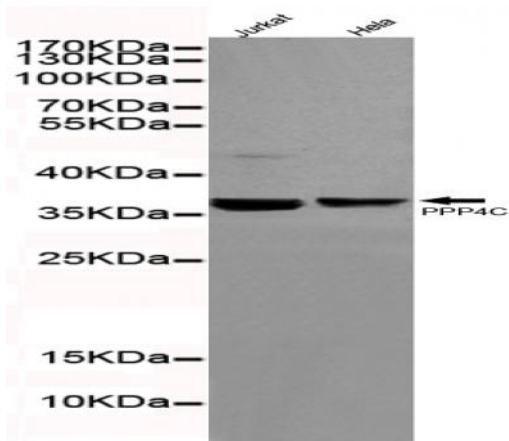
**No4 :** 1

---

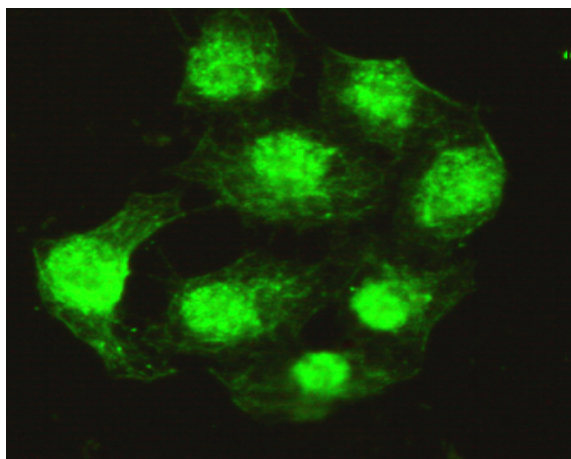
**Host :** Mouse

---

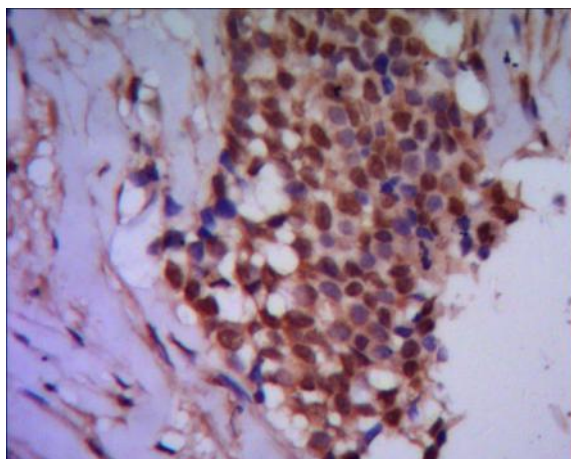
## Products Images



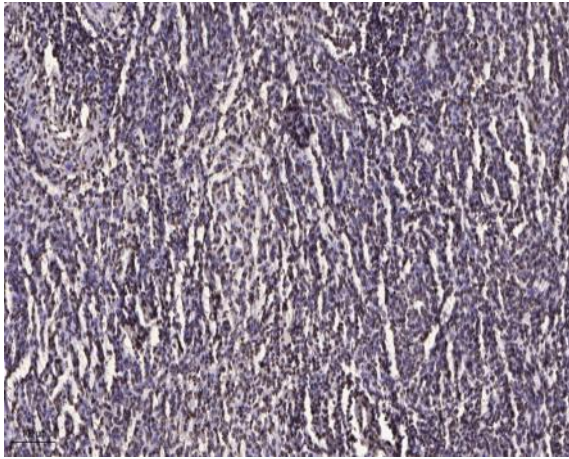
Western blot detection of Protein Phosphatase 4C in HeLa and Jurkat cell lysates using Protein Phosphatase 4C mouse mAb (1:200 diluted). Predicted band size: 34KDa. Observed band size: 34KDa.



Immunocytochemistry of HeLa cells using anti-Protein Phosphatase 4C mouse mAb diluted 1:200.



IHC of paraffin-embedded human breast cancer using anti-Protein Phosphatase 4C mouse mAb diluted 1/500-1/1000.



Immunohistochemical analysis of paraffin-embedded human brain tumor. 1, Antibody was diluted at 1:200(4° overnight). 2, Tris-EDTA,pH9.0 was used for antigen retrieval. 3,Secondary antibody was diluted at 1:200(room temperature, 45min).