

LRRFIP1 mouse mAb

Catalog No :	YM1320
Reactivity :	Human;Mouse
Applications :	WB
Target :	LRRFIP1
Gene Name :	lrrfip1
Human Gene Id :	9208
Human Swiss Prot No :	Q32MZ4
Mouse Swiss Prot No :	Q3UZ39
Immunogen :	Purified recombinant human LRRFIP1 protein fragments expressed in E.coli.
Specificity :	This antibody detects endogenous levels of LRRFIP1 and does not cross-react with related proteins.
Formulation :	Liquid in PBS containing 50% glycerol, 0.5% BSA and 0.02% sodium azide.
Source :	Monoclonal, Mouse
Dilution :	wb 1:1000
Purification :	The antibody was affinity-purified from mouse ascites by affinity-chromatography using epitope-specific immunogen.
Concentration :	1 mg/ml
Storage Stability :	-15°C to -25°C/1 year(Do not lower than -25°C)
Observed Band :	160kD
Background :	developmental stage:Widely expressed in fetal tissues.,function:Transcriptional repressor which preferentially binds to the GC-rich consensus sequence

(5'-AGCCCCCGGCG-3') and may regulate expression of TNF, EGFR and PDGFA. May control smooth muscle cells proliferation following artery injury through PDGFA repression. May also bind double-stranded RNA.,sequence caution:Contaminating sequence. Potential poly-A sequence.,similarity:Belongs to the LRRFIP family.,subunit:Interacts with FLII.,tissue specificity:Ubiquitously expressed.,

Function :

developmental stage:Widely expressed in fetal tissues.,function:Transcriptional repressor which preferentially binds to the GC-rich consensus sequence (5'-AGCCCCCGGCG-3') and may regulate expression of TNF, EGFR and PDGFA. May control smooth muscle cells proliferation following artery injury through PDGFA repression. May also bind double-stranded RNA.,sequence caution:Contaminating sequence. Potential poly-A sequence.,similarity:Belongs to the LRRFIP family.,subunit:Interacts with FLII.,tissue specificity:Ubiquitously expressed.,

Subcellular Location :

Nucleus. Cytoplasm.

Expression :

Ubiquitously expressed.

Sort :

9258

No4 :

1

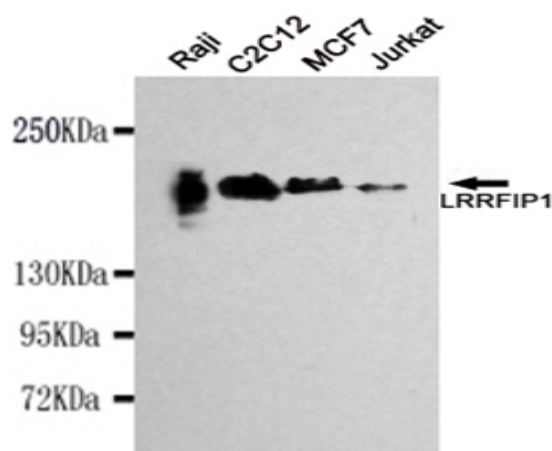
Host :

Mouse

Modifications :

Unmodified

Products Images



Western blot detection of LRRFIP1 in Raji, C2C12, MCF7 and Jurkat cell lysates using LRRFIP1 mouse mAb (1:1000 diluted). Predicted band size: 89KDa. Observed band size: 160KDa.