

Calumenin mouse mAb

Catalog No :	YM1325
Reactivity :	Human;Mouse
Applications :	WB
Target :	Calumenin
Gene Name :	calu
Human Gene Id :	813
Human Swiss Prot No :	O43852
Mouse Swiss Prot No :	O35887
Immunogen :	Purified recombinant human Calumenin protein fragments expressed in E.coli.
Specificity :	This antibody detects endogenous levels of Calumenin and does not cross-react with related proteins.
Formulation :	Liquid in PBS containing 50% glycerol, 0.5% BSA and 0.02% sodium azide.
Source :	Monoclonal, Mouse
Dilution :	wb 1:1000
Purification :	The antibody was affinity-purified from mouse ascites by affinity-chromatography using epitope-specific immunogen.
Concentration :	1 mg/ml
Storage Stability :	-15°C to -25°C/1 year(Do not lower than -25°C)
Observed Band :	37kD
Background :	calumenin(CALU) Homo sapiens The product of this gene is a calcium-binding protein localized in the endoplasmic reticulum (ER) and it is involved in such ER

functions as protein folding and sorting. This protein belongs to a family of multiple EF-hand proteins (CERC) that include reticulocalbin, ERC-55, and Cab45 and the product of this gene. Alternatively spliced transcript variants encoding different isoforms have been identified. [provided by RefSeq, Oct 2008],

Function :

function:Involved in regulation of vitamin K-dependent carboxylation of multiple amino-terminal glutamate residues. Seems to inhibit gamma-carboxylase GGCX. Binds 7 calcium ions with a low affinity.,similarity:Belongs to the CREC family.,similarity:Contains 6 EF-hand domains.,subcellular location:Identified by mass spectrometry in melanosome fractions from stage I to stage IV.,subunit:Interacts with GGCX.,tissue specificity:Ubiquitously expressed. Expressed at high levels in heart, placenta and skeletal muscle, at lower levels in lung, kidney and pancreas and at very low levels in brain and liver.,

Subcellular Location :

Endoplasmic reticulum membrane . Golgi apparatus . Secreted . Melanosome . Sarcoplasmic reticulum lumen . Identified by mass spectrometry in melanosome fractions from stage I to stage IV. .

Expression :

Ubiquitously expressed. Expressed at high levels in heart, placenta and skeletal muscle, at lower levels in lung, kidney and pancreas and at very low levels in brain and liver.

Sort :

3088

No4 :

1

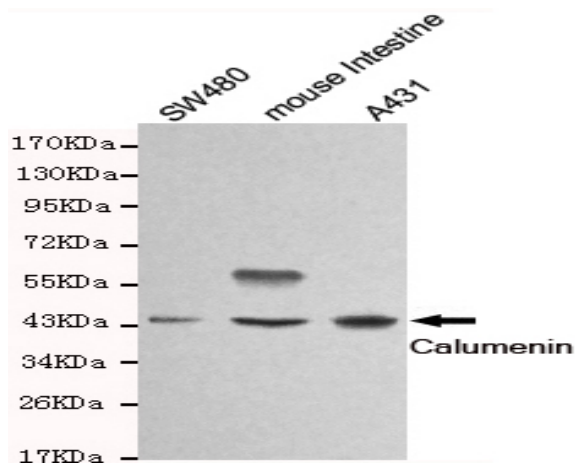
Host :

Mouse

Modifications :

Unmodified

Products Images



Western blot detection of Calumenin in SW480, mouse intestine and A431 cell lysates and using Calumenin mouse mAb (1:1000 diluted). Predicted band size: 37KDa. Observed band size: 45KDa.