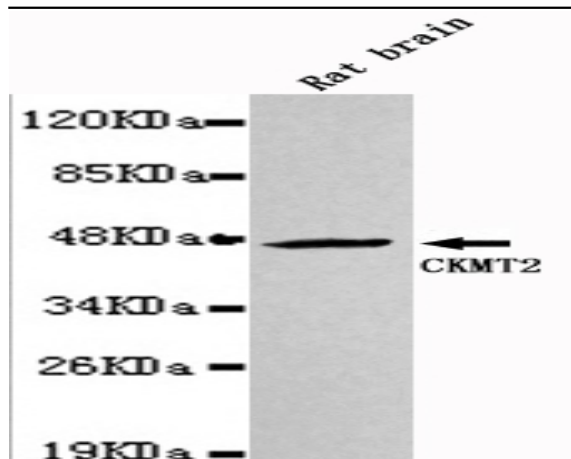


CKMT2 mouse mAb

Catalog No :	YM1333
Reactivity :	Rat
Applications :	WB
Target :	sMtCK
Fields :	>>Arginine and proline metabolism;>>Metabolic pathways
Gene Name :	ckmt2
Human Gene Id :	1160
Human Swiss Prot No :	P17540
Mouse Swiss Prot No :	Q6P8J7
Immunogen :	Purified recombinant human CKMT2 protein fragments expressed in E.coli.
Specificity :	This antibody detects endogenous levels of CKMT2 and does not cross-react with related proteins.
Formulation :	Liquid in PBS containing 50% glycerol, 0.5% BSA and 0.02% sodium azide.
Source :	Monoclonal, Mouse
Dilution :	wb 1:1000
Purification :	The antibody was affinity-purified from mouse ascites by affinity-chromatography using epitope-specific immunogen.
Concentration :	1 mg/ml
Storage Stability :	-15°C to -25°C/1 year(Do not lower than -25°C)
Observed Band :	47kD

Cell Pathway :	Arginine and proline metabolism;
Background :	<p>creatine kinase, mitochondrial 2(CKMT2) Homo sapiens Mitochondrial creatine kinase (MtCK) is responsible for the transfer of high energy phosphate from mitochondria to the cytosolic carrier, creatine. It belongs to the creatine kinase isoenzyme family. It exists as two isoenzymes, sarcomeric MtCK and ubiquitous MtCK, encoded by separate genes. Mitochondrial creatine kinase occurs in two different oligomeric forms: dimers and octamers, in contrast to the exclusively dimeric cytosolic creatine kinase isoenzymes. Sarcomeric mitochondrial creatine kinase has 80% homology with the coding exons of ubiquitous mitochondrial creatine kinase. This gene contains sequences homologous to several motifs that are shared among some nuclear genes encoding mitochondrial proteins and thus may be essential for the coordinated activation of these genes during mitochondrial biogenesis. Three transcript variants encoding the same protein have been found for this gen</p>
Function :	<p>catalytic activity:ATP + creatine = ADP + phosphocreatine.,function:Reversibly catalyzes the transfer of phosphate between ATP and various phosphogens (e.g. creatine phosphate). Creatine kinase isoenzymes play a central role in energy transduction in tissues with large, fluctuating energy demands, such as skeletal muscle, heart, brain and spermatozoa.,miscellaneous:Mitochondrial creatine kinase binds cardiolipin.,similarity:Belongs to the ATP:guanido phosphotransferase family.,subunit:Exists as an octamer composed of four CKMT2 homodimers.,tissue specificity:Sarcomere-specific. Found only in heart and skeletal muscles.,</p>
Subcellular Location :	Mitochondrion inner membrane; Peripheral membrane protein; Intermembrane side.
Expression :	Sarcomere-specific. Found only in heart and skeletal muscles.
Sort :	4059
No4 :	1
Host :	Mouse
Modifications :	Unmodified

Products Images



Western blot detection of CKMT2 in Rat Brain lysates using CKMT2 mouse mAb (1:1000 diluted). Predicted band size: 47KDa. Observed band size: 47KDa.