

Musashi-1 mouse mAb

| | |
|------------------------------|--|
| Catalog No : | YM1336 |
| Reactivity : | Human;Mouse;Rat |
| Applications : | WB |
| Target : | Musashi-1 |
| Fields : | >>mRNA surveillance pathway |
| Gene Name : | msi1 |
| Human Gene Id : | 4440 |
| Human Swiss Prot No : | O43347 |
| Mouse Swiss Prot No : | Q61474 |
| Immunogen : | Purified recombinant human Musashi-1 protein fragments expressed in E.coli. |
| Specificity : | This antibody detects endogenous levels of Musashi-1 and does not cross-react with related proteins. |
| Formulation : | Liquid in PBS containing 50% glycerol, 0.5% BSA and 0.02% sodium azide. |
| Source : | Monoclonal, Mouse |
| Dilution : | wb 1:1000 |
| Purification : | The antibody was affinity-purified from mouse ascites by affinity-chromatography using epitope-specific immunogen. |
| Concentration : | 1 mg/ml |
| Storage Stability : | -15°C to -25°C/1 year(Do not lower than -25°C) |
| Observed Band : | 39kD |

Background : This gene encodes a protein containing two conserved tandem RNA recognition motifs. Similar proteins in other species function as RNA-binding proteins and play central roles in posttranscriptional gene regulation. Expression of this gene has been correlated with the grade of the malignancy and proliferative activity in gliomas and melanomas. A pseudogene for this gene is located on chromosome 11q13. [provided by RefSeq, Jul 2008],

Function : domain:The first RNA recognition motif binds more strongly to RNA compared to the second one.,function:RNA binding protein that regulates the expression of target mRNAs at the translation level. Regulates expression of the NOTCH1 antagonist NUMB. Binds RNA containing the sequence 5'-GUUAGUUAGUUAGUU-3' and other sequences containing the pattern 5'-[GA]U(1-3)AGU-3'. May play a role in the proliferation and maintenance of stem cells in the central nervous system.,similarity:Belongs to the Musashi family.,similarity:Contains 2 RRM (RNA recognition motif) domains.,tissue specificity:Detected in fetal kidney, brain, liver and lung, and in adult brain and pancreas. Detected in hepatoma cell lines.,

Subcellular Location : Cytoplasm . Nucleus .

Expression : Detected in fetal kidney, brain, liver and lung, and in adult brain and pancreas. Detected in hepatoma cell lines.

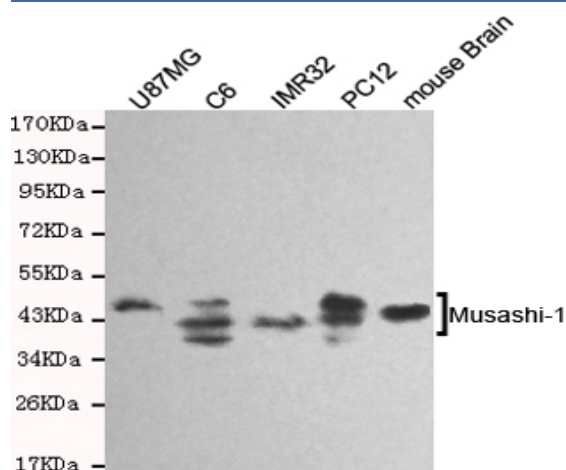
Sort : 10394

No4 : 1

Host : Mouse

Modifications : Unmodified

Products Images



Western blot detection of Musashi-1 in U87MG, C6, IMR32, mouse brain and PC12 cell lysates and using Musashi-1 mouse mAb (1:1000 diluted). Predicted band size: 39 kDa. Observed band size: 39 kDa.