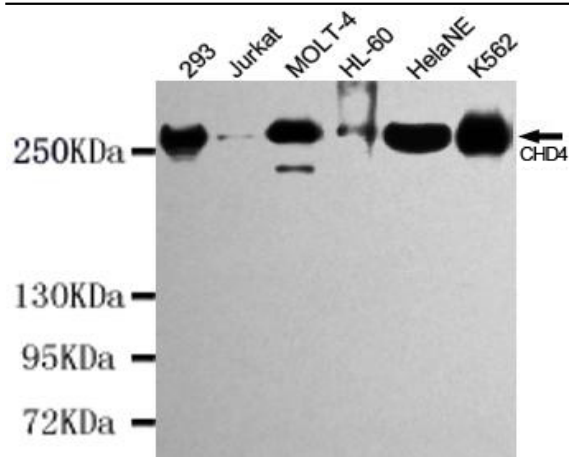


CHD4 mouse mAb

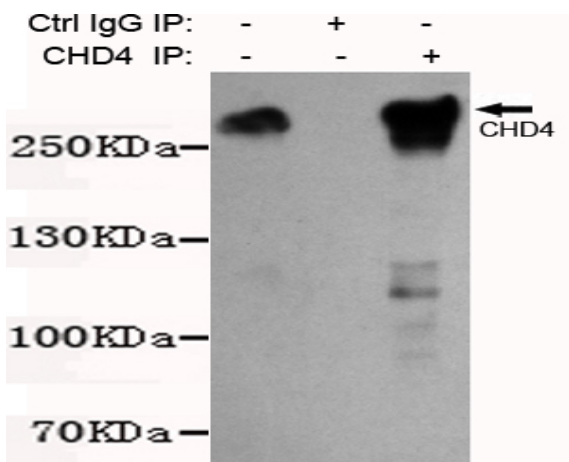
Catalog No :	YM1353
Reactivity :	Human
Applications :	WB;CoIP
Target :	CHD4
Fields :	>>Human papillomavirus infection;>>Viral carcinogenesis
Gene Name :	chd4
Human Gene Id :	1108
Human Swiss Prot No :	Q14839
Mouse Swiss Prot No :	Q6PDQ2
Immunogen :	Purified recombinant human CHD4 protein fragments expressed in E.coli.
Specificity :	This antibody detects endogenous levels of CHD4 and does not cross-react with related proteins.
Formulation :	Liquid in PBS containing 50% glycerol, 0.5% BSA and 0.02% sodium azide.
Source :	Monoclonal, Mouse
Dilution :	wb 1:1000 IP 1:50-200
Purification :	The antibody was affinity-purified from mouse ascites by affinity-chromatography using epitope-specific immunogen.
Concentration :	1 mg/ml
Storage Stability :	-15°C to -25°C/1 year(Do not lower than -25°C)
Observed Band :	260kD

Background :	The product of this gene belongs to the SNF2/RAD54 helicase family. It represents the main component of the nucleosome remodeling and deacetylase complex and plays an important role in epigenetic transcriptional repression. Patients with dermatomyositis develop antibodies against this protein. Somatic mutations in this gene are associated with serous endometrial tumors. Alternative splicing results in multiple transcript variants encoding different isoforms. [provided by RefSeq, Jul 2014],
Function :	disease:One of the main antigens reacting with anti-MI-2 positive sera of dermatomyositis.,function:Probable transcription regulator.,PTM:Phosphorylated upon DNA damage, probably by ATM or ATR.,similarity:Belongs to the SNF2/RAD54 helicase family.,similarity:Contains 1 helicase ATP-binding domain.,similarity:Contains 1 helicase C-terminal domain.,similarity:Contains 2 chromo domains.,similarity:Contains 2 PHD-type zinc fingers.,subunit:Central component of the nucleosome remodeling and histone deacetylase (NuRD) repressor complex. Interacts with TRIM27. Part of a complex containing ATR and HDAC2. Interacts with KLF1; the interaction depends on sumoylation of KLF1, and leads to its transcriptional repression.,
Subcellular Location :	Nucleus . Cytoplasm, cytoskeleton, microtubule organizing center, centrosome . Associates with centrosomes in interphase. .
Expression :	Epithelium,Pancreas,Skin,Uterus,
Tag :	orthogonal,ip
Sort :	3929
No4 :	1
Host :	Mouse
Modifications :	Unmodified

Products Images



Western blot detection of CHD4 in K562, HeLaNE, HL-60, MOLT-4, Jurkat and 293 cell lysates using CHD4 mouse mAb (1:1000 diluted). Predicted band size: 260KDa. Observed band size: 260KDa.



Immunoprecipitation analysis of K562 cell lysates using CHD4 mouse mAb.