

IMP3 (PT0778) mouse mAb

| | |
|------------------------------|--|
| Catalog No : | YM1368 |
| Reactivity : | Human;Mouse; |
| Applications : | IHC;WB;IF;ELISA |
| Target : | IMP3 |
| Gene Name : | igf2bp3 |
| Human Gene Id : | 10643 |
| Human Swiss Prot No : | Q9NV31 |
| Mouse Swiss Prot No : | Q9CPN8 |
| Immunogen : | Synthesized peptide derived from human protein.AA range:171-184 |
| Specificity : | This antibody detects endogenous levels of IMP3 protein. |
| Formulation : | PBS, 50% glycerol, 0.05% Proclin 300, 0.05%BSA |
| Source : | Mouse, Monoclonal/IgG |
| Dilution : | IHC 1:200-1000. WB 1:500-2000. IF 1:100-500. ELISA 1:1000-5000 |
| Purification : | Protein G |
| Concentration : | 1 mg/ml |
| Storage Stability : | -15°C to -25°C/1 year(Do not lower than -25°C) |
| Molecularweight : | 63kD |
| Observed Band : | 63kD |
| Background : | The protein encoded by this gene is primarily found in the nucleolus, where it |

can bind to the 5' UTR of the insulin-like growth factor II leader 3 mRNA and may repress translation of insulin-like growth factor II during late development. The encoded protein contains several KH domains, which are important in RNA binding and are known to be involved in RNA synthesis and metabolism. A pseudogene exists on chromosome 7, and there are putative pseudogenes on other chromosomes. [provided by RefSeq, Jul 2008],

Function :

disease:Autoantibodies against IGF2BP3 are detected in sera from some patients with a variety of carcinomas.,function:RNA-binding protein that act as a regulator of mRNA translation and stability. Binds to the 5'-UTR of the insulin-like growth factor 2 (IGF2) mRNAs. Binds to sequences in the 3'-UTR of CD44 mRNA.,similarity:Belongs to the RRM IMP/VICKZ family.,similarity:Contains 2 RRM (RNA recognition motif) domains.,similarity:Contains 4 KH domains.,subcellular location:Found in lamellipodia of the leading edge, in the perinuclear region, and beneath the plasma membrane. The subcytoplasmic localization is cell specific and regulated by cell contact and growth. Localized at the connecting piece and the tail of the spermatozoa. Colocalized with CD44 mRNA in RNP granules.,subunit:Homodimer and multimer.,tissue specificity:Expressed in fetal liver, fetal lung, fetal kidney, fetal thymus, fe

Subcellular Location :

Cytoplasmic

Expression :

Expressed in fetal liver, fetal lung, fetal kidney, fetal thymus, fetal placenta, fetal follicles of ovary and gonocytes of testis, growing oocytes, spermatogonia and semen (at protein level). Expressed in cervix adenocarcinoma, in testicular, pancreatic and renal-cell carcinomas (at protein level). Expressed ubiquitously during fetal development at 8 and 14 weeks of gestation. Expressed in ovary, testis, brain, placenta, pancreatic cancer tissues and pancreatic cancer cell lines.

Sort :

8555

No4 :

1

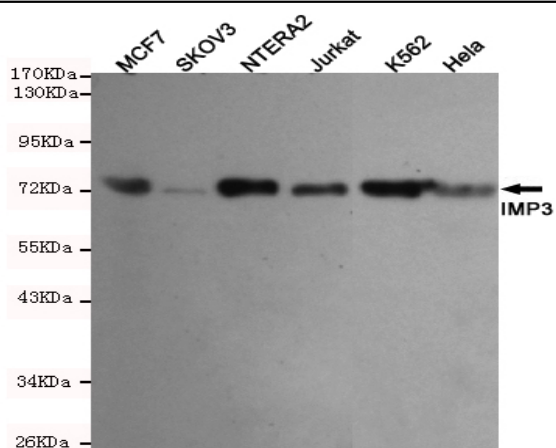
Host :

Mouse

Modifications :

Unmodified

Products Images



Western blot detection of IMP3 in MCF7,SKOV3,NTERA2,Jurkat,HeLa and K562 cell lysates using IMP3 mouse mAb (1:1000 diluted).