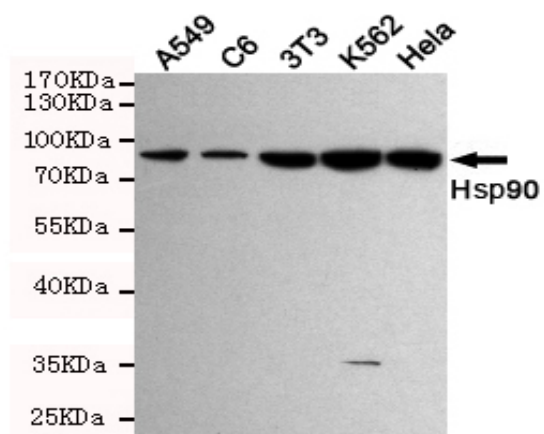


Hsp90 mouse mAb

Catalog No :	YM1398
Reactivity :	Human;Mouse;Rat
Applications :	WB
Target :	HSP 90
Fields :	>>Protein processing in endoplasmic reticulum;>>PI3K-Akt signaling pathway;>>Necroptosis;>>Antigen processing and presentation;>>NOD-like receptor signaling pathway;>>IL-17 signaling pathway;>>Th17 cell differentiation;>>Progesterone-mediated oocyte maturation;>>Estrogen signaling pathway;>>Salmonella infection;>>Pathways in cancer;>>Chemical carcinogenesis - receptor activation;>>Prostate cancer;>>Lipid and atherosclerosis;>>Fluid shear stress and atherosclerosis
Gene Name :	hsp90
Human Gene Id :	3320
Human Swiss Prot No :	P07900
Mouse Swiss Prot No :	P07901
Immunogen :	Purified recombinant human HSP90AA1 protein fragments expressed in E.coli
Specificity :	This antibody detects endogenous levels of Hsp90 alpha and Hsp90 beta.
Formulation :	Liquid in PBS containing 50% glycerol, 0.5% BSA and 0.02% sodium azide.
Source :	Monoclonal, Mouse
Dilution :	wb dilution 1:2000
Purification :	The antibody was affinity-purified from mouse ascites by affinity-chromatography using epitope-specific immunogen.
Concentration :	1 mg/ml

Storage Stability :	<u>-15°C to -25°C/1 year(Do not lower than -25°C)</u>
Observed Band :	<u>90kD</u>
Cell Pathway :	<u>Antigen processing and presentation;NOD-like receptor;Progesterone-mediated oocyte maturation;Pathways in cancer;Prostate cancer;</u>
Background :	<u>The protein encoded by this gene is an inducible molecular chaperone that functions as a homodimer. The encoded protein aids in the proper folding of specific target proteins by use of an ATPase activity that is modulated by co-chaperones. Two transcript variants encoding different isoforms have been found for this gene. [provided by RefSeq, Jan 2012],</u>
Function :	<u>caution:Despite classification as a pseudogene, the existence of this protein is supported by unambiguous mass spectrometry evidence.,function:Molecular chaperone.,function:Molecular chaperone. Has ATPase activity.,similarity:Belongs to the heat shock protein 90 family.,subcellular location:Identified by mass spectrometry in melanosome fractions from stage I to stage IV.,subunit:Homodimer. Interacts with AHSA1, SMYD3 and TOM34. Interacts with FNIP1 and HSF1.,</u>
Subcellular Location :	<u>Nucleus . Cytoplasm . Melanosome . Cell membrane . Mitochondrion . Identified by mass spectrometry in melanosome fractions from stage I to stage IV.</u>
Expression :	<u>Adult brain,Brain,Brain cortex,Breast,Cajal-Retzius</u>
Tag :	<u>orthogonal</u>
Sort :	<u>7933</u>
No4 :	<u>1</u>
Host :	<u>Mouse</u>
Modifications :	<u>Unmodified</u>

Products Images



Western blot detection of Hsp90 in HeLa, 3T3, C6, K562 and A549 cell lysates using Hsp90 mouse mAb (1:2000 diluted). Exposure time: 4min. Predicted band size: 90KDa. Observed band size: 90KDa.