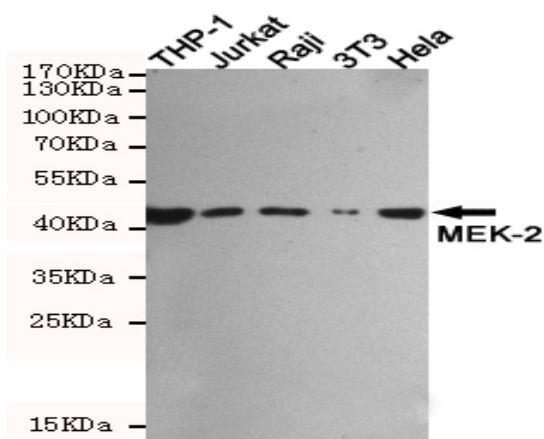


Rabbit IgG mouse mAb

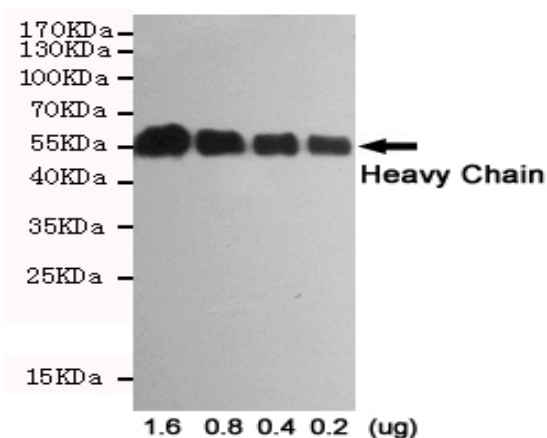
Catalog No :	YM1424
Reactivity :	Rabbit
Applications :	WB;ELISA
Target :	Rabbit IgG
Gene Name :	rabbit igg
Human Gene Id :	
Human Swiss Prot No :	
Immunogen :	Rabbit IgG
Specificity :	This antibody detects rabbit IgG.
Formulation :	Liquid in PBS containing 50% glycerol, 0.5% BSA and 0.02% sodium azide.
Source :	Monoclonal, Mouse
Dilution :	wb dilution 1:50000
Purification :	The antibody was affinity-purified from mouse ascites by affinity-chromatography using epitope-specific immunogen.
Concentration :	1 mg/ml
Storage Stability :	-15°C to -25°C/1 year(Do not lower than -25°C)
Observed Band :	
Tag :	recombinant
Sort :	13725

No4 :	1
Host :	Mouse
Modifications :	Unmodified

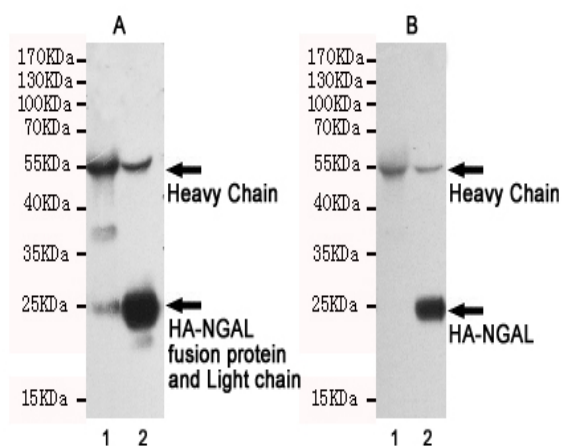
Products Images



Western blot detection of MEK-2 in THP-1, Jurkat, Raji, 3T3 and HeLa cell lysates using 310001 (MEK-2 rabbit pAb, 1:1000 diluted), then incubated with 201069 (Rabbit IgG mAb, 1:50000 diluted). Anti-mouse IgG, HRP-linked Antibody was used for detecting. Predicted band size: 44 kDa. Observed band size: 44 kDa.



Western blot analysis of decreasing concentrations of total rabbit IgG reduced and denatured in 2X SDS loading buffer with DTT using Mouse Anti-Rabbit IgG (Heavy-Chain Specific) mAb (1:1000 diluted).



Immunoprecipitation analysis of CHO-K1 cell lysates transfected with HA-tagged NGAL using HA-Tag Rabbit pAb (390001, 1:1000 diluted) (lane 2). Lane 1 contains rabbit IgG IP control lysate. All lanes are probed with HA-Tag Rabbit pAb (390001, 1:1000 diluted) as the primary antibody. Panel A incubated with secondary antibodies Anti-Rabbit whole IgG, HRP-linked Antibody for detecting. Panel B incubated with Anti-Rabbit IgG (Heavy-Chain Specific) mAb (1:50000 diluted) and the Anti-mouse whole IgG, HRP-linked Antibody was used for detecting.