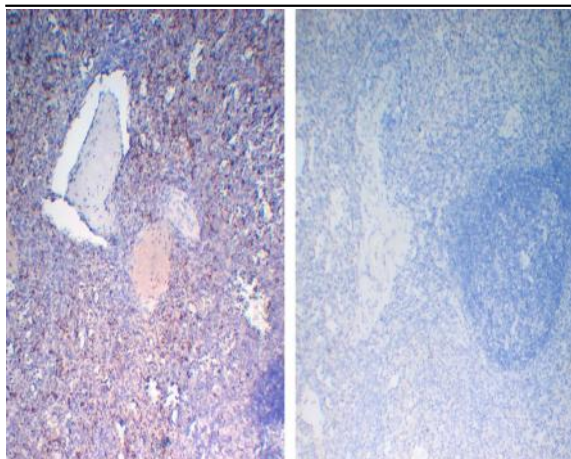


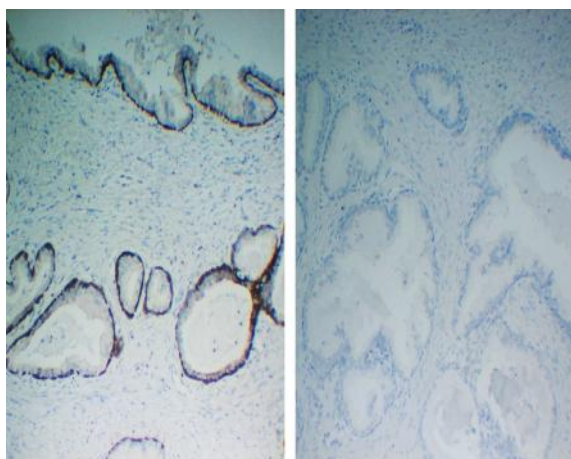
Negative Control for mouse IgG2a, kappa Primary Antibody

Catalog No :	VN0002
Reactivity :	Human;Mouse;Rat;Bovine;Pig;Chick;
Applications :	IHC;IP;IF;ELISA
Human Swiss Prot No :	/
Formulation :	PBS, 50% glycerol, 0.05% Proclin 300, 0.05%BSA
Source :	Mouse, Monoclonal/IgG2a, kappa
Dilution :	IHC 1:200-1000. IF 1:100-500. ELISA 1:1000-5000
Purification :	Protein G
Concentration :	1 mg/ml
Storage Stability :	-15°C to -25°C/1 year(Do not lower than -25°C)
Subcellular Location :	No staining
Sort :	1
No4 :	1
Host :	Mouse
Modifications :	Unmodified

Products Images



Immunohistochemical analysis of paraffin-embedded human spleen tissue using anti-CD42b mouse mAb (left) and mouse IgG2a, kappa monoclonal control (VN002, right).



Immunohistochemical analysis of paraffin-embedded human prostate tissue using anti-Cytokeratin 14 mouse mAb (YM4064, left) and mouse IgG2a, kappa monoclonal control (VN002, right).