

His-tag Polyclonal Antibody

Catalog No :	YG0002
Reactivity :	Species independent
Applications :	WB;ELISA
Target :	His-tag
Gene Name :	His-Tag
Protein Name :	His Tag
Immunogen :	6X His synthetic peptide conjugated to KLH.
Specificity :	His-tag Polyclonal Antibody detects His-tagged recombinant proteins or His-tagged proteins overexpressed in cells.
Formulation :	Liquid in PBS containing 50% glycerol, 0.5% BSA and 0.02% sodium azide.
Source :	Polyclonal, Rabbit,IgG
Dilution :	WB 1:1000 - 1:3000. ELISA: 1:20000. Not yet tested in other applications.
Purification :	The antibody was affinity-purified from rabbit antiserum by affinity-chromatography using epitope-specific immunogen.
Concentration :	1 mg/ml
Storage Stability :	-15°C to -25°C/1 year(Do not lower than -25°C)
Observed Band :	15kD
Background :	The his-tag is a series of six to nine histidine residues generally fused to either the carboxy or amino terminus of a recombinant protein. The small size of the his-tag, compared with other common epitope tags, makes it less likely to obstruct the target protein's structure or function and more suitable to use under denaturing conditions. The string of histidine residues binds to several types of immobilized metal ions, including nickel, cobalt and copper. The binding to metal ions under specific buffer conditions, allows for the simple purification and

detection of his-tagged proteins.

Tag : orthogonal,overexpres

Sort : 1

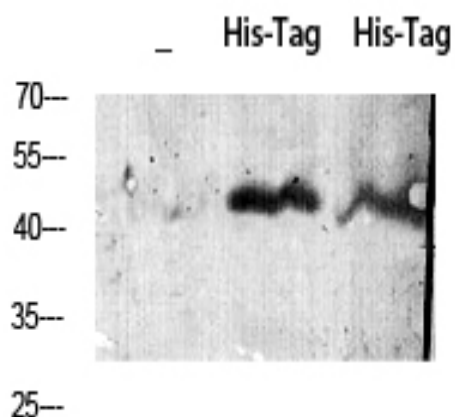
No3 : ab213204

No4 : 1

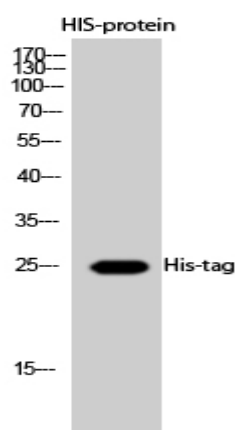
Host : Rabbit

Modifications : Unmodified

Products Images



Western Blot analysis using His-tag Polyclonal Antibody against HEK293 cells transfected with vector overexpressing His tag (1) and untransfected (2). Antibody was diluted at 1:2000. Secondary antibody(catalog#:RS0002) was diluted at 1:20000



Western Blot analysis of HIS-protein cells using His-tag Polyclonal Antibody diluted at 1:2000. Secondary antibody(catalog#:RS0002) was diluted at 1:20000