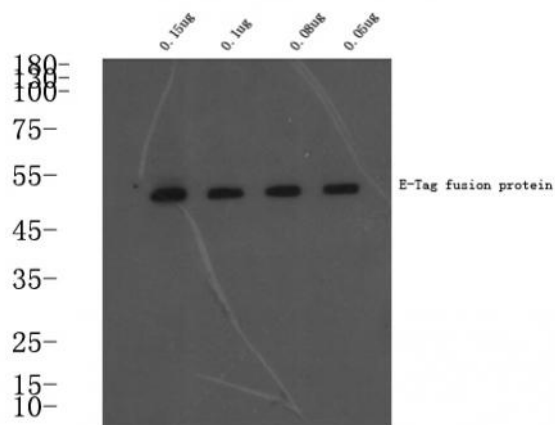


E-Tag Polyclonal Antibody

| | |
|----------------------------|--|
| Catalog No : | YG0006 |
| Reactivity : | Species independent |
| Applications : | WB;ELISA |
| Target : | E-Tag |
| Gene Name : | E Tag |
| Protein Name : | E Tag |
| Immunogen : | Synthetic peptide: GAPVPYPDPLEPR conjugated to KLH. |
| Specificity : | Rabbit polyclonal to E tag |
| Formulation : | Liquid in PBS containing 50% glycerol, and 0.02% sodium azide. |
| Source : | Polyclonal, Rabbit,IgG |
| Dilution : | WB 1:1000-5000, ELISA(peptide)1:5000-20000 |
| Purification : | The antibody was affinity-purified from mouse ascites by affinity-chromatography using specific immunogen. |
| Concentration : | 1 mg/ml |
| Storage Stability : | -15°C to -25°C/1 year(Do not lower than -25°C) |
| Tag : | hot,overexpression |
| Sort : | 5777 |
| No4 : | 1 |
| Host : | Rabbit |

Modifications : Unmodified

Products Images



Western blot analysis of E-Tag fusion protein at 0.05-0.15ug, 4° over night, secondary antibody(cat: RS0002 was diluted at 1:10000, 37° 1 hour.