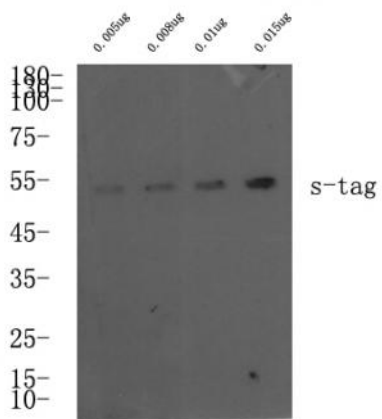


S-Tag Polyclonal Antibody

Catalog No :	YG0007
Reactivity :	Species independent
Applications :	WB;ELISA
Target :	S-Tag
Gene Name :	S Tag
Protein Name :	S Tag
Immunogen :	Synthetic peptide within S tag.
Specificity :	Rabbit polyclonal to S tag
Formulation :	Liquid in PBS containing 50% glycerol, and 0.02% sodium azide.
Source :	Polyclonal, Rabbit,IgG
Dilution :	WB 1:1000-5000, ELISA(peptide)1:5000-20000
Purification :	The antibody was affinity-purified from mouse ascites by affinity-chromatography using specific immunogen.
Concentration :	1 mg/ml
Storage Stability :	-15°C to -25°C/1 year(Do not lower than -25°C)
Tag :	hot,overexpression
Sort :	16652
No4 :	1
Host :	Rabbit

Modifications : Unmodified

Products Images



Western blot analysis of S-Tag fusion protein at 0.05-0.15ug, 4° over night, secondary antibody(cat: RS0002 was diluted at 1:10000, 37° 1 hour.