

Her-2 (ABT077) IHC kit

Catalog No :	IHCM6883
Reactivity :	Human;
Applications :	IHC
Target :	HER2
Fields :	>>EGFR tyrosine kinase inhibitor resistance;>>Endocrine resistance;>>Platinum drug resistance;>>MAPK signaling pathway;>>ErbB signaling pathway;>>Calcium signaling pathway;>>HIF-1 signaling pathway;>>PI3K-Akt signaling pathway;>>Focal adhesion;>>Adherens junction;>>Tight junction;>>Pathways in cancer;>>Proteoglycans in cancer;>>MicroRNAs in cancer;>>Pancreatic cancer;>>Endometrial cancer;>>Prostate cancer;>>Bladder cancer;>>Non-small cell lung cancer;>>Breast cancer;>>Gastric cancer;>>Central carbon metabolism in cancer
Gene Name :	ERBB2 HER2 MLN19 NEU NGL
Protein Name :	Her-2
Human Gene Id :	2064
Human Swiss Prot No :	P04626
Immunogen :	Synthesized peptide derived from human Her-2 AA range: 300-400
Specificity :	The antibody can specifically recognize human Her-2 protein.
Source :	Mouse, Monoclonal/IgG2a, kappa
Purification :	The antibody was affinity-purified from ascites by affinity-chromatography using specific immunogen.
Storage Stability :	2°C to 8°C/1 year
Background :	This gene encodes a member of the epidermal growth factor (EGF) receptor family of receptor tyrosine kinases. This protein has no ligand binding domain of

its own and therefore cannot bind growth factors. However, it does bind tightly to other ligand-bound EGF receptor family members to form a heterodimer, stabilizing ligand binding and enhancing kinase-mediated activation of downstream signalling pathways, such as those involving mitogen-activated protein kinase and phosphatidylinositol-3 kinase. Allelic variations at amino acid positions 654 and 655 of isoform a (positions 624 and 625 of isoform b) have been reported, with the most common allele, Ile654/Ile655, shown here. Amplification and/or overexpression of this gene has been reported in numerous cancers, including breast and ovarian tumors. Alternative splicing results in several additional transcript variants, some encoding d

Function :

catalytic activity:ATP + a [protein]-L-tyrosine = ADP + a [protein]-L-tyrosine phosphate.,disease:Defects in ERBB2 are associated with familial glioma of brain [MIM:137800]; also called glioblastoma multiforme. Gliomas are central nervous system neoplasms derived from glial cells and comprise astrocytomas, glioblastoma multiforme, oligodendrogliomas, and ependymomas.,disease:Defects in ERBB2 are associated with gastric cancer [MIM:137215]; also known as hereditary familial diffuse gastric cancer (HDGC).,disease:Defects in ERBB2 are associated with lung cancer [MIM:211980]; also called adenocarcinoma of lung.,disease:Defects in ERBB2 are associated with ovarian cancer [MIM:167000]. Ovarian cancer is the leading cause of death from gynecologic malignancy. It is characterized by advanced presentation with loco-regional dissemination in the peritoneal cavity and the rare incidence of viscera

Subcellular Location :

Membranous

Expression :

Expressed in a variety of tumor tissues including primary breast tumors and tumors from small bowel, esophagus, kidney and mouth.

Tag :

hot

Sort :

24935

Speciality :

IHC antibodies

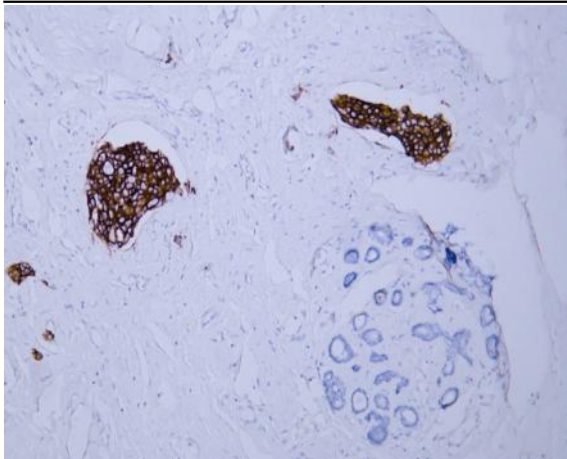
Host :

Mouse

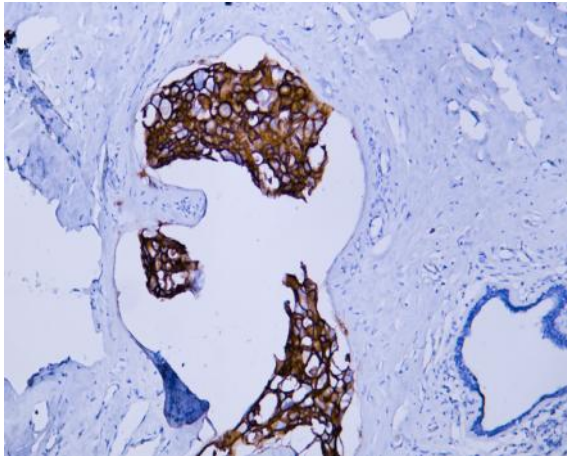
Modifications :

Unmodified

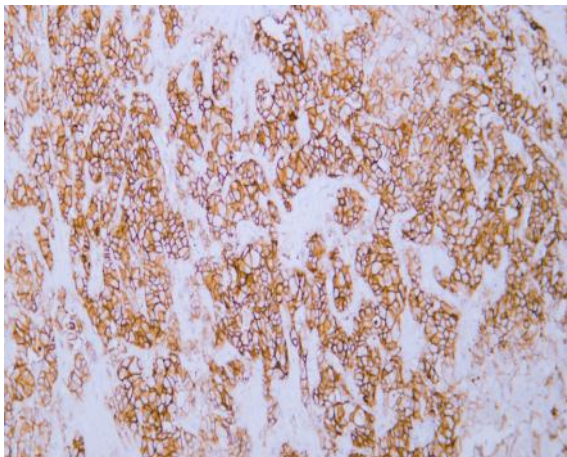
Products Images



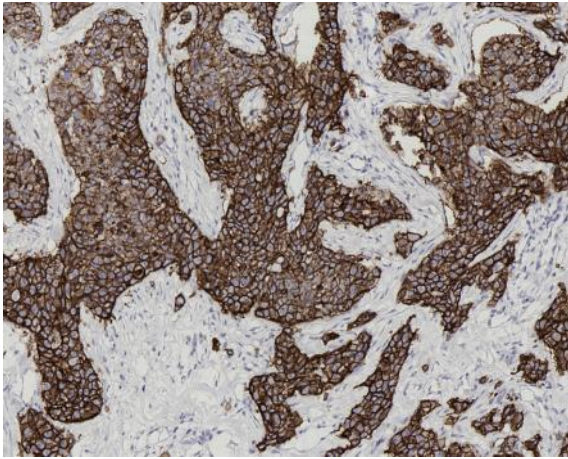
Human breast carcinoma tissue was stained with Anti-Her-2 (ABT077) Antibody



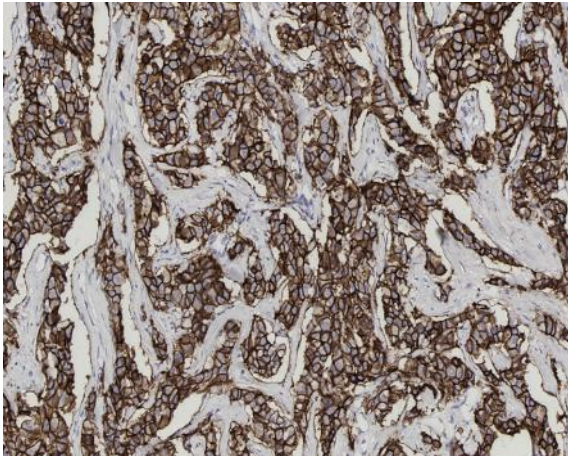
Human breast carcinoma tissue was stained with Anti-Her-2 (ABT077) Antibody



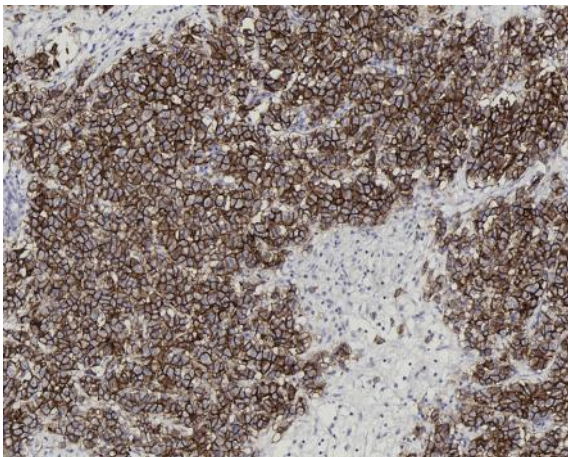
Human metastatic hepatocellular carcinoma of the breast tissue was stained with Anti-Her-2 (ABT077) Antibody



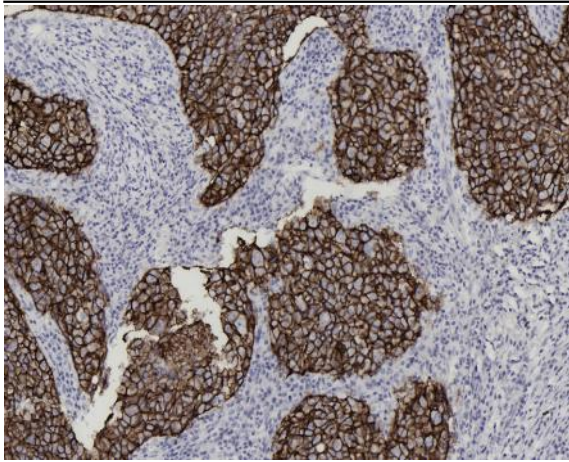
Human invasive ductal carcinoma was stained with Anti-Her-2 (ABT077) Antibody



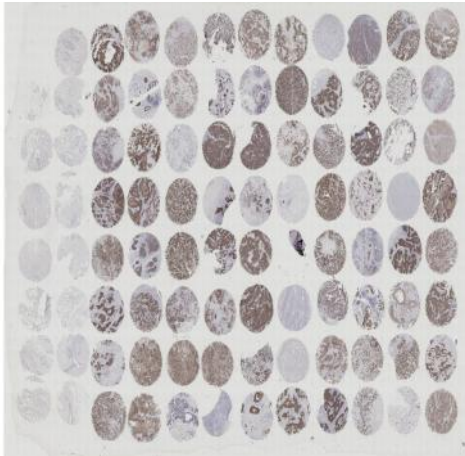
Human invasive ductal carcinoma was stained with Anti-Her-2 (ABT077) Antibody



Human invasive ductal carcinoma was stained with Anti-Her-2 (ABT077) Antibody



Human invasive ductal carcinoma was stained with Anti-Her-2 (ABT077) Antibody



Human breast carcinoma core array tissue was stained with Anti-Her-2 (ABT077) Antibody