

Nucleophosmin (ABT210) IHC kit

Catalog No :	IHCM6898
Reactivity :	Human;
Applications :	IHC
Target :	Nucleophosmin
Gene Name :	NPM1 NPM
Protein Name :	Nucleophosmin
Human Gene Id :	4869
Human Swiss Prot No :	P06748
Immunogen :	Synthesized peptide derived from human Nucleophosmin AA range: 100-200
Specificity :	The antibody can specifically recognize human Nucleophosmin protein.
Source :	Mouse, Monoclonal/IgG2b, kappa
Purification :	The antibody was affinity-purified from ascites by affinity-chromatography using specific immunogen.
Storage Stability :	2°C to 8°C/1 year
Background :	This gene encodes a phosphoprotein which moves between the nucleus and the cytoplasm. The gene product is thought to be involved in several processes including regulation of the ARF/p53 pathway. A number of genes are fusion partners have been characterized, in particular the anaplastic lymphoma kinase gene on chromosome 2. Mutations in this gene are associated with acute myeloid leukemia. More than a dozen pseudogenes of this gene have been identified. Alternative splicing results in multiple transcript variants.[provided by RefSeq, Nov 2009],
Function :	disease:A chromosomal aberration involving NPM1 is a cause of myelodysplastic syndrome (MDS). Translocation t(3;5)(q25.1;q34) with MLF1.,disease:A chromosomal aberration involving NPM1 is found in a form of

acute promyelocytic leukemia. Translocation t(5;17)(q32;q11) with RARA.,disease:A chromosomal aberration involving NPM1 is found in a form of non-Hodgkin lymphoma. Translocation t(2;5)(p23;q35) with ALK. The resulting chimeric NPM1-ALK protein homodimerize and the kinase becomes constitutively activated.,disease:Defects in NPM1 are associated with acute myelogenous leukemia (AML). Mutations in exon 12 affecting the C-terminus of the protein are associated with an aberrant cytoplasmic location.,function:Involved in diverse cellular processes such as ribosome biogenesis, centrosome duplication, protein chaperoning, histone assembly, cell proliferation, and regulation of tumor suppressor

Subcellular Location : Nuclear, Cytoplasmic

Expression : Nuclear, Cytoplasmic

Tag : hot

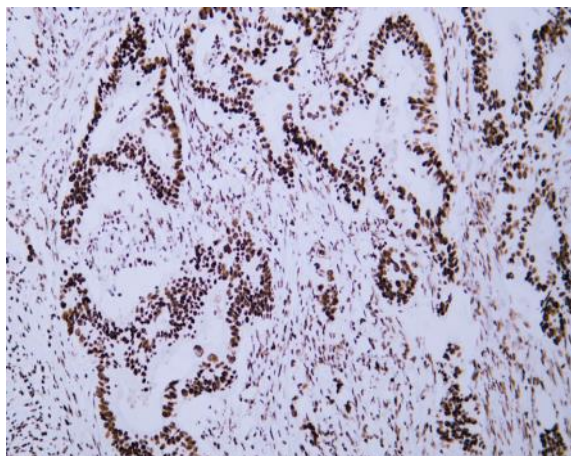
Sort : 800

Speciality : IHC antibodies

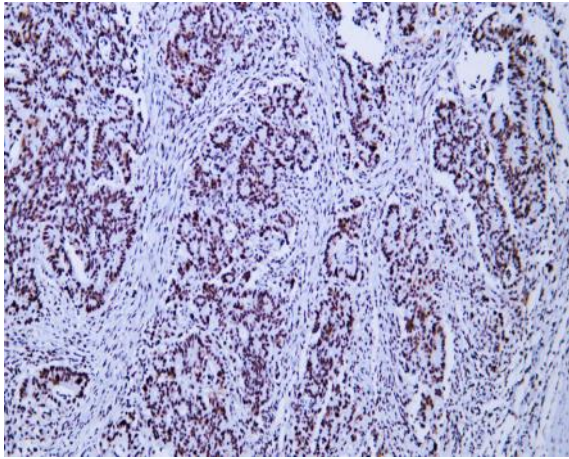
Host : Mouse

Modifications : Unmodified

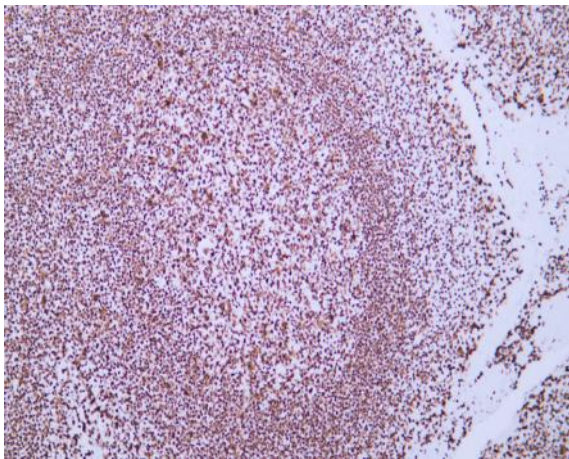
Products Images



Human colon carcinoma tissue was stained with Anti-Nucleophosmin (ABT210) Antibody



Human colon carcinoma tissue was stained with Anti-Nucleophosmin (ABT210) Antibody



Human tonsil tissue was stained with Anti-Nucleophosmin (ABT210) Antibody