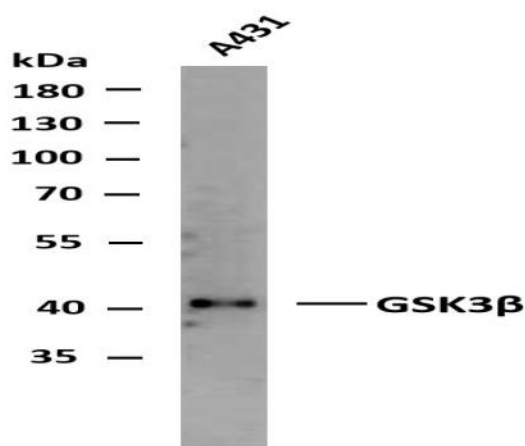


RRAD (PTR2260) mouse mAb

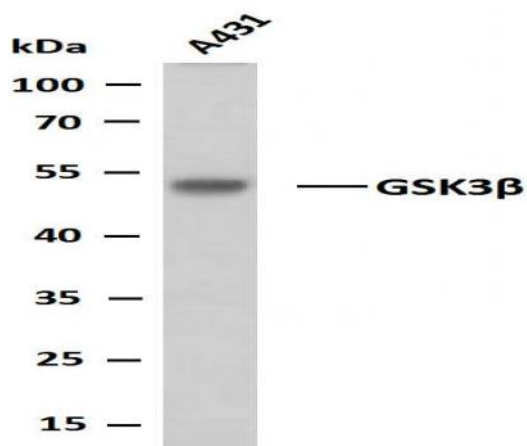
Catalog No :	YM4693
Reactivity :	Human;
Applications :	WB;IF;ELISA
Target :	RRAD
Gene Name :	RRAD RAD
Protein Name :	GTP-binding protein RAD (RAD1) (Ras associated with diabetes)
Human Gene Id :	6236
Human Swiss Prot No :	P55042
Mouse Swiss Prot No :	O88667
Immunogen :	Synthesized peptide derived from human protein. AA range: 1-100
Specificity :	This antibody detects endogenous levels of RRAD protein.
Formulation :	PBS, 50% glycerol, 0.05% Proclin 300, 0.05%BSA
Source :	Mouse, Monoclonal/IgG1, kappa
Dilution :	WB 1:500-2000. IF 1:100-500. ELISA 1:1000-5000
Purification :	Protein G
Concentration :	1 mg/ml
Storage Stability :	-15°C to -25°C/1 year(Do not lower than -25°C)
Molecularweight :	33kD
Observed Band :	33kD

Function :	May play an important role in cardiac antiarrhythmia via the strong suppression of voltage-gated L-type Ca(2+) currents. Regulates voltage-dependent L-type calcium channel subunit alpha-1C trafficking to the cell membrane (By similarity). Inhibits cardiac hypertrophy through the calmodulin-dependent kinase II (CaMKII) pathway. Inhibits phosphorylation and activation of CAMK2D.
Subcellular Location :	Membranous
Expression :	Most abundantly expressed in the heart. Also found in the skeletal muscle and lung. Lesser amounts in placenta and kidney. Also detected in adipose tissue. Overexpressed in muscle of type II diabetic humans.
Sort :	1
No4 :	1
Host :	Mouse
Modifications :	Unmodified

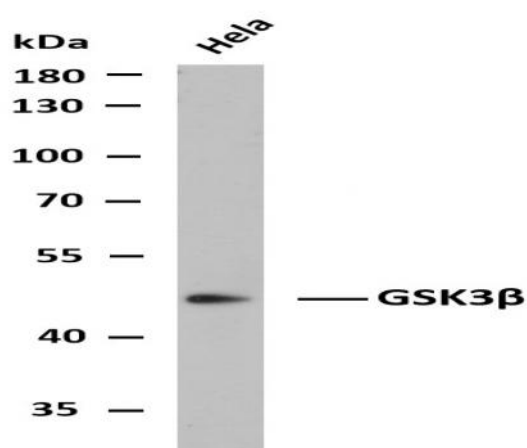
Products Images



Whole cell lysates of A431 were separated by 10% SDS-PAGE, and the membrane was blotted with anti-GSK3β(PTR2553) antibody. The HRP-conjugated Goat anti-Mouse IgG(H + L) antibody was used to detect the antibody. Lane 1: A431



Whole cell lysates of A431 were separated by 10% SDS-PAGE, and the membrane was blotted with anti-GSK3 β (PTR2553) antibody. The HRP-conjugated Goat anti-Mouse IgG(H + L) antibody was used to detect the antibody. Lane 1: A431



Whole cell lysates of HeLa were separated by 10% SDS-PAGE, and the membrane was blotted with anti-GSK3 β (PTR2553) antibody. The HRP-conjugated Goat anti-Mouse IgG(H + L) antibody was used to detect the antibody. Lane 1: HeLa