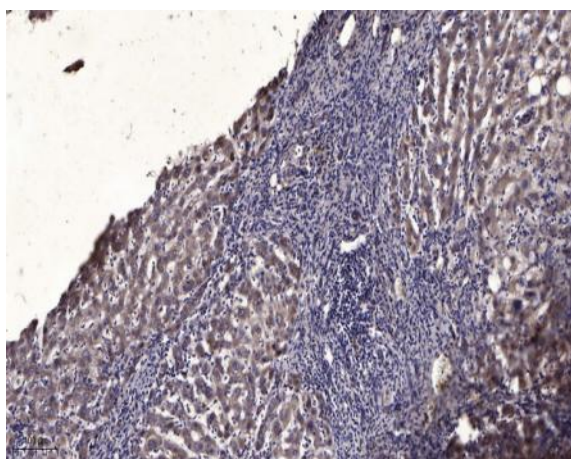


CCD23 rabbit pAb

Catalog No :	YN3771
Reactivity :	Human;Mouse;Rat
Applications :	IHC;IF
Target :	CCD23
Gene Name :	CCDC23
Protein Name :	CCD23
Human Gene Id :	374969
Human Swiss Prot No :	Q8N300
Mouse Gene Id :	69216
Mouse Swiss Prot No :	Q99LQ4
Rat Gene Id :	362578
Rat Swiss Prot No :	Q4KLG3
Immunogen :	Synthesized peptide derived from human CCD23 AA range: 13-63
Specificity :	This antibody detects endogenous levels of CCD23 at Human/Mouse/Rat
Formulation :	Liquid in PBS containing 50% glycerol, 0.5% BSA and 0.02% sodium azide.
Source :	Polyclonal, Rabbit,IgG
Dilution :	IHC 1:50-200. IF 1:50-200
Purification :	The antibody was affinity-purified from rabbit antiserum by affinity-chromatography using epitope-specific immunogen.

Concentration :	1 mg/ml
Storage Stability :	-15°C to -25°C/1 year(Do not lower than -25°C)
Molecularweight :	7kD
Function :	similarity:Belongs to the CCDC23 family.,
Subcellular Location :	Cytoplasm . Secreted . Cytoplasm, cytoskeleton . Detected both intracellularly and extracellularly (By similarity). Within cells, localizes mainly to the apical part of the cell (By similarity). .
Sort :	18272
No4 :	1
Host :	Rabbit
Modifications :	Unmodified

Products Images



Immunohistochemical analysis of paraffin-embedded human liver cancer. 1, Antibody was diluted at 1:200(4° overnight). 2, Tris-EDTA,pH9.0 was used for antigen retrieval. 3,Secondary antibody was diluted at 1:200(room temperature, 45min).