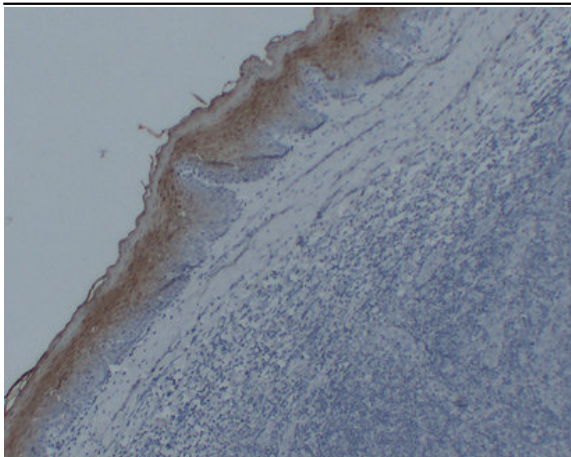


Annexin A1 (PT1761) mouse mAb (Ready to Use)

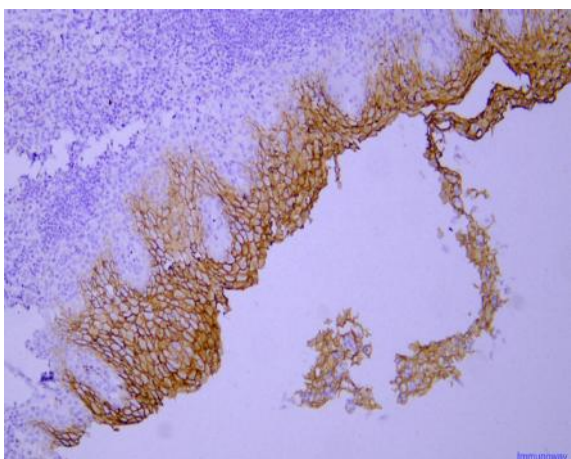
Catalog No :	YM6608R
Reactivity :	Human;Mouse;Rat;
Applications :	IHC
Target :	Annexin I
Gene Name :	ANXA1 ANX1 LPC1
Protein Name :	Annexin A1 (Annexin I) (Annexin-1) (Calpactin II) (Calpactin-2) (Chromobindin-9) (Lipocortin I) (Phospholipase A2 inhibitory protein) (p35)
Human Gene Id :	301
Human Swiss Prot No :	P04083
Immunogen :	Synthesized peptide derived from human Annexin A1 AA range: 250-346
Specificity :	This antibody detects endogenous levels of Annexin A1 protein.
Formulation :	The prediluted ready-to-use antibody is diluted in phosphate buffer saline containing stabilizing protein and 0.05% Proclin 300
Source :	Mouse, Monoclonal/IgG1, kappa
Dilution :	Ready to use for IHC
Purification :	The antibody was affinity-purified from ascites by affinity-chromatography using specific immunogen.
Storage Stability :	2°C to 8°C/1 year
Background :	This gene encodes a membrane-localized protein that binds phospholipids. This protein inhibits phospholipase A2 and has anti-inflammatory activity. Loss of function or expression of this gene has been detected in multiple tumors. [provided by RefSeq, Dec 2014],

Function :	domain:A pair of annexin repeats may form one binding site for calcium and phospholipid.,function:Calcium/phospholipid-binding protein which promotes membrane fusion and is involved in exocytosis. This protein regulates phospholipase A2 activity. It seems to bind from two to four calcium ions with high affinity.,PTM:Phosphorylated by protein kinase C, epidermal growth factor receptor/kinase and TRPM7. Phosphorylation results in loss of the inhibitory activity.,similarity:Belongs to the annexin family.,similarity:Contains 1 annexin repeat.,similarity:Contains 2 annexin repeats.,similarity:Contains 4 annexin repeats.,subcellular location:Found in the cilium, nucleus and basolateral cell membrane of ciliated cells in the tracheal endothelium (By similarity). Found in the cytoplasm of type II pneumocytes and alveolar macrophages.,subunit:Homodimer in placenta (20%); linked by transglutamylat
Subcellular Location :	Cytoplasmic, Nuclear
Expression :	Detected in resting neutrophils (PubMed:10772777). Detected in peripheral blood T-cells (PubMed:17008549). Detected in extracellular vesicles in blood serum from patients with inflammatory bowel disease, but not in serum from healthy donors (PubMed:25664854). Detected in placenta (at protein level) (PubMed:2532504). Detected in liver.
Tag :	hot
Sort :	2044
No4 :	1
Speciality :	IHC antibodies
Host :	Mouse
Modifications :	Unmodified

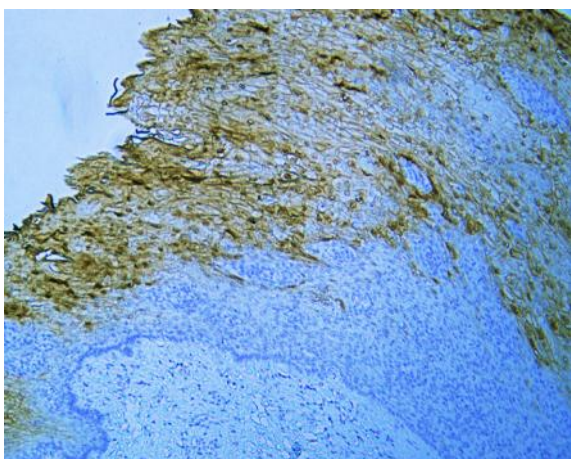
Products Images



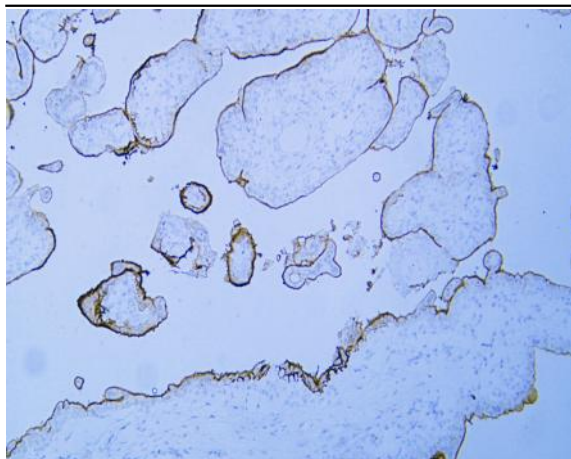
Immunohistochemical analysis of paraffin-embedded Tonsil. 1, Antibody was diluted at 1:200(4° overnight). 2, TRIS-EDTA of pH8.0 was used for antigen retrieval. 3,Secondary antibody was diluted at 1:200(room temperature, 30min).



Immunohistochemical analysis of paraffin-embedded human tonsil Antibody was diluted at 1:200(4° overnight).



Human esophagus tissue was stained with Anti-Annexin A1 (PT1761) Antibody



Human placenta tissue was stained with Anti-Annexin A1 (PT1761) Antibody