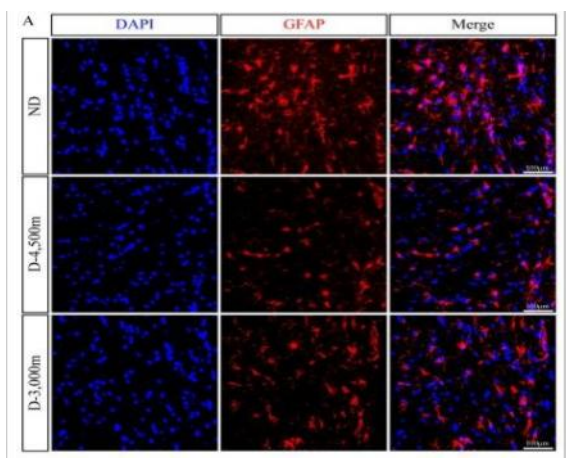


GFAP Monoclonal Antibody(5C8)

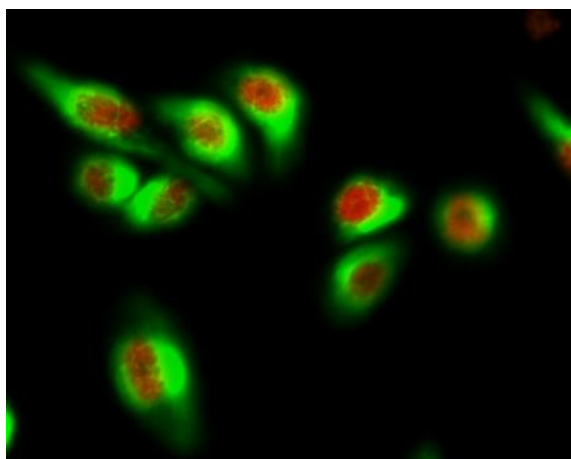
Catalog No :	YM3059
Reactivity :	Human;Rat;Mouse
Applications :	WB;IHC;IF;
Target :	GFAP
Fields :	>>JAK-STAT signaling pathway
Gene Name :	GFAP
Protein Name :	Glial fibrillary acidic protein
Human Gene Id :	2670
Human Swiss Prot No :	P14136
Mouse Gene Id :	14580
Mouse Swiss Prot No :	P03995
Rat Gene Id :	24387
Rat Swiss Prot No :	P47819
Immunogen :	Synthetic Peptide of GFAP
Specificity :	The antibody detects endogenous GFAP proteins.
Formulation :	PBS, pH 7.4, containing 0.5%BSA, 0.02% sodium azide as Preservative and 50% Glycerol.
Source :	Monoclonal, Mouse
Dilution :	WB 1:2000-5000 IF 1:200 IHC 1:50-300

Purification :	The antibody was affinity-purified from mouse ascites by affinity-chromatography using specific immunogen.
Storage Stability :	-15°C to -25°C/1 year(Do not lower than -25°C)
Observed Band :	45kD
Background :	This gene encodes one of the major intermediate filament proteins of mature astrocytes. It is used as a marker to distinguish astrocytes from other glial cells during development. Mutations in this gene cause Alexander disease, a rare disorder of astrocytes in the central nervous system. Alternative splicing results in multiple transcript variants encoding distinct isoforms. [provided by RefSeq, Oct 2008],
Function :	alternative products:Isoforms differ in the C-terminal region which is encoded by alternative exons,disease:Defects in GFAP are a cause of Alexander disease (ALEXD) [MIM:203450]. Alexander disease is a rare disorder of the central nervous system. It is a progressive leukoencephalopathy whose hallmark is the widespread accumulation of Rosenthal fibers which are cytoplasmic inclusions in astrocytes. The most common form affects infants and young children, and is characterized by progressive failure of central myelination, usually leading to death usually within the first decade. Infants with Alexander disease develop a leukoencephalopathy with macrocephaly, seizures, and psychomotor retardation. Patients with juvenile or adult forms typically experience ataxia, bulbar signs and spasticity, and a more slowly progressive course.,function:GFAP, a class-III intermediate filament, is a cell-spe
Subcellular Location :	Cytoplasm . Associated with intermediate filaments. .
Expression :	Expressed in cells lacking fibronectin.
Tag :	orthogonal,hot
Sort :	1
No1 :	ab7260
No3 :	ab7260
No4 :	1
Host :	Mouse
Modifications :	Unmodified

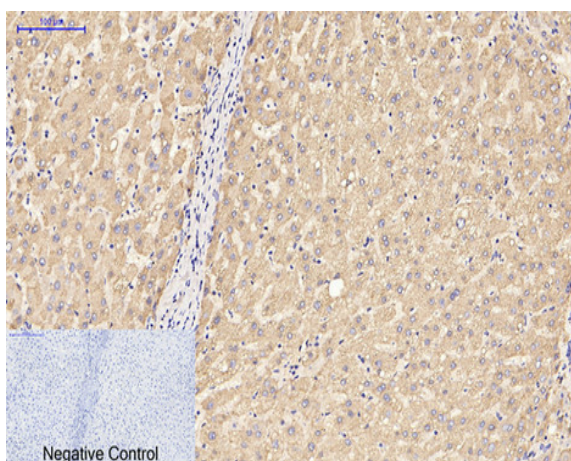
Products Images



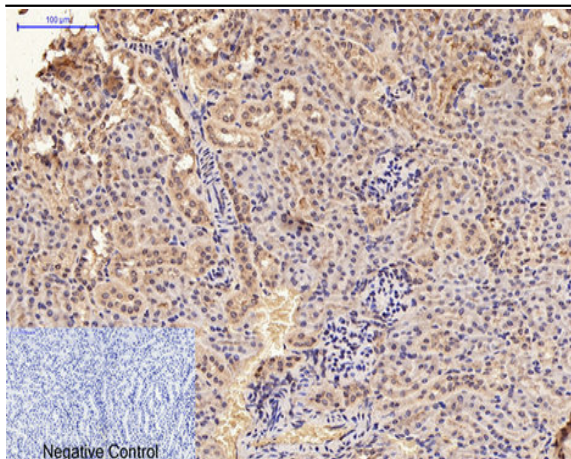
Wang, Hao, et al. "Effects of altitude changes on mild-to-moderate closed-head injury in rats following acute high-altitude exposure." *Experimental and therapeutic medicine* 17.1 (2019): 847-856.



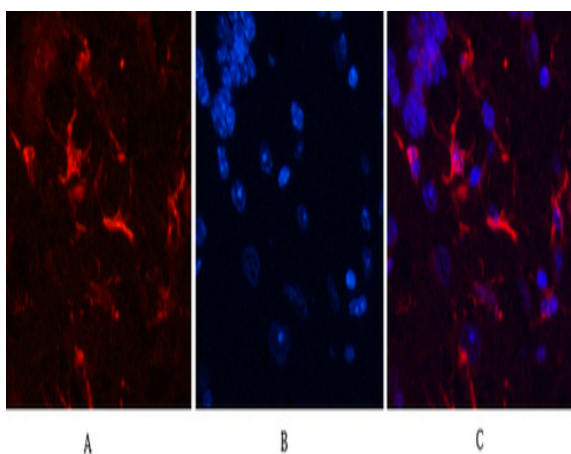
Immunofluorescence analysis of HeLa cell. 1, AR Polyclonal Antibody (red) was diluted at 1:200 (4° overnight). GFAP Monoclonal Antibody (5C8) (green) was diluted at 1:200 (4° overnight). 2, Goat Anti Rabbit Alexa Fluor 594 Catalog: RS3611 was diluted at 1:1000 (room temperature, 50min). Goat Anti Mouse Alexa Fluor 488 Catalog: RS3208 was diluted at 1:1000 (room temperature, 50min).



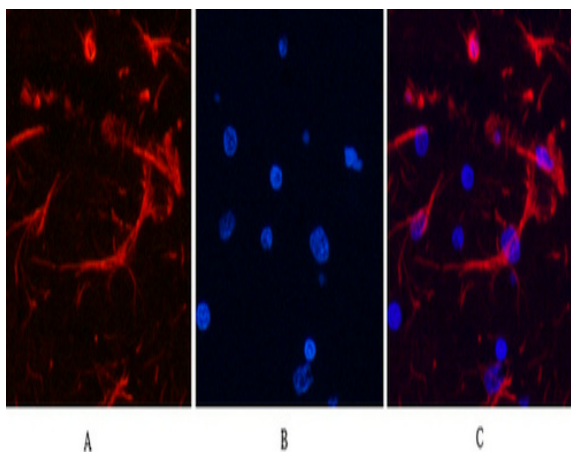
Immunohistochemical analysis of paraffin-embedded Human-liver tissue. 1, GFAP Monoclonal Antibody (5C8) was diluted at 1:200 (4°C, overnight). 2, Sodium citrate pH 6.0 was used for antibody retrieval (>98°C, 20min). 3, Secondary antibody was diluted at 1:200 (room temperature, 30min). Negative control was used by secondary antibody only.



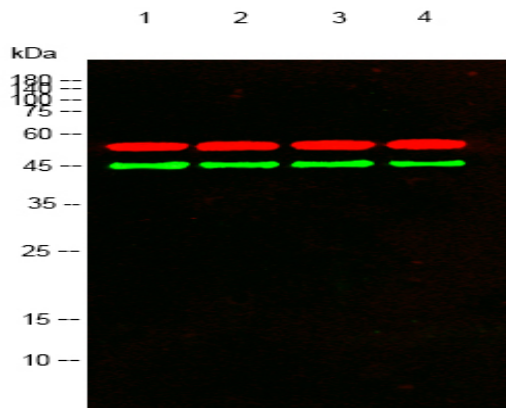
Immunohistochemical analysis of paraffin-embedded Mouse-kidney tissue. 1,GFAP Monoclonal Antibody(5C8) was diluted at 1:200(4°C,overnight). 2, Sodium citrate pH 6.0 was used for antibody retrieval(>98°C,20min). 3,Secondary antibody was diluted at 1:200(room temperature, 30min). Negative control was used by secondary antibody only.



Immunofluorescence analysis of Mouse-brain tissue. 1,GFAP Monoclonal Antibody(5C8)(red) was diluted at 1:200(4°C,overnight). 2, Cy3 labeled Secondary antibody was diluted at 1:300(room temperature, 50min).3, Picture B: DAPI(blue) 10min. Picture A:Target. Picture B: DAPI. Picture C: merge of A+B



Immunofluorescence analysis of Rat-brain tissue. 1,GFAP Monoclonal Antibody(5C8)(red) was diluted at 1:200(4°C,overnight). 2, Cy3 labeled Secondary antibody was diluted at 1:300(room temperature, 50min).3, Picture B: DAPI(blue) 10min. Picture A:Target. Picture B: DAPI. Picture C: merge of A+B



Western blot analysis of lysates from 1) Rat Brain Tissue, 2) HeLa, 3) A431, 4) PC12 cells, (Green) primary antibody was diluted at 1:1000, 4° over night, secondary antibody (cat:RS23910) was diluted at 1:10000, 37° 1 hour. (Red) Tubulin β Polyclonal Antibody (cat:YT4780) antibody was diluted at 1:5000 as loading control, 4° over night, secondary antibody (cat:RS23720) was diluted at 1:10000, 37° 1 hour.