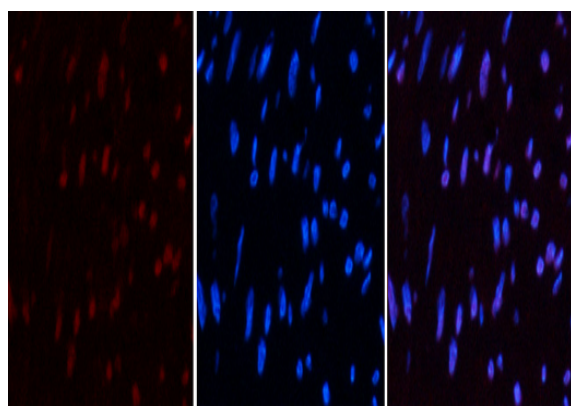


**CD10 Monoclonal Antibody(5B8)**

<b>Catalog No :</b>	YM3072
<b>Reactivity :</b>	Human;Mouse;Rat
<b>Applications :</b>	IF;IHC
<b>Target :</b>	CD10
<b>Fields :</b>	>>Renin-angiotensin system;>>Hematopoietic cell lineage;>>Protein digestion and absorption;>>Alzheimer disease
<b>Gene Name :</b>	MME
<b>Protein Name :</b>	Neprilysin
<b>Human Gene Id :</b>	4311
<b>Human Swiss Prot No :</b>	P08473
<b>Mouse Gene Id :</b>	17380
<b>Mouse Swiss Prot No :</b>	Q61391
<b>Rat Gene Id :</b>	24590
<b>Rat Swiss Prot No :</b>	P07861
<b>Immunogen :</b>	Synthetic Peptide of CD10
<b>Specificity :</b>	The antibody detects endogenous CD10 proteins.
<b>Formulation :</b>	PBS, pH 7.4, containing 0.5%BSA, 0.02% sodium azide as Preservative and 50% Glycerol.
<b>Source :</b>	Monoclonal, Mouse
<b>Dilution :</b>	IF 1:50-200. IHC 1:50-200

<b>Purification :</b>	The antibody was affinity-purified from mouse ascites by affinity-chromatography using specific immunogen.
<b>Storage Stability :</b>	-15°C to -25°C/1 year(Do not lower than -25°C)
<b>Molecularweight :</b>	86kD
<b>Cell Pathway :</b>	Renin-angiotensin system;Hematopoietic cell lineage;Alzheimer's disease;
<b>Background :</b>	This gene encodes a common acute lymphocytic leukemia antigen that is an important cell surface marker in the diagnosis of human acute lymphocytic leukemia (ALL). This protein is present on leukemic cells of pre-B phenotype, which represent 85% of cases of ALL. This protein is not restricted to leukemic cells, however, and is found on a variety of normal tissues. It is a glycoprotein that is particularly abundant in kidney, where it is present on the brush border of proximal tubules and on glomerular epithelium. The protein is a neutral endopeptidase that cleaves peptides at the amino side of hydrophobic residues and inactivates several peptide hormones including glucagon, enkephalins, substance P, neurotensin, oxytocin, and bradykinin. This gene, which encodes a 100-kD type II transmembrane glycoprotein, exists in a single copy of greater than 45 kb. The 5' untranslated region of this
<b>Function :</b>	catalytic activity:Preferential cleavage of polypeptides between hydrophobic residues, particularly with Phe or Tyr at P1'.,cofactor:Binds 1 zinc ion per subunit.,disease:Important cell surface marker in the diagnostic of human acute lymphocytic leukemia.,enzyme regulation:Inhibited in a dose dependent manner by opiorphin.,function:Thermolysin-like specificity, but is almost confined on acting on polypeptides of up to 30 amino acids. Biologically important in the destruction of opioid peptides such as Met- and Leu-enkephalins by cleavage of a Gly-Phe bond. Involved in the degradation of atrial natriuretic factor (ANF).,similarity:Belongs to the peptidase M13 family.,
<b>Subcellular Location :</b>	Cell membrane; Single-pass type II membrane protein.
<b>Expression :</b>	Adrenal cortex,Brain,Kidney,Placenta,
<b>Sort :</b>	3347
<b>No4 :</b>	1
<b>Host :</b>	Mouse
<b>Modifications :</b>	Unmodified

## Products Images

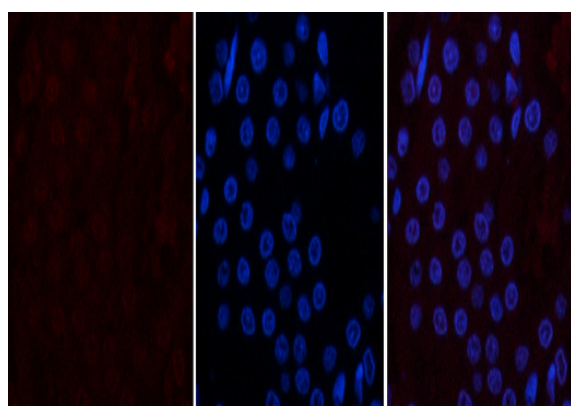


A

B

C

Immunofluorescence analysis of human-uterus tissue. 1,CD10 Monoclonal Antibody(5B8)(red) was diluted at 1:200(4°C,overnight). 2, Cy3 labeled Secondary antibody was diluted at 1:300(room temperature, 50min).3, Picture B: DAPI(blue) 10min. Picture A:Target. Picture B: DAPI. Picture C: merge of A+B

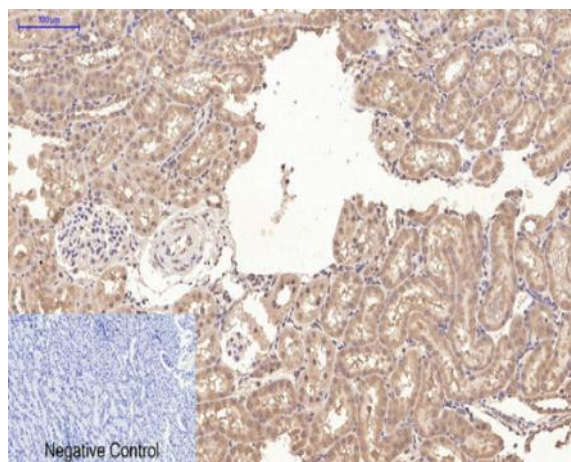


A

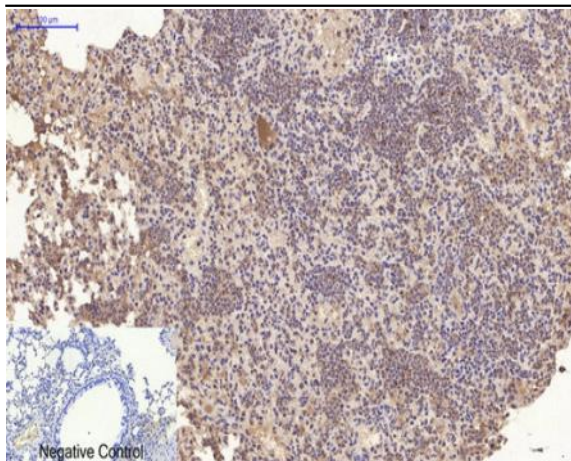
B

C

Immunofluorescence analysis of rat-kidney tissue. 1,CD10 Monoclonal Antibody(5B8)(red) was diluted at 1:200(4°C,overnight). 2, Cy3 labeled Secondary antibody was diluted at 1:300(room temperature, 50min).3, Picture B: DAPI(blue) 10min. Picture A:Target. Picture B: DAPI. Picture C: merge of A+B



Immunohistochemical analysis of paraffin-embedded Rat-kidney tissue. 1,CD10 Monoclonal Antibody(5B8) was diluted at 1:200(4°C,overnight). 2, Sodium citrate pH 6.0 was used for antibody retrieval(>98°C,20min). 3,Secondary antibody was diluted at 1:200(room temperature, 30min). Negative control was used by secondary antibody only.



Immunohistochemical analysis of paraffin-embedded Mouse-lung tissue. 1, CD10 Monoclonal Antibody (5B8) was diluted at 1:200 (4 °C, overnight). 2, Sodium citrate pH 6.0 was used for antibody retrieval (>98 °C, 20 min). 3, Secondary antibody was diluted at 1:200 (room temperature, 30 min). Negative control was used by secondary antibody only.