

**ABCA6 Polyclonal Antibody**

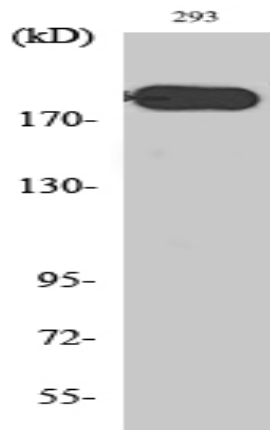
<b>Catalog No :</b>	YT0043
<b>Reactivity :</b>	Human;Mouse
<b>Applications :</b>	WB;ELISA
<b>Target :</b>	ABCA6
<b>Fields :</b>	>>ABC transporters
<b>Gene Name :</b>	ABCA6
<b>Protein Name :</b>	ATP-binding cassette sub-family A member 6
<b>Human Gene Id :</b>	23460
<b>Human Swiss Prot No :</b>	Q8N139
<b>Mouse Swiss Prot No :</b>	Q8K441
<b>Immunogen :</b>	Synthesized peptide derived from ABCA6 . at AA range: 1180-1260
<b>Specificity :</b>	ABCA6 Polyclonal Antibody detects endogenous levels of ABCA6 protein.
<b>Formulation :</b>	Liquid in PBS containing 50% glycerol, 0.5% BSA and 0.02% sodium azide.
<b>Source :</b>	Polyclonal, Rabbit,IgG
<b>Dilution :</b>	WB 1:500 - 1:2000. ELISA: 1:40000. Not yet tested in other applications.
<b>Purification :</b>	The antibody was affinity-purified from rabbit antiserum by affinity-chromatography using epitope-specific immunogen.
<b>Concentration :</b>	1 mg/ml
<b>Storage Stability :</b>	-15°C to -25°C/1 year(Do not lower than -25°C)

---

<b>Observed Band :</b>	185kD
<b>Cell Pathway :</b>	ABC transporters;
<b>Background :</b>	<p>The membrane-associated protein encoded by this gene is a member of the superfamily of ATP-binding cassette (ABC) transporters. ABC proteins transport various molecules across extra- and intracellular membranes. ABC genes are divided into seven distinct subfamilies (ABC1, MDR/TAP, MRP, ALD, OABP, GCN20, and White). This encoded protein is a member of the ABC1 subfamily. Members of the ABC1 subfamily comprise the only major ABC subfamily found exclusively in multicellular eukaryotes. This gene is clustered among 4 other ABC1 family members on 17q24 and may play a role in macrophage lipid homeostasis. [provided by RefSeq, Jul 2008],</p>
<b>Function :</b>	<p>developmental stage:Expressed in fetal kidney, lung and liver.,function:Probable transporter which may play a role in macrophage lipid homeostasis.,induction:Up-regulated during monocyte differentiation into macrophages. Down-regulated by cholesterol loading of macrophages.,similarity:Belongs to the ABC transporter family. ABCA subfamily.,similarity:Contains 2 ABC transporter domains.,tissue specificity:Widely expressed with higher expression in liver.,</p>
<b>Subcellular Location :</b>	Golgi apparatus membrane ; Multi-pass membrane protein .
<b>Expression :</b>	Widely expressed with higher expression in liver.
<b>Sort :</b>	1572
<b>No4 :</b>	1
<b>Host :</b>	Rabbit
<b>Modifications :</b>	Unmodified

---

## Products Images



Western Blot analysis of various cells using ABCA6 Polyclonal Antibody