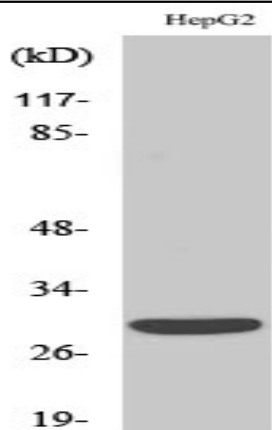


**ACBD6 Polyclonal Antibody**

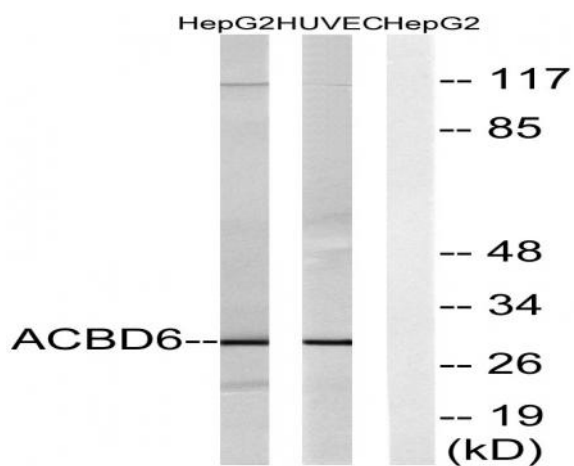
<b>Catalog No :</b>	YT0072
<b>Reactivity :</b>	Human;Mouse;Rat
<b>Applications :</b>	WB;IHC;IF;ELISA
<b>Target :</b>	ACBD6
<b>Gene Name :</b>	ACBD6
<b>Protein Name :</b>	Acyl-CoA-binding domain-containing protein 6
<b>Human Gene Id :</b>	84320
<b>Human Swiss Prot No :</b>	Q9BR61
<b>Mouse Gene Id :</b>	72482
<b>Mouse Swiss Prot No :</b>	Q9D061
<b>Rat Gene Id :</b>	289125
<b>Rat Swiss Prot No :</b>	Q5RJK8
<b>Immunogen :</b>	The antiserum was produced against synthesized peptide derived from human ACBD6. AA range:121-170
<b>Specificity :</b>	ACBD6 Polyclonal Antibody detects endogenous levels of ACBD6 protein.
<b>Formulation :</b>	Liquid in PBS containing 50% glycerol, 0.5% BSA and 0.02% sodium azide.
<b>Source :</b>	Polyclonal, Rabbit,IgG
<b>Dilution :</b>	WB 1:500 - 1:2000. IHC 1:100 - 1:300. ELISA: 1:10000.. IF 1:50-200
<b>Purification :</b>	The antibody was affinity-purified from rabbit antiserum by affinity-chromatography using epitope-specific immunogen.

<b>Concentration :</b>	1 mg/ml
<b>Storage Stability :</b>	-15°C to -25°C/1 year(Do not lower than -25°C)
<b>Observed Band :</b>	30kD
<b>Background :</b>	function: Binds long-chain acyl-coenzyme A molecules with a strong preference for unsaturated C18:1-CoA, lower affinity for unsaturated C20:4-CoA, and very weak affinity for saturated C16:0-CoA. Does not bind fatty acids., similarity: Contains 1 ACB (acyl-CoA-binding) domain., similarity: Contains 2 ANK repeats., subunit: Monomer., tissue specificity: Detected in placenta and spleen (at protein level). Detected in placenta, umbilical cord blood, CD34-positive hematopoietic progenitor cells and bone marrow.,
<b>Function :</b>	function: Binds long-chain acyl-coenzyme A molecules with a strong preference for unsaturated C18:1-CoA, lower affinity for unsaturated C20:4-CoA, and very weak affinity for saturated C16:0-CoA. Does not bind fatty acids., similarity: Contains 1 ACB (acyl-CoA-binding) domain., similarity: Contains 2 ANK repeats., subunit: Monomer., tissue specificity: Detected in placenta and spleen (at protein level). Detected in placenta, umbilical cord blood, CD34-positive hematopoietic progenitor cells and bone marrow.,
<b>Subcellular Location :</b>	Cytoplasm .
<b>Expression :</b>	Detected in placenta and spleen (at protein level). Detected in placenta, umbilical cord blood, CD34-positive hematopoietic progenitor cells and bone marrow.
<b>Sort :</b>	1616
<b>No4 :</b>	1
<b>Host :</b>	Rabbit
<b>Modifications :</b>	Unmodified

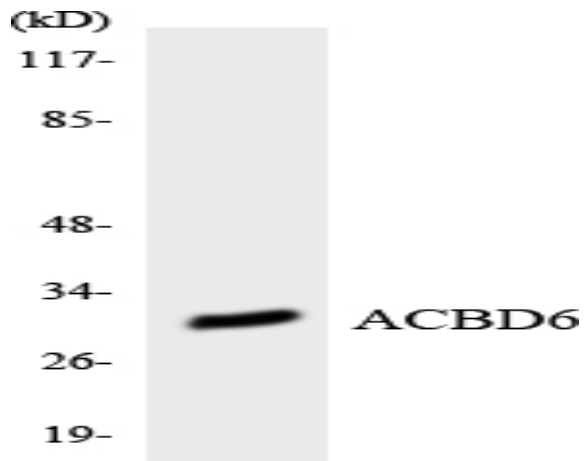
## Products Images



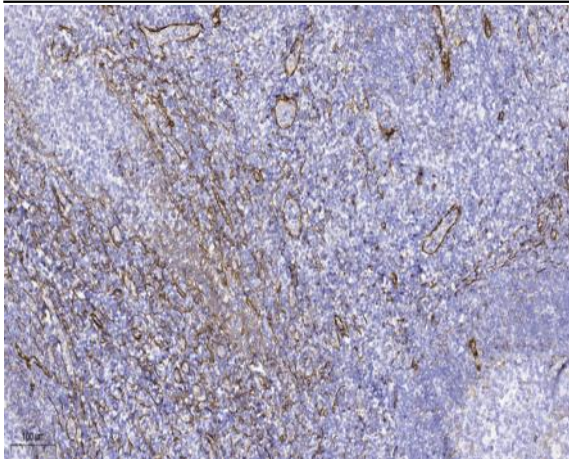
Western Blot analysis of various cells using ACBD6 Polyclonal Antibody diluted at 1:1000



Western blot analysis of lysates from HepG2 and HUVEC cells, using ACBD6 Antibody. The lane on the right is blocked with the synthesized peptide.



Western blot analysis of the lysates from K562 cells using ACBD6 antibody.



Immunohistochemical analysis of paraffin-embedded human tonsil. 1, Tris-EDTA, pH 9.0 was used for antigen retrieval. 2 Antibody was diluted at 1:200 (4° overnight). 3, Secondary antibody was diluted at 1:200 (room temperature, 45 min).