

AGBL4 Polyclonal Antibody

Catalog No :	YT0141
Reactivity :	Human;Mouse
Applications :	WB;ELISA
Target :	AGBL4
Gene Name :	AGBL4
Protein Name :	Cytosolic carboxypeptidase 6
Human Gene Id :	84871
Human Swiss Prot No :	Q5VU57
Mouse Swiss Prot No :	Q09LZ8
Immunogen :	The antiserum was produced against synthesized peptide derived from human AGBL4. AA range:431-480
Specificity :	AGBL4 Polyclonal Antibody detects endogenous levels of AGBL4 protein.
Formulation :	Liquid in PBS containing 50% glycerol, 0.5% BSA and 0.02% sodium azide.
Source :	Polyclonal, Rabbit,IgG
Dilution :	WB 1:500 - 1:2000. ELISA: 1:20000. Not yet tested in other applications.
Purification :	The antibody was affinity-purified from rabbit antiserum by affinity-chromatography using epitope-specific immunogen.
Concentration :	1 mg/ml
Storage Stability :	-15°C to -25°C/1 year(Do not lower than -25°C)
Observed Band :	62kD

Background : cofactor: Binds 1 zinc ion per subunit., function: May play a role in the processing of tubulin., similarity: Belongs to the peptidase M14 family.,

Function : cofactor: Binds 1 zinc ion per subunit., function: May play a role in the processing of tubulin., similarity: Belongs to the peptidase M14 family.,

Subcellular Location : Cytoplasm, cytosol . Cytoplasm, cytoskeleton, microtubule organizing center, centrosome, centriole . Golgi apparatus . Cytoplasm, cytoskeleton, cilium basal body . Colocalizes with gamma-tubulin in the centrioles at interphase and dividing cells and with glutamylated tubulin in basal bodies of ciliated cells. .

Expression : Brain, Whole embryo,

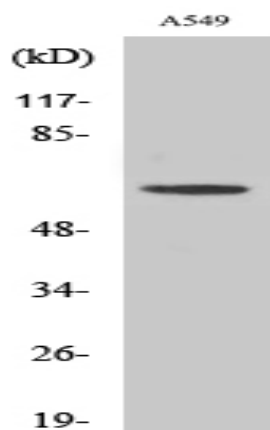
Sort : 1787

No4 : 1

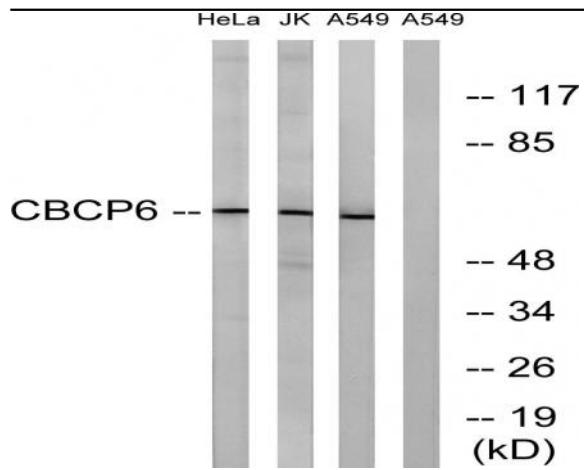
Host : Rabbit

Modifications : Unmodified

Products Images



Western Blot analysis of various cells using AGLB4 Polyclonal Antibody



Western blot analysis of lysates from A549, HeLa, and Jurkat cells, using AGL4 Antibody. The lane on the right is blocked with the synthesized peptide.