

## AI-BP Polyclonal Antibody

<b>Catalog No :</b>	YT0147
<b>Reactivity :</b>	Human;Mouse;Rat
<b>Applications :</b>	WB;IF;ELISA
<b>Target :</b>	AI-BP
<b>Gene Name :</b>	APOA1BP
<b>Protein Name :</b>	NAD(P)H-hydrate epimerase
<b>Human Gene Id :</b>	128240
<b>Human Swiss Prot No :</b>	Q8NCW5
<b>Mouse Gene Id :</b>	246703
<b>Mouse Swiss Prot No :</b>	Q8K4Z3
<b>Rat Swiss Prot No :</b>	B0BNM1
<b>Immunogen :</b>	The antiserum was produced against synthesized peptide derived from human AIBP. AA range:121-170
<b>Specificity :</b>	AI-BP Polyclonal Antibody detects endogenous levels of AI-BP protein.
<b>Formulation :</b>	Liquid in PBS containing 50% glycerol, 0.5% BSA and 0.02% sodium azide.
<b>Source :</b>	Polyclonal, Rabbit,IgG
<b>Dilution :</b>	WB 1:500 - 1:2000. IF 1:200 - 1:1000. ELISA: 1:40000. Not yet tested in other applications.
<b>Purification :</b>	The antibody was affinity-purified from rabbit antiserum by affinity-chromatography using epitope-specific immunogen.
<b>Concentration :</b>	1 mg/ml

**Storage Stability :** -15°C to -25°C/1 year(Do not lower than -25°C)

**Observed Band :** 30kD

**Background :** The product of this gene interacts with apolipoprotein A-I (apoA-I), the major apolipoprotein of high-density lipoproteins (HDLs). It is secreted into some bodily fluids, and its synthesis and secretion are stimulated in vitro by incubating cells with apoA-I. The human genome contains related pseudogenes. [provided by RefSeq, Jul 2008],

**Function :** similarity:Contains 1 YjeF N-terminal domain.,subunit:Interacts with APOA1 and APOA2.,tissue specificity:Ubiquitously expressed, with highest levels in kidney, heart and liver. Present in cerebrospinal fluid and urine but not in serum from healthy patients. Present in serum of sepsis patients (at protein level).,

**Subcellular Location :** Mitochondrion . Secreted . In sperm, secretion gradually increases during capacitation. .

**Expression :** Ubiquitously expressed, with highest levels in kidney, heart and liver. Present in cerebrospinal fluid and urine but not in serum from healthy patients. Present in serum of sepsis patients (at protein level).

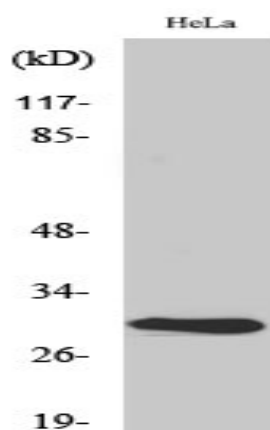
**Sort :** 1799

**No4 :** 1

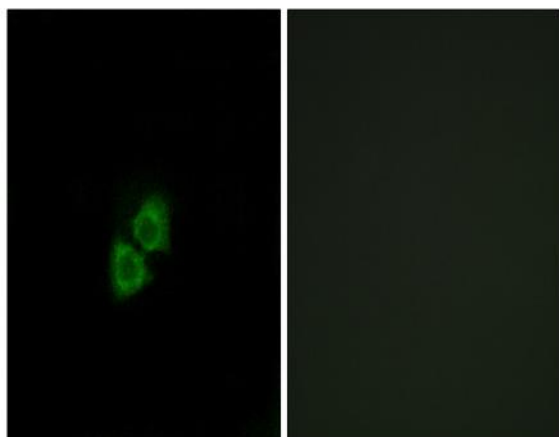
**Host :** Rabbit

**Modifications :** Unmodified

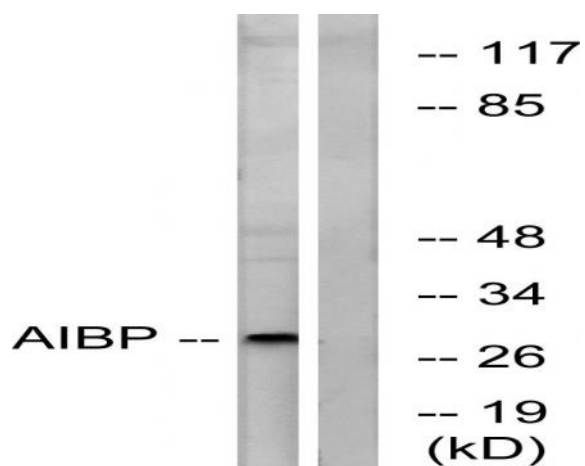
## Products Images



Western Blot analysis of various cells using AI-BP Polyclonal Antibody diluted at 1:2000



Immunofluorescence analysis of A549 cells, using AIBP Antibody. The picture on the right is blocked with the synthesized peptide.



Western blot analysis of lysates from HeLa cells, using AIBP Antibody. The lane on the right is blocked with the synthesized peptide.