

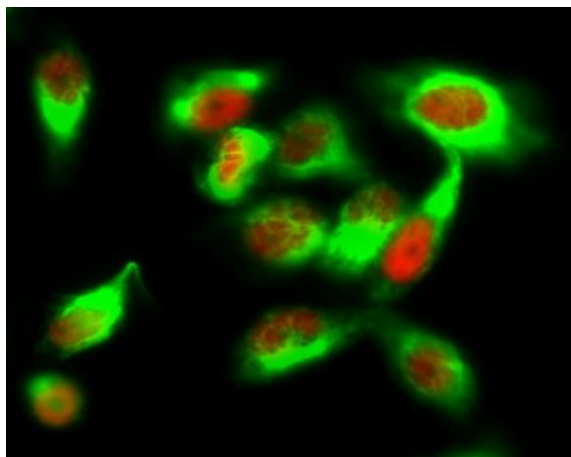
β-tubulin Monoclonal Antibody(M7)

Catalog No :	YM3135
Reactivity :	Human;Mouse;Rat
Applications :	WB;IF
Target :	Tubulin β
Fields :	>>Phagosome;>>Gap junction;>>Alzheimer disease;>>Parkinson disease;>>Amyotrophic lateral sclerosis;>>Huntington disease;>>Prion disease;>>Pathways of neurodegeneration - multiple diseases;>>Pathogenic Escherichia coli infection;>>Salmonella infection
Gene Name :	TUBB3
Protein Name :	Tubulin beta-3 chain
Human Gene Id :	10381
Human Swiss Prot No :	Q13509
Mouse Gene Id :	22152
Mouse Swiss Prot No :	Q9ERD7
Rat Gene Id :	246118
Rat Swiss Prot No :	Q4QRB4
Immunogen :	Synthetic Peptide of β-tubulin
Specificity :	The antibody detects endogenousβ-tubulin protein.
Formulation :	PBS, pH 7.4, containing 0.5%BSA, 0.02% sodium azide as Preservative and 50% Glycerol.
Source :	Monoclonal, Mouse

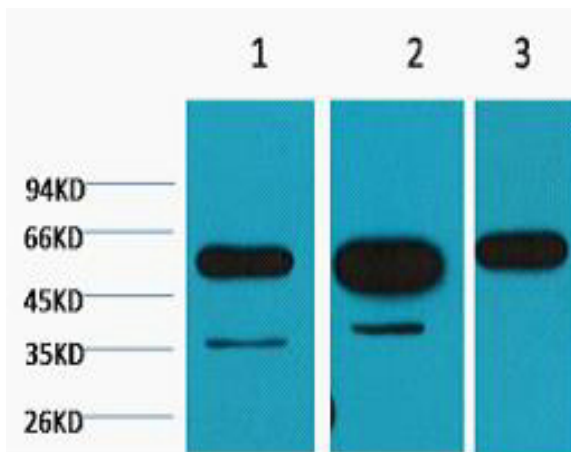
Dilution :	WB 1:5000 -10000 IF 1:100-200
Purification :	The antibody was affinity-purified from mouse ascites by affinity-chromatography using specific immunogen.
Concentration :	1 mg/ml
Storage Stability :	-15°C to -25°C/1 year(Do not lower than -25°C)
Observed Band :	55kD
Background :	tubulin beta 3 class III(TUBB3) Homo sapiens This gene encodes a class III member of the beta tubulin protein family. Beta tubulins are one of two core protein families (alpha and beta tubulins) that heterodimerize and assemble to form microtubules. This protein is primarily expressed in neurons and may be involved in neurogenesis and axon guidance and maintenance. Mutations in this gene are the cause of congenital fibrosis of the extraocular muscles type 3. Alternate splicing results in multiple transcript variants. A pseudogene of this gene is found on chromosome 6. [provided by RefSeq, Oct 2010],
Function :	domain:The highly acidic C-terminal region may bind cations such as calcium.,function:Receptor for MSH (alpha, beta and gamma) and ACTH. The activity of this receptor is mediated by G proteins which activate adenylate cyclase.,function:Tubulin is the major constituent of microtubules. It binds two moles of GTP, one at an exchangeable site on the beta chain and one at a non-exchangeable site on the alpha-chain.,polymorphism:Genetic variations in MC1R are associated with variation in skin/hair/eye pigmentation type 2 (SHEP2) [MIM:266300]. Hair, eye and skin pigmentation are among the most visible examples of human phenotypic variation, with a broad normal range that is subject to substantial geographic stratification. In the case of skin, individuals tend to have lighter pigmentation with increasing distance from the equator. By contrast, the majority of variation in human eye and hair col
Subcellular Location :	Cytoplasm, cytoskeleton . Cell projection, growth cone . Cell projection, lamellipodium . Cell projection, filopodium .
Expression :	Expression is primarily restricted to central and peripheral nervous system. Greatly increased expression in most cancerous tissues.
Tag :	orthogonal
Sort :	1281
No4 :	1
Host :	Mouse

Modifications : Unmodified

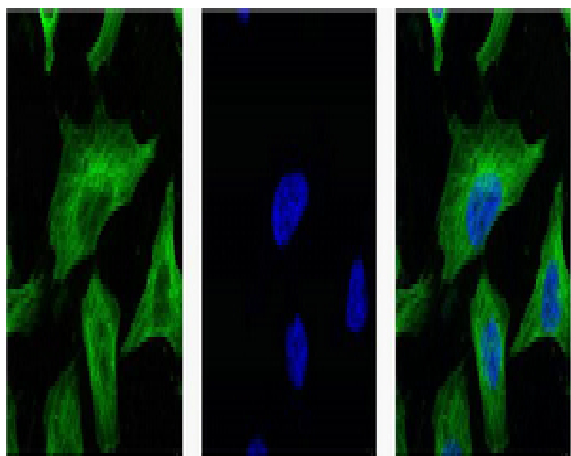
Products Images



Immunofluorescence analysis of HeLa cell. 1, ERK 1/2 (phospho Tyr222/205) Polyclonal Antibody (red) was diluted at 1:200 (4° overnight). β -tubulin Monoclonal Antibody (M7) (green) was diluted at 1:200 (4° overnight). 2, Goat Anti Rabbit Alexa Fluor 594 Catalog:RS3611 was diluted at 1:1000 (room temperature, 50min). Goat Anti Mouse Alexa Fluor 488 Catalog:RS3208 was diluted at 1:1000 (room temperature, 50min).



Western blot analysis of 1) HeLa, 2) Mouse Brain tissue, 3) Rat Brain tissue, diluted at 1:5000.



IF analysis of HeLa with antibody (Left) and DAPI (Right) diluted at 1:100.