

## APC1 Polyclonal Antibody

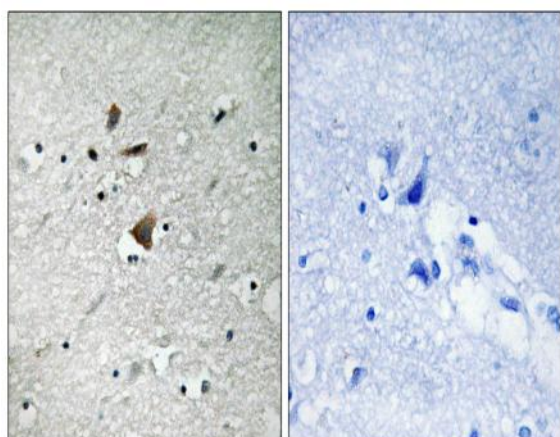
<b>Catalog No :</b>	YT0261
<b>Reactivity :</b>	Human;Mouse
<b>Applications :</b>	IHC;IF;ELISA
<b>Target :</b>	APC1
<b>Fields :</b>	>>Cell cycle;>>Oocyte meiosis;>>Ubiquitin mediated proteolysis;>>Progesterone-mediated oocyte maturation;>>Human T-cell leukemia virus 1 infection
<b>Gene Name :</b>	ANAPC1
<b>Protein Name :</b>	Anaphase-promoting complex subunit 1
<b>Human Gene Id :</b>	64682
<b>Human Swiss Prot No :</b>	Q9H1A4
<b>Mouse Gene Id :</b>	17222
<b>Mouse Swiss Prot No :</b>	P53995
<b>Immunogen :</b>	The antiserum was produced against synthesized peptide derived from human APC1. AA range:321-370
<b>Specificity :</b>	APC1 Polyclonal Antibody detects endogenous levels of APC1 protein.
<b>Formulation :</b>	Liquid in PBS containing 50% glycerol, 0.5% BSA and 0.02% sodium azide.
<b>Source :</b>	Polyclonal, Rabbit,IgG
<b>Dilution :</b>	IHC 1:100 - 1:300. ELISA: 1:40000.. IF 1:50-200
<b>Purification :</b>	The antibody was affinity-purified from rabbit antiserum by affinity-chromatography using epitope-specific immunogen.

---

<b>Concentration :</b>	1 mg/ml
<b>Storage Stability :</b>	-15°C to -25°C/1 year(Do not lower than -25°C)
<b>Molecularweight :</b>	217kD
<b>Cell Pathway :</b>	Cell_Cycle_G1S;Cell_Cycle_G2M_DNA;Oocyte meiosis;Ubiquitin mediated proteolysis;Progesterone-mediated oocyte maturation;
<b>Background :</b>	This gene encodes a subunit of the anaphase-promoting complex. This complex is an E3 ubiquitin ligase that regulates progression through the metaphase to anaphase portion of the cell cycle by ubiquitinating proteins which targets them for degradation. [provided by RefSeq, Dec 2011],
<b>Function :</b>	function:Component of the anaphase promoting complex/cyclosome (APC/C), a cell cycle-regulated E3 ubiquitin ligase that controls progression through mitosis and the G1 phase of the cell cycle.,pathway:Protein modification; protein ubiquitination.,PTM:Phosphorylated. Phosphorylation on Ser-355 occurs specifically during mitosis.,similarity:Belongs to the APC1 family.,similarity:Contains 4 PC repeats.,subunit:The APC/C is composed of at least 11 subunits.,
<b>Subcellular Location :</b>	nucleoplasm,anaphase-promoting complex,cytosol,
<b>Expression :</b>	Colon,Epithelium,Ovary,Placenta,

---

## Products Images



Immunohistochemistry analysis of paraffin-embedded human brain tissue, using APC1 Antibody. The picture on the right is blocked with the synthesized peptide.