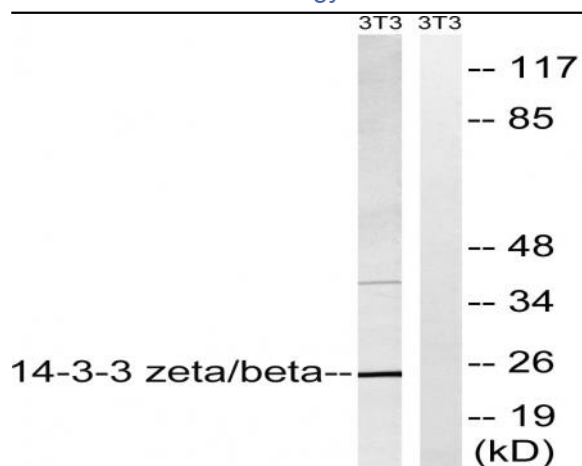


## 14-3-3 $\beta/\zeta$ Polyclonal Antibody

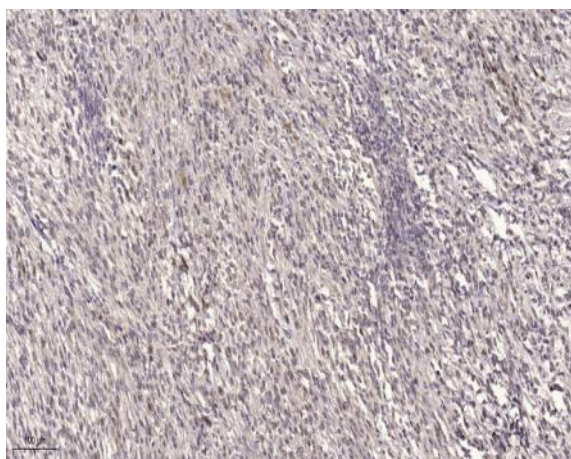
<b>Catalog No :</b>	YT0003
<b>Reactivity :</b>	Human;Mouse;Rat
<b>Applications :</b>	WB;IHC;IF;ELISA
<b>Target :</b>	14-3-3 $\beta/\zeta$
<b>Fields :</b>	>>Cell cycle;>>Oocyte meiosis;>>PI3K-Akt signaling pathway;>>Hippo signaling pathway;>>Hepatitis C;>>Hepatitis B;>>Viral carcinogenesis
<b>Gene Name :</b>	YWHAB/YWHAZ
<b>Protein Name :</b>	14-3-3 protein beta/alpha/14-3-3 protein zeta/delta
<b>Human Gene Id :</b>	7534/7529
<b>Human Swiss Prot No :</b>	P63104/P31946
<b>Mouse Gene Id :</b>	22631/54401
<b>Rat Gene Id :</b>	25578/56011
<b>Rat Swiss Prot No :</b>	P63102/P35213
<b>Immunogen :</b>	The antiserum was produced against synthesized peptide derived from human YWHAZ. AA range:151-200
<b>Specificity :</b>	14-3-3 $\beta/\zeta$ Polyclonal Antibody detects endogenous levels of 14-3-3 $\beta/\zeta$ protein.
<b>Formulation :</b>	Liquid in PBS containing 50% glycerol, 0.5% BSA and 0.02% sodium azide.
<b>Source :</b>	Polyclonal, Rabbit,IgG
<b>Dilution :</b>	WB 1:500 - 1:2000. ELISA: 1:20000.. IF 1:50-200
<b>Purification :</b>	The antibody was affinity-purified from rabbit antiserum by affinity-chromatography using epitope-specific immunogen.

<b>Concentration :</b>	<u>1 mg/ml</u>
<b>Storage Stability :</b>	<u>-15°C to -25°C/1 year(Do not lower than -25°C)</u>
<b>Observed Band :</b>	<u>24kD</u>
<b>Cell Pathway :</b>	<u>Akt_PKB;Cell_Cycle_G1S;Cell_Cycle_G2M_DNA;Oocyte meiosis;Neurotrophin;Pathogenic Escherichia coli infection;</u>
<b>Background :</b>	<u>This gene product belongs to the 14-3-3 family of proteins which mediate signal transduction by binding to phosphoserine-containing proteins. This highly conserved protein family is found in both plants and mammals, and this protein is 99% identical to the mouse, rat and sheep orthologs. The encoded protein interacts with IRS1 protein, suggesting a role in regulating insulin sensitivity. Several transcript variants that differ in the 5' UTR but that encode the same protein have been identified for this gene. [provided by RefSeq, Oct 2008],</u>
<b>Function :</b>	<u>caution:Was originally (PubMed:1577711) thought to have phospholipase A2 activity.,function:Adapter protein implicated in the regulation of a large spectrum of both general and specialized signaling pathway. Binds to a large number of partners, usually by recognition of a phosphoserine or phosphothreonine motif. Binding generally results in the modulation of the activity of the binding partner.,PTM:The delta, brain-specific form differs from the zeta form in being phosphorylated (By similarity). Phosphorylation on Ser-184 by MAPK8; promotes dissociation of BAX and translocation of BAX to mitochondria. Phosphorylation on Ser-58 by PKA; disrupts homodimerization and heterodimerization with YHAE and TP53. This phosphorylation appears to be activated by sphingosine. Phosphorylation on Thr-232; inhibits binding of RAF1.,similarity:Belongs to the 14-3-3 family.,subcellular location:Located to</u>
<b>Subcellular Location :</b>	<u>Cytoplasm . Melanosome . Located to stage I to stage IV melanosomes.</u>
<b>Expression :</b>	<u>B-cell lymphoma,Bone marrow</u>

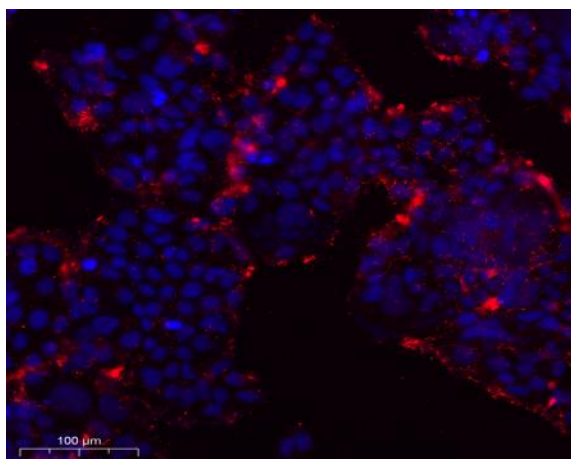
## Products Images



Western blot analysis of lysates from NIH/3T3 cells, using 14-3-3 beta/zeta Antibody. The lane on the right is blocked with the synthesized peptide.



Immunohistochemical analysis of paraffin-embedded human small intestinal carcinoma tissue. 1, primary Antibody was diluted at 1:200 (4° overnight). 2, Sodium citrate pH 6.0 was used for antigen retrieval (>98° C, 20min). 3, Secondary antibody was diluted at 1:200



Immunofluorescence analysis of Caco2 cell. 1, primary Antibody was diluted at 1:100 (4° C overnight). 2, Goat Anti Rabbit IgG (H&L) - AFluor 594 Secondary antibody (catalog No: RS3611) was diluted at 1:500 (room temperature, 50min).