

## Arrestin- $\beta$ -1 Polyclonal Antibody

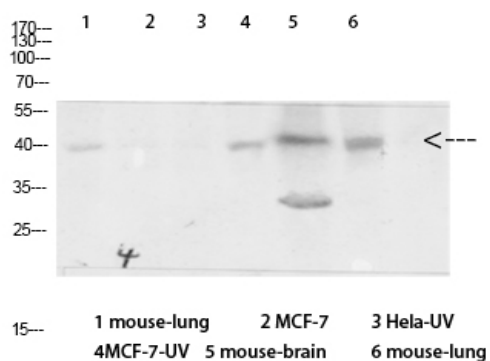
<b>Catalog No :</b>	YT0343
<b>Reactivity :</b>	Human;Monkey
<b>Applications :</b>	WB;IHC;IF;ELISA
<b>Target :</b>	Arrestin 1
<b>Fields :</b>	>>MAPK signaling pathway;>>Chemokine signaling pathway;>>Endocytosis;>>Hedgehog signaling pathway;>>Dopaminergic synapse;>>Olfactory transduction;>>Relaxin signaling pathway;>>Parathyroid hormone synthesis, secretion and action;>>GnRH secretion;>>Morphine addiction;>>Chemical carcinogenesis - receptor activation
<b>Gene Name :</b>	ARRB1
<b>Protein Name :</b>	Beta-arrestin-1
<b>Human Gene Id :</b>	408
<b>Human Swiss Prot No :</b>	P49407
<b>Mouse Swiss Prot No :</b>	Q8BWG8
<b>Immunogen :</b>	The antiserum was produced against synthesized peptide derived from human Arrestin 1. AA range:369-418
<b>Specificity :</b>	Arrestin- $\beta$ -1 Polyclonal Antibody detects endogenous levels of Arrestin- $\beta$ -1 protein.
<b>Formulation :</b>	Liquid in PBS containing 50% glycerol, 0.5% BSA and 0.02% sodium azide.
<b>Source :</b>	Polyclonal, Rabbit,IgG
<b>Dilution :</b>	WB 1:500 - 1:2000. IHC 1:100 - 1:300. IF 1:200 - 1:1000. ELISA: 1:10000. Not yet tested in other applications.
<b>Purification :</b>	The antibody was affinity-purified from rabbit antiserum by affinity-chromatography using epitope-specific immunogen.

<b>Concentration :</b>	<u>1 mg/ml</u>
<b>Storage Stability :</b>	<u>-15°C to -25°C/1 year(Do not lower than -25°C)</u>
<b>Observed Band :</b>	<u>47kD</u>
<b>Cell Pathway :</b>	<u>MAPK_ERK_Growth;MAPK_G_Protein;Chemokine;Endocytosis;</u>
<b>Background :</b>	<p>Members of arrestin/beta-arrestin protein family are thought to participate in agonist-mediated desensitization of G-protein-coupled receptors and cause specific dampening of cellular responses to stimuli such as hormones, neurotransmitters, or sensory signals. Arrestin beta 1 is a cytosolic protein and acts as a cofactor in the beta-adrenergic receptor kinase (BARK) mediated desensitization of beta-adrenergic receptors. Besides the central nervous system, it is expressed at high levels in peripheral blood leukocytes, and thus the BARK/beta-arrestin system is believed to play a major role in regulating receptor-mediated immune functions. Alternatively spliced transcripts encoding different isoforms of arrestin beta 1 have been described. [provided by RefSeq, Jan 2011],</p>
<b>Function :</b>	<p>function:Regulates beta-adrenergic receptor function. Beta-arrestins seem to bind phosphorylated beta-adrenergic receptors, thereby causing a significant impairment of their capacity to activate G(S) proteins.,online information:Arrestin entry,similarity:Belongs to the arrestin family.,</p>
<b>Subcellular Location :</b>	<p>Cytoplasm. Nucleus. Cell membrane. Membrane, clathrin-coated pit . Cell projection, pseudopodium . Cytoplasmic vesicle. Translocates to the plasma membrane and colocalizes with antagonist-stimulated GPCRs. The monomeric form is predominantly located in the nucleus. The oligomeric form is located in the cytoplasm. Translocates to the nucleus upon stimulation of OPRD1 (By similarity).</p>
<b>Expression :</b>	<u>Brain,Peripheral blood,Uterus,</u>

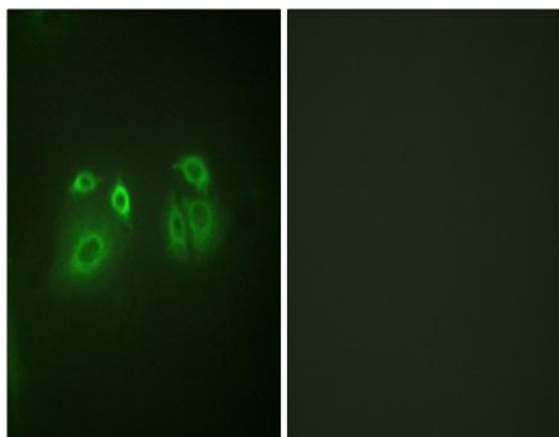
## Products Images



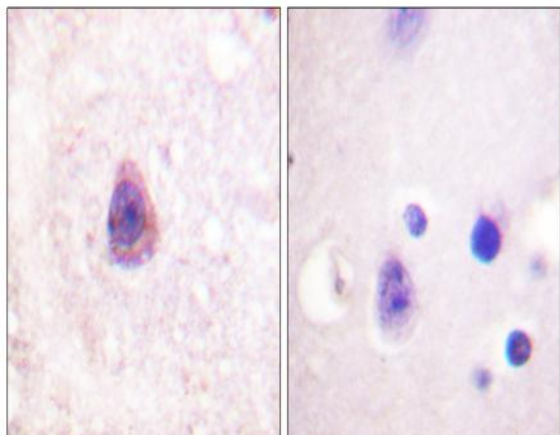
Western Blot analysis of various cells using Arrestin- $\beta$ -1 Polyclonal Antibody diluted at 1:500



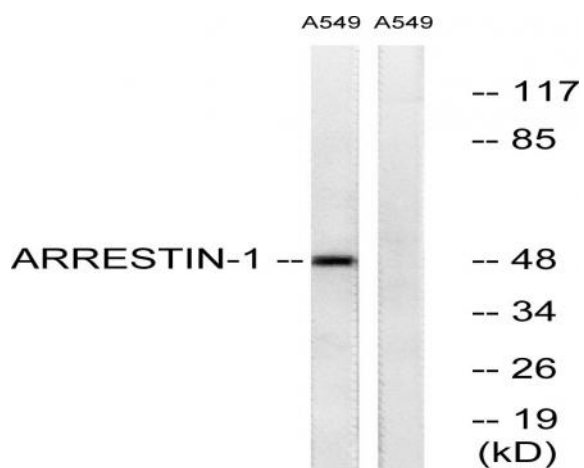
Western Blot analysis of various cells using Antibody diluted at 1:1000. Secondary antibody(catalog#:RS0002) was diluted at 1:20000



Immunofluorescence analysis of A549 cells, using Arrestin 1 Antibody. The picture on the right is blocked with the synthesized peptide.



Immunohistochemistry analysis of paraffin-embedded human brain tissue, using Arrestin 1 Antibody. The picture on the right is blocked with the synthesized peptide.



Western blot analysis of lysates from A549 cells, treated with Etoposide 25uM 60', using Arrestin 1 Antibody. The lane on the right is blocked with the synthesized peptide.