

ABHD9 Polyclonal Antibody

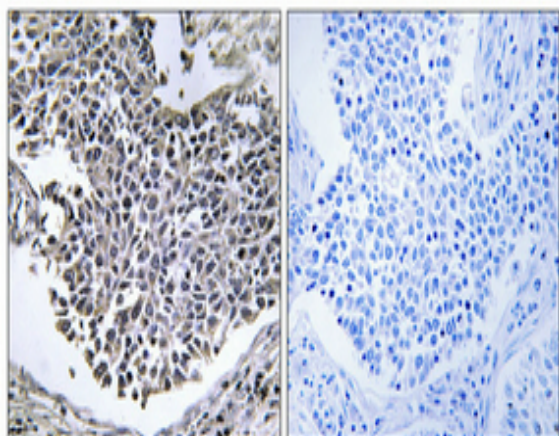
Catalog No :	YT0064
Reactivity :	Human;Mouse
Applications :	WB;IHC;IF;ELISA
Target :	ABHD9
Fields :	>>Chemical carcinogenesis - receptor activation;>>Chemical carcinogenesis - reactive oxygen species
Gene Name :	EPHX3
Protein Name :	Epoxide hydrolase 3
Human Gene Id :	79852
Human Swiss Prot No :	Q9H6B9
Mouse Swiss Prot No :	Q3V1F8
Immunogen :	The antiserum was produced against synthesized peptide derived from human ABHD9. AA range:101-150
Specificity :	ABHD9 Polyclonal Antibody detects endogenous levels of ABHD9 protein.
Formulation :	Liquid in PBS containing 50% glycerol, 0.5% BSA and 0.02% sodium azide.
Source :	Polyclonal, Rabbit,IgG
Dilution :	WB 1:500 - 1:2000. IHC 1:100 - 1:300. ELISA: 1:40000.. IF 1:50-200
Purification :	The antibody was affinity-purified from rabbit antiserum by affinity-chromatography using epitope-specific immunogen.
Concentration :	1 mg/ml
Storage Stability :	-15°C to -25°C/1 year(Do not lower than -25°C)

Observed Band : 38kD

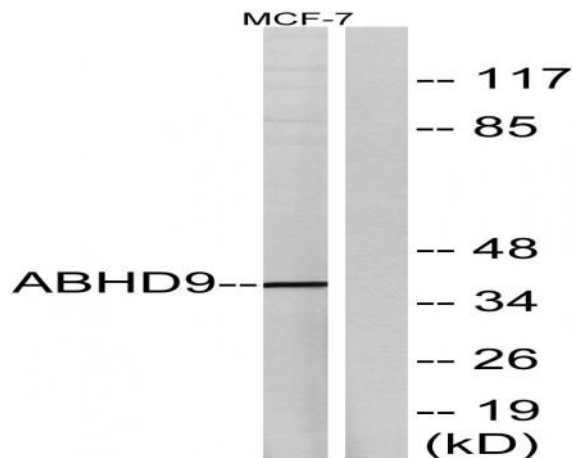
Background : EPHX3 (Epoxide Hydrolase 3) is a Protein Coding gene. GO annotations related to this gene include hydrolase activity. An important paralog of this gene is EPHX4.

Subcellular Location : Microsome membrane ; Single-pass membrane protein .

Products Images



Immunohistochemical analysis of paraffin-embedded Human lung cancer. Antibody was diluted at 1:100(4° overnight). High-pressure and temperature Tris-EDTA, pH8.0 was used for antigen retrieval. Negative control (right) obtained from antibody was pre-absorbed by immunogen peptide.



Western blot analysis of lysates from MCF-7 cells, using ABHD9 Antibody. The lane on the right is blocked with the synthesized peptide.