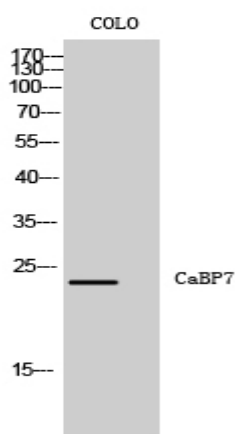


## CaBP7 Polyclonal Antibody

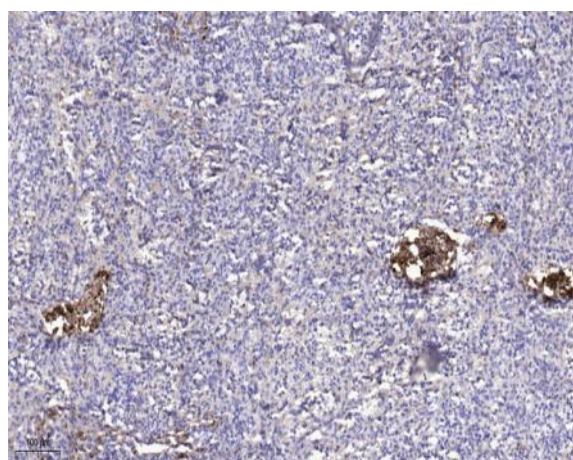
|                              |   |
|------------------------------|---|
| <b>Catalog No :</b>          | YT0590  |
| <b>Reactivity :</b>          | Human;Mouse;Rat   |
| <b>Applications :</b>        | WB;IHC;IF;ELISA   |
| <b>Target :</b>              | CaBP7   |
| <b>Gene Name :</b>           | CABP7   |
| <b>Protein Name :</b>        | Calcium-binding protein 7   |
| <b>Human Gene Id :</b>       | 164633  |
| <b>Human Swiss Prot No :</b> | Q86V35  |
| <b>Mouse Gene Id :</b>       | 192650  |
| <b>Mouse Swiss Prot No :</b> | Q91ZM8  |
| <b>Rat Gene Id :</b>         | 360970  |
| <b>Rat Swiss Prot No :</b>   | Q66H96  |
| <b>Immunogen :</b>           | The antiserum was produced against synthesized peptide derived from human CABP7. AA range:1-50                        |
| <b>Specificity :</b>         | CaBP7 Polyclonal Antibody detects endogenous levels of CaBP7 protein.   |
| <b>Formulation :</b>         | Liquid in PBS containing 50% glycerol, 0.5% BSA and 0.02% sodium azide.   |
| <b>Source :</b>              | Polyclonal, Rabbit,IgG  |
| <b>Dilution :</b>            | WB 1:500 - 1:2000. IHC 1:100 - 1:300. ELISA: 1:10000.. IF 1:50-200  |
| <b>Purification :</b>        | The antibody was affinity-purified from rabbit antiserum by affinity-chromatography using epitope-specific immunogen. |

|                               |   |
|-------------------------------|---|
| <b>Concentration :</b>        | 1 mg/ml   |
| <b>Storage Stability :</b>    | -15°C to -25°C/1 year(Do not lower than -25°C)  |
| <b>Observed Band :</b>        | 25kD  |
| <b>Background :</b>           | similarity:Contains 2 EF-hand domains.,   |
| <b>Function :</b>             | similarity:Contains 2 EF-hand domains.,   |
| <b>Subcellular Location :</b> | Golgi apparatus, trans-Golgi network membrane ; Single-pass type IV membrane protein . Cytoplasm, perinuclear region . Cell membrane ; Single-pass type IV membrane protein . |
| <b>Expression :</b>           | Brain,Epithelium,   |

## Products Images



Western Blot analysis of COLO cells using CaBP7 Polyclonal Antibody diluted at 1:1000



Immunohistochemical analysis of paraffin-embedded human spleen. 1, Antibody was diluted at 1:200(4° overnight). 2, Tris-EDTA,pH9.0 was used for antigen retrieval. 3,Secondary antibody was diluted at 1:200(room temperature, 45min).