

**AF-10 Polyclonal Antibody**

<b>Catalog No :</b>	YT0139
<b>Reactivity :</b>	Human;Mouse
<b>Applications :</b>	WB;IHC;IF;ELISA
<b>Target :</b>	AF-10
<b>Gene Name :</b>	MLLT10
<b>Protein Name :</b>	Protein AF-10
<b>Human Gene Id :</b>	8028
<b>Human Swiss Prot No :</b>	P55197
<b>Mouse Gene Id :</b>	17354
<b>Mouse Swiss Prot No :</b>	O54826
<b>Immunogen :</b>	The antiserum was produced against synthesized peptide derived from human AF10. AA range:211-260
<b>Specificity :</b>	AF-10 Polyclonal Antibody detects endogenous levels of AF-10 protein.
<b>Formulation :</b>	Liquid in PBS containing 50% glycerol, 0.5% BSA and 0.02% sodium azide.
<b>Source :</b>	Polyclonal, Rabbit,IgG
<b>Dilution :</b>	WB 1:500 - 1:2000. IHC 1:100 - 1:300. IF 1:200 - 1:1000. ELISA: 1:10000. Not yet tested in other applications.
<b>Purification :</b>	The antibody was affinity-purified from rabbit antiserum by affinity-chromatography using epitope-specific immunogen.
<b>Concentration :</b>	1 mg/ml
<b>Storage Stability :</b>	-15°C to -25°C/1 year(Do not lower than -25°C)

**Observed Band :** 109kD

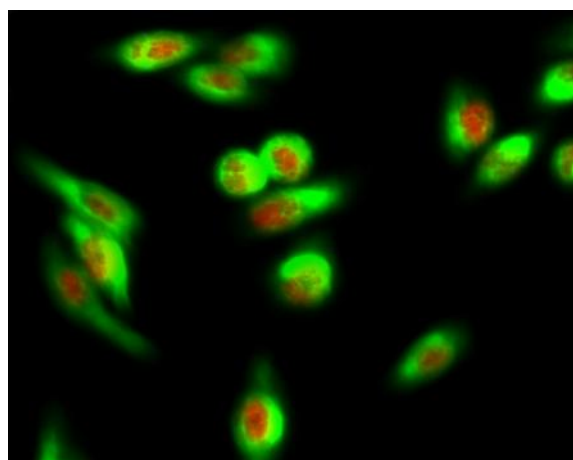
**Background :** myeloid/lymphoid or mixed-lineage leukemia; translocated to, 10(MLLT10) Homo sapiens This gene encodes a transcription factor and has been identified as a partner gene involved in several chromosomal rearrangements resulting in various leukemias. Multiple transcript variants encoding different isoforms have been found for this gene. [provided by RefSeq, Sep 2010],

**Function :** disease:A chromosomal aberration involving MLLT10 is associated with acute leukemias. Translocation t(10;11)(p12;q23) with MLL/HRX. The result is a rogue activator protein.,disease:A chromosomal aberration involving MLLT10 is associated with diffuse histiocytic lymphomas. Translocation t(10;11)(p13;q14) with PICALM.,PTM:Phosphorylated upon DNA damage, probably by ATM or ATR.,similarity:Contains 2 PHD-type zinc fingers.,tissue specificity:Expressed abundantly in testis.,

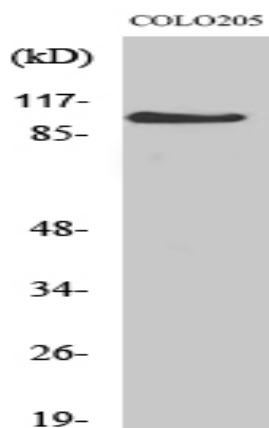
**Subcellular Location :** Nucleus .

**Expression :** Expressed abundantly in testis.

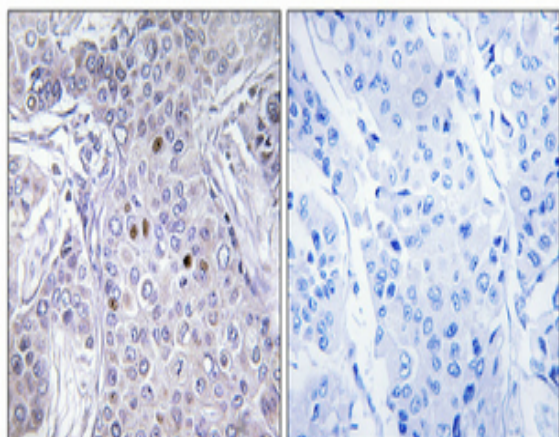
## Products Images



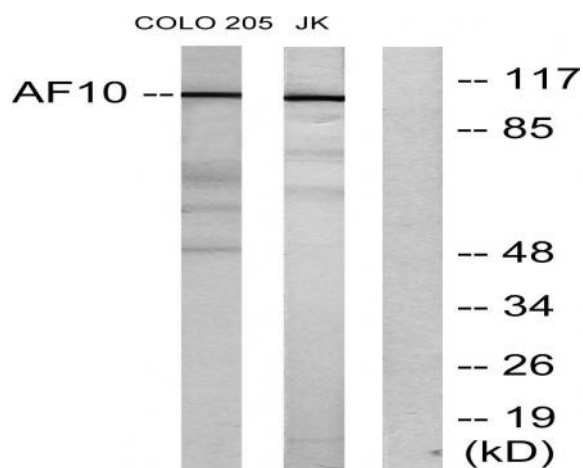
Immunofluorescence analysis of HeLa cell. 1,AF-10 Polyclonal Antibody(red) was diluted at 1:200(4° overnight). COX IV Monoclonal Antibody(6C8)(green) was diluted at 1:200(4° overnight). 2, Goat Anti Rabbit Alexa Fluor 594 Catalog:RS3611 was diluted at 1:1000(room temperature, 50min). Goat Anti Mouse Alexa Fluor 488 Catalog:RS3208 was diluted at 1:1000(room temperature, 50min).



Western Blot analysis of various cells using AF-10 Polyclonal Antibody diluted at 1:1000



Immunohistochemical analysis of paraffin-embedded Human breast cancer. Antibody was diluted at 1:100(4° overnight). High-pressure and temperature Tris-EDTA,pH8.0 was used for antigen retrieval. Negative contrl (right) obtaned from antibody was pre-absorbed by immunogen peptide.



Western blot analysis of lysates from COLO205 and Jurkat cells, using AF10 Antibody. The lane on the right is blocked with the synthesized peptide.