

ALK Polyclonal Antibody

| | |
|------------------------------|---|
| Catalog No : | YT0195 |
| Reactivity : | Human;Mouse |
| Applications : | WB;IHC;IF;ELISA |
| Target : | ALK |
| Fields : | >>Pathways in cancer;>>Non-small cell lung cancer;>>PD-L1 expression and PD-1 checkpoint pathway in cancer |
| Gene Name : | ALK |
| Protein Name : | ALK tyrosine kinase receptor |
| Human Gene Id : | 238 |
| Human Swiss Prot No : | Q9UM73 |
| Mouse Swiss Prot No : | P97793 |
| Immunogen : | The antiserum was produced against synthesized peptide derived from human ALK. AA range:1570-1619 |
| Specificity : | ALK Polyclonal Antibody detects endogenous levels of ALK protein. |
| Formulation : | Liquid in PBS containing 50% glycerol, 0.5% BSA and 0.02% sodium azide. |
| Source : | Polyclonal, Rabbit,IgG |
| Dilution : | WB 1:500 - 1:2000. IHC 1:100 - 1:300. IF 1:200 - 1:1000. ELISA: 1:20000. Not yet tested in other applications. |
| Purification : | The antibody was affinity-purified from rabbit antiserum by affinity-chromatography using epitope-specific immunogen. |
| Concentration : | 1 mg/ml |

Storage Stability : -15°C to -25°C/1 year(Do not lower than -25°C)

Observed Band : 150-240kD

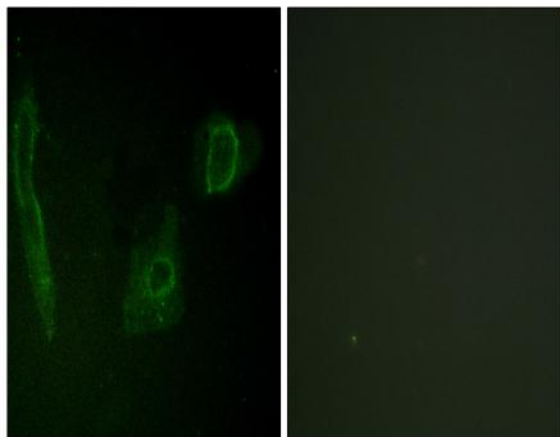
Background : This gene encodes a receptor tyrosine kinase, which belongs to the insulin receptor superfamily. This protein comprises an extracellular domain, an hydrophobic stretch corresponding to a single pass transmembrane region, and an intracellular kinase domain. It plays an important role in the development of the brain and exerts its effects on specific neurons in the nervous system. This gene has been found to be rearranged, mutated, or amplified in a series of tumours including anaplastic large cell lymphomas, neuroblastoma, and non-small cell lung cancer. The chromosomal rearrangements are the most common genetic alterations in this gene, which result in creation of multiple fusion genes in tumourigenesis, including ALK (chromosome 2)/EML4 (chromosome 2), ALK/RANBP2 (chromosome 2), ALK/ATIC (chromosome 2), ALK/TFG (chromosome 3), ALK/NPM1 (chromosome 5), ALK/SQSTM1 (chromosome

Function : catalytic activity:ATP + a [protein]-L-tyrosine = ADP + a [protein]-L-tyrosine phosphate.,disease:A chromosomal aberration involving ALK is associated with anaplastic large-cell lymphoma (ALCL). Translocation t(2;17)(p23;q25) with ALO17.,disease:A chromosomal aberration involving ALK is associated with inflammatory myofibroblastic tumors (IMTs). Translocation t(2;11)(p23;p15) with CARS; translocation t(2;4)(p23;q21) with SEC31A.,disease:A chromosomal aberration involving ALK is found in a form of non-Hodgkin lymphoma. Translocation t(2;5)(p23;q35) with NPM1. The resulting chimeric NPM1-ALK protein homodimerize and the kinase becomes constitutively activated. The constitutively active fusion proteins are responsible for 5-10% of non-Hodgkin lymphomas.,function:Orphan receptor with a tyrosine-protein kinase activity. Appears to play an important role in the normal development and function

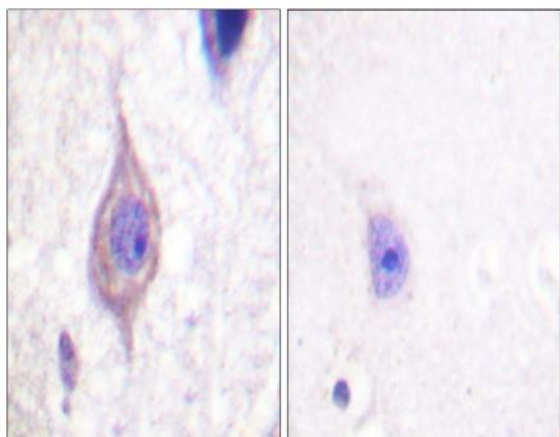
Subcellular Location : Cell membrane ; Single-pass type I membrane protein . Membrane attachment is essential for promotion of neuron-like differentiation and cell proliferation arrest through specific activation of the MAP kinase pathway. .

Expression : Expressed in brain and CNS. Also expressed in the small intestine and testis, but not in normal lymphoid cells.

Products Images



Immunofluorescence analysis of HeLa cells, using ALK Antibody. The picture on the right is blocked with the synthesized peptide.



Immunohistochemistry analysis of paraffin-embedded human brain tissue, using ALK Antibody. The picture on the right is blocked with the synthesized peptide.