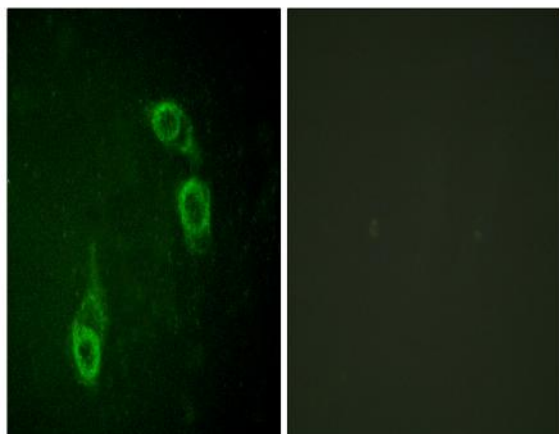


APC1 Polyclonal Antibody

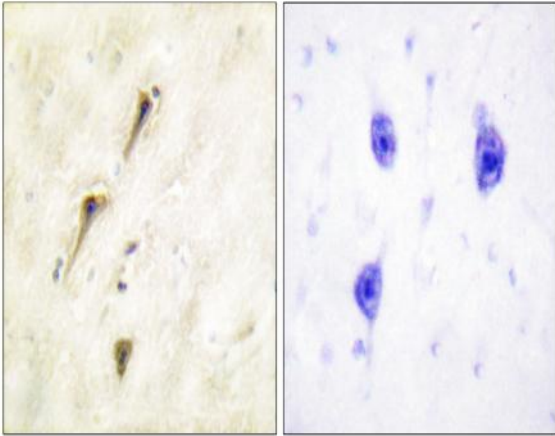
| | |
|------------------------------|--|
| Catalog No : | YT0259 |
| Reactivity : | Human;Mouse;Rat |
| Applications : | IHC;IF;ELISA |
| Target : | APC1 |
| Fields : | >>Cell cycle;>>Oocyte meiosis;>>Ubiquitin mediated proteolysis;>>Progesterone-mediated oocyte maturation;>>Human T-cell leukemia virus 1 infection |
| Gene Name : | ANAPC1 |
| Protein Name : | Anaphase-promoting complex subunit 1 |
| Human Gene Id : | 64682 |
| Human Swiss Prot No : | Q9H1A4 |
| Mouse Gene Id : | 17222 |
| Mouse Swiss Prot No : | P53995 |
| Immunogen : | The antiserum was produced against synthesized peptide derived from human APC1. AA range:654-703 |
| Specificity : | APC1 Polyclonal Antibody detects endogenous levels of APC1 protein. |
| Formulation : | Liquid in PBS containing 50% glycerol, 0.5% BSA and 0.02% sodium azide. |
| Source : | Polyclonal, Rabbit,IgG |
| Dilution : | IHC 1:100 - 1:300. IF 1:200 - 1:1000. ELISA: 1:10000. Not yet tested in other applications. |
| Purification : | The antibody was affinity-purified from rabbit antiserum by affinity-chromatography using epitope-specific immunogen. |

| | |
|-------------------------------|---|
| Concentration : | <u>1 mg/ml</u> |
| Storage Stability : | <u>-15°C to -25°C/1 year(Do not lower than -25°C)</u> |
| Molecularweight : | <u>217kD</u> |
| Cell Pathway : | <u>Cell_Cycle_G1S;Cell_Cycle_G2M_DNA;Oocyte meiosis;Ubiquitin mediated proteolysis;Progesterone-mediated oocyte maturation;</u> |
| Background : | <u>This gene encodes a subunit of the anaphase-promoting complex. This complex is an E3 ubiquitin ligase that regulates progression through the metaphase to anaphase portion of the cell cycle by ubiquitinating proteins which targets them for degradation. [provided by RefSeq, Dec 2011],</u> |
| Function : | <u>function:Component of the anaphase promoting complex/cyclosome (APC/C), a cell cycle-regulated E3 ubiquitin ligase that controls progression through mitosis and the G1 phase of the cell cycle.,pathway:Protein modification; protein ubiquitination.,PTM:Phosphorylated. Phosphorylation on Ser-355 occurs specifically during mitosis.,similarity:Belongs to the APC1 family.,similarity:Contains 4 PC repeats.,subunit:The APC/C is composed of at least 11 subunits.,</u> |
| Subcellular Location : | <u>nucleoplasm,anaphase-promoting complex,cytosol,</u> |
| Expression : | <u>Colon,Epithelium,Ovary,Placenta,</u> |

Products Images



Immunofluorescence analysis of HepG2 cells, using APC1 Antibody. The picture on the right is blocked with the synthesized peptide.



Immunohistochemistry analysis of paraffin-embedded human brain tissue, using APC1 Antibody. The picture on the right is blocked with the synthesized peptide.