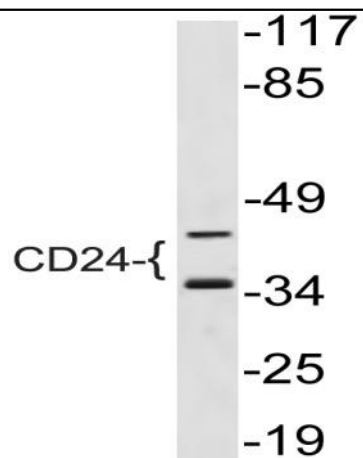


## CD24 Polyclonal Antibody

<b>Catalog No :</b>	YT0741
<b>Reactivity :</b>	Human;Mouse;Rat
<b>Applications :</b>	WB;ELISA
<b>Target :</b>	CD24
<b>Fields :</b>	>>Hematopoietic cell lineage
<b>Gene Name :</b>	CD24
<b>Protein Name :</b>	Signal transducer CD24
<b>Human Gene Id :</b>	100133941
<b>Human Swiss Prot No :</b>	P25063
<b>Mouse Gene Id :</b>	12484
<b>Mouse Swiss Prot No :</b>	P24807
<b>Rat Gene Id :</b>	25145
<b>Rat Swiss Prot No :</b>	Q07490
<b>Immunogen :</b>	The antiserum was produced against synthesized peptide derived from human CD24. AA range:14-63
<b>Specificity :</b>	CD24 Polyclonal Antibody detects endogenous levels of CD24 protein.
<b>Formulation :</b>	Liquid in PBS containing 50% glycerol, 0.5% BSA and 0.02% sodium azide.
<b>Source :</b>	Polyclonal, Rabbit,IgG
<b>Dilution :</b>	WB 1:500 - 1:2000. ELISA: 1:10000. Not yet tested in other applications.

<b>Purification :</b>	The antibody was affinity-purified from rabbit antiserum by affinity-chromatography using epitope-specific immunogen.
<b>Concentration :</b>	1 mg/ml
<b>Storage Stability :</b>	-15°C to -25°C/1 year(Do not lower than -25°C)
<b>Observed Band :</b>	35,45kD
<b>Background :</b>	<p>This gene encodes a sialoglycoprotein that is expressed on mature granulocytes and B cells and modulates growth and differentiation signals to these cells. The precursor protein is cleaved to a short 32 amino acid mature peptide which is anchored via a glycosyl phosphatidylinositol (GPI) link to the cell surface. This gene was missing from previous genome assemblies, but is properly located on chromosome 6. Non-transcribed pseudogenes have been designated on chromosomes 1, 15, 20, and Y. Alternative splicing results in multiple transcript variants. [provided by RefSeq, Apr 2014],</p>
<b>Function :</b>	<p>disease:Genetic variations in CD24 are involved in multiple sclerosis susceptibility (MS) [MIM:126200]. MS is a neurodegenerative disorder characterized by the gradual accumulation of focal plaques of demyelination particularly in the periventricular areas of the brain. Peripheral nerves are not affected. Onset usually in third or fourth decade with intermittent progression over an extended period. The cause is still uncertain.,function:Modulates B-cell activation responses. Signaling could be triggered by the binding of a lectin-like ligand to the CD24 carbohydrates, and transduced by the release of second messengers derived from the GPI-anchor. Promotes AG-dependent proliferation of B-cells, and prevents their terminal differentiation into antibody-forming cells.,induction:Expression is lost when primary B-cells are induced to differentiate in antibody-forming cells.,PTM:Extensively O-</p>
<b>Subcellular Location :</b>	Cell membrane; Lipid-anchor, GPI-anchor.
<b>Expression :</b>	B-cells. Expressed in a number of B-cell lines including P32/ISH and Namalwa. Expressed in erythroleukemia cell and small cell lung carcinoma cell lines. Also expressed on the surface of T-cells.

## Products Images



Western blot analysis of lysate from NIH/3T3 cells, using CD24 antibody.