

AR α 2B Polyclonal Antibody

Catalog No :	YT0299
Reactivity :	Human;Rat;Mouse;
Applications :	IF;ELISA
Target :	AR α 2B
Fields :	>>cGMP-PKG signaling pathway;>>Neuroactive ligand-receptor interaction
Gene Name :	ADRA2B
Protein Name :	Alpha-2B adrenergic receptor
Human Gene Id :	151
Human Swiss Prot No :	P18089
Mouse Swiss Prot No :	P30545
Immunogen :	The antiserum was produced against synthesized peptide derived from human Adrenergic Receptor alpha-2B. AA range:161-210
Specificity :	AR α 2B Polyclonal Antibody detects endogenous levels of AR α 2B protein.
Formulation :	Liquid in PBS containing 50% glycerol, 0.5% BSA and 0.02% sodium azide.
Source :	Polyclonal, Rabbit,IgG
Dilution :	IF 1:200 - 1:1000. ELISA: 1:10000. Not yet tested in other applications.
Purification :	The antibody was affinity-purified from rabbit antiserum by affinity-chromatography using epitope-specific immunogen.
Concentration :	1 mg/ml
Storage Stability :	-15°C to -25°C/1 year(Do not lower than -25°C)

Molecularweight : 50kD

Cell Pathway : Neuroactive ligand-receptor interaction;

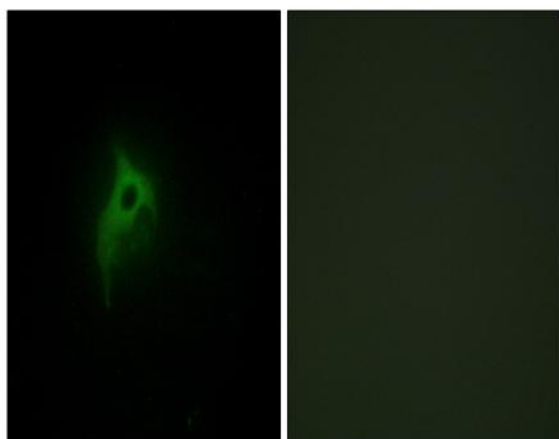
Background : This intronless gene encodes a seven-pass transmembrane protein. This protein is a member of a subfamily of G protein-coupled receptors that regulate neurotransmitter release from sympathetic nerves and from adrenergic neurons in the central nervous system. [provided by RefSeq, Apr 2014],

Function : function:Alpha-2 adrenergic receptors mediate the catecholamine-induced inhibition of adenylate cyclase through the action of G proteins. The rank order of potency for agonists of this receptor is clonidine > norepinephrine > epinephrine = oxymetazoline > dopamine > p-tyramine = phenylephrine > serotonin > p-synephrine / p-octopamine. For antagonists, the rank order is yohimbine > chlorpromazine > phentolamine > mianserine > spiperone > prazosin > alprenolol > propranolol > pindolol.,polymorphism:A rare polymorphic framshift in position 451 produces a protein of 542 residues.,similarity:Belongs to the G-protein coupled receptor 1 family.,

Subcellular Location : Cell membrane ; Multi-pass membrane protein . Interaction with RAB26, GGA1, GGA2 and GGA3 mediates transport from the Golgi to the cell membrane. .

Expression : Pooled,

Products Images



Immunofluorescence analysis of HepG2 cells, using Adrenergic Receptor alpha-2B Antibody. The picture on the right is blocked with the synthesized peptide.