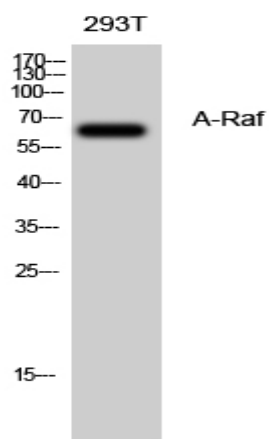


A-Raf Polyclonal Antibody

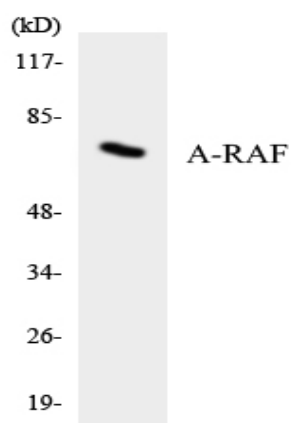
| | |
|------------------------------|--|
| Catalog No : | YT0304 |
| Reactivity : | Human;Mouse;Rat;Monkey |
| Applications : | WB;ELISA |
| Target : | A-Raf |
| Fields : | >>EGFR tyrosine kinase inhibitor resistance;>>Endocrine resistance;>>MAPK signaling pathway;>>ErbB signaling pathway;>>FoxO signaling pathway;>>Vascular smooth muscle contraction;>>Natural killer cell mediated cytotoxicity;>>Long-term potentiation;>>Serotonergic synapse;>>Long-term depression;>>Regulation of actin cytoskeleton;>>Insulin signaling pathway;>>Progesterone-mediated oocyte maturation;>>Parathyroid hormone synthesis, secretion and action;>>Alzheimer disease;>>Pathways of neurodegeneration - multiple diseases;>>Alcoholism;>>Hepatitis C;>>Hepatitis B;>>Pathways in cancer;>>Proteoglycans in cancer;>>Chemical carcinogenesis - reactive oxygen species;>>Colorectal cancer;>>Renal cell carcinoma;>>Pancreatic cancer;>>Endometrial cancer;>>Glioma;>>Prostate cancer;>>Melanoma;>>Bladder cancer;>>Chronic myeloid leukemia;>>Acute myeloid leukemia;>>Non-small cell lung cancer;>>Breast cancer;>>Hepatocellular carcinoma;>>Gastric cancer |
| Gene Name : | ARAF |
| Protein Name : | Serine/threonine-protein kinase A-Raf |
| Human Gene Id : | 369 |
| Human Swiss Prot No : | P10398 |
| Mouse Gene Id : | 11836 |
| Mouse Swiss Prot No : | P04627 |
| Rat Gene Id : | 64363 |
| Rat Swiss Prot No : | P14056 |

| | |
|-------------------------------|---|
| Immunogen : | The antiserum was produced against synthesized peptide derived from human A-RAF. AA range:241-290 |
| Specificity : | A-Raf Polyclonal Antibody detects endogenous levels of A-Raf protein. |
| Formulation : | Liquid in PBS containing 50% glycerol, 0.5% BSA and 0.02% sodium azide. |
| Source : | Polyclonal, Rabbit,IgG |
| Dilution : | WB 1:500 - 1:2000. ELISA: 1:20000. Not yet tested in other applications. |
| Purification : | The antibody was affinity-purified from rabbit antiserum by affinity-chromatography using epitope-specific immunogen. |
| Concentration : | 1 mg/ml |
| Storage Stability : | -15°C to -25°C/1 year(Do not lower than -25°C) |
| Observed Band : | 68kD |
| Cell Pathway : | Regulation of Actin Dynamics; ErbB/HER; Cell Growth |
| Background : | This proto-oncogene belongs to the RAF subfamily of the Ser/Thr protein kinase family, and maybe involved in cell growth and development. Alternatively spliced transcript variants encoding different isoforms have been found for this gene.[provided by RefSeq, Jan 2012], |
| Function : | catalytic activity:ATP + a protein = ADP + a phosphoprotein.,cofactor:Binds 2 zinc ions per subunit.,function:Involved in the transduction of mitogenic signals from the cell membrane to the nucleus.,similarity:Belongs to the protein kinase superfamily.,similarity:Belongs to the protein kinase superfamily. TKL Ser/Thr protein kinase family. RAF subfamily.,similarity:Contains 1 phorbol-ester/DAG-type zinc finger.,similarity:Contains 1 protein kinase domain.,similarity:Contains 1 RBD (Ras-binding) domain.,subunit:Interacts with TH1L/NELFD.,tissue specificity:Predominantly in urogenital tissues., |
| Subcellular Location : | intracellular,mitochondrion,cytosol, |
| Expression : | Predominantly in urogenital tissues. |

Products Images



Western Blot analysis of 293T cells using A-Raf Polyclonal Antibody diluted at 1:500



Western blot analysis of the lysates from HeLa cells using A-RAF antibody.