

ARHGEF19 Polyclonal Antibody

| | |
|------------------------------|---|
| Catalog No : | YT0323 |
| Reactivity : | Human;Mouse |
| Applications : | WB;IHC;IF;ELISA |
| Target : | ARHGEF19 |
| Gene Name : | ARHGEF19 |
| Protein Name : | Rho guanine nucleotide exchange factor 19 |
| Human Gene Id : | 128272 |
| Human Swiss Prot No : | Q8IW93 |
| Mouse Swiss Prot No : | Q8BWA8 |
| Immunogen : | The antiserum was produced against synthesized peptide derived from human ARHGEF19. AA range:251-300 |
| Specificity : | ARHGEF19 Polyclonal Antibody detects endogenous levels of ARHGEF19 protein. |
| Formulation : | Liquid in PBS containing 50% glycerol, 0.5% BSA and 0.02% sodium azide. |
| Source : | Polyclonal, Rabbit,IgG |
| Dilution : | WB 1:500 - 1:2000. IHC 1:100 - 1:300. ELISA: 1:20000.. IF 1:50-200 |
| Purification : | The antibody was affinity-purified from rabbit antiserum by affinity-chromatography using epitope-specific immunogen. |
| Concentration : | 1 mg/ml |
| Storage Stability : | -15°C to -25°C/1 year(Do not lower than -25°C) |
| Observed Band : | 90kD |

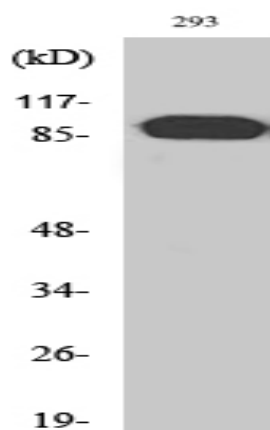
Cell Pathway : Regulation of Actin Dynamics; AMPK

Background : Guanine nucleotide exchange factors (GEFs) such as ARHGEF19 accelerate the GTPase activity of Rho GTPases (see RHOA, MIM 165390).[supplied by OMIM, Dec 2008],

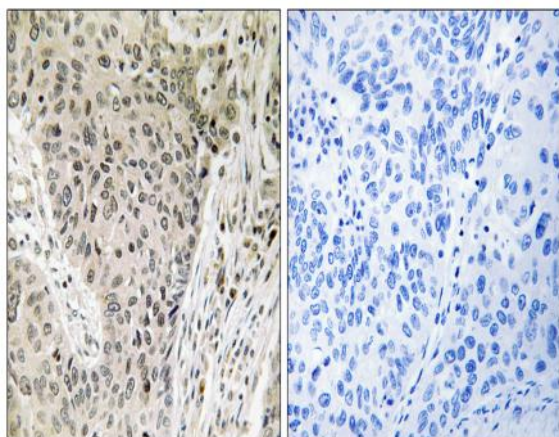
Function : function:Acts as guanine nucleotide exchange factor (GEF) for RhoA GTPase.,similarity:Contains 1 DH (DBL-homology) domain.,similarity:Contains 1 PH domain.,similarity:Contains 1 SH3 domain.,

Expression : Colon,Pancreas,Tongue,

Products Images



Western Blot analysis of various cells using ARHGEF19 Polyclonal Antibody



Immunohistochemistry analysis of paraffin-embedded human lung carcinoma, using ARHGEF19 Antibody. The picture on the right is blocked with the synthesized peptide.