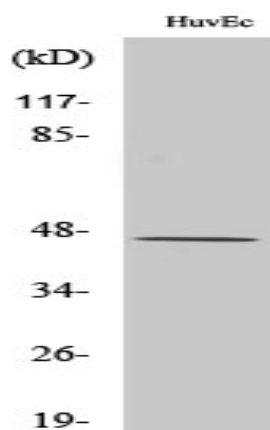


**ARP-1 Polyclonal Antibody**

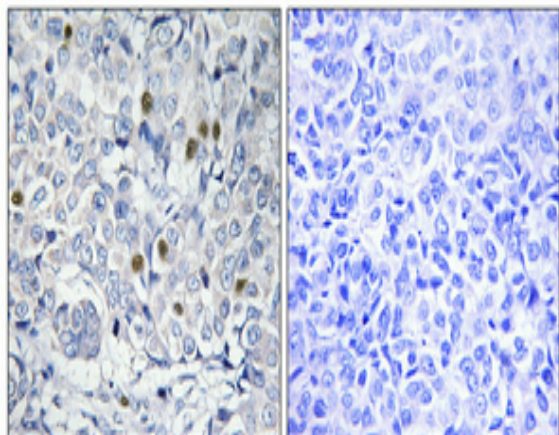
<b>Catalog No :</b>	YT0335
<b>Reactivity :</b>	Human;Mouse;Rat
<b>Applications :</b>	WB;IHC;IF;ELISA
<b>Target :</b>	ARP-1
<b>Gene Name :</b>	NR2F2
<b>Protein Name :</b>	COUP transcription factor 2
<b>Human Gene Id :</b>	7026
<b>Human Swiss Prot No :</b>	P24468
<b>Mouse Gene Id :</b>	11819
<b>Mouse Swiss Prot No :</b>	P43135
<b>Rat Gene Id :</b>	113984
<b>Rat Swiss Prot No :</b>	O09018
<b>Immunogen :</b>	The antiserum was produced against synthesized peptide derived from human COT2. AA range:1-50
<b>Specificity :</b>	ARP-1 Polyclonal Antibody detects endogenous levels of ARP-1 protein.
<b>Formulation :</b>	Liquid in PBS containing 50% glycerol, 0.5% BSA and 0.02% sodium azide.
<b>Source :</b>	Polyclonal, Rabbit,IgG
<b>Dilution :</b>	WB 1:500 - 1:2000. IHC 1:100 - 1:300. IF 1:200 - 1:1000. ELISA: 1:10000. Not yet tested in other applications.
<b>Purification :</b>	The antibody was affinity-purified from rabbit antiserum by affinity-chromatography using epitope-specific immunogen.

<b>Concentration :</b>	1 mg/ml
<b>Storage Stability :</b>	-15°C to -25°C/1 year(Do not lower than -25°C)
<b>Observed Band :</b>	45kD
<b>Background :</b>	This gene encodes a member of the steroid thyroid hormone superfamily of nuclear receptors. The encoded protein is a ligand inducible transcription factor that is involved in the regulation of many different genes. Alternate splicing results in multiple transcript variants. [provided by RefSeq, Mar 2010],
<b>Function :</b>	function:Regulation of the apolipoprotein A-I gene transcription. Binds to DNA site A.,similarity:Belongs to the nuclear hormone receptor family.,similarity:Belongs to the nuclear hormone receptor family. NR2 subfamily.,similarity:Contains 1 nuclear receptor DNA-binding domain.,subunit:Interacts with SQSTM1 (By similarity). Binds DNA as a homodimer.,tissue specificity:Found in all tissues.,
<b>Subcellular Location :</b>	Nucleus.
<b>Expression :</b>	Ubiquitous. Expressed in the stromal cells of developing fetal ovaries (PubMed:29478779).

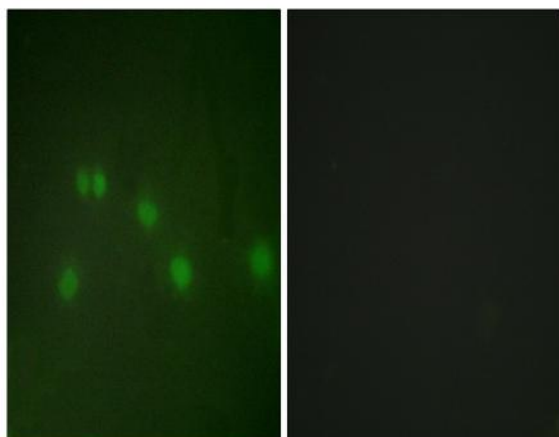
## Products Images



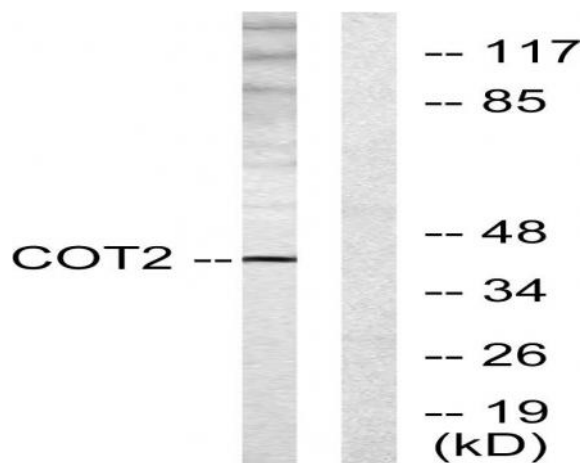
Western Blot analysis of various cells using ARP-1 Polyclonal Antibody cells nucleus extracted by Minute TM Cytoplasmic and Nuclear Fractionation kit (SC-003, Inventbiotech, MN, USA).



Immunohistochemical analysis of paraffin-embedded Human breast cancer. Antibody was diluted at 1:100(4° overnight). High-pressure and temperature Tris-EDTA,pH8.0 was used for antigen retrieval. Negative contrl (right) obtaned from antibody was pre-absorbed by immunogen peptide.



Immunofluorescence analysis of HUVEC cells, using COT2 Antibody. The picture on the right is blocked with the synthesized peptide.



Western blot analysis of lysates from HUVEC cells, using COT2 Antibody. The lane on the right is blocked with the synthesized peptide.