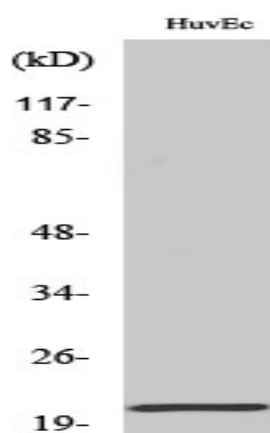


Cardiotrophin-1 Polyclonal Antibody

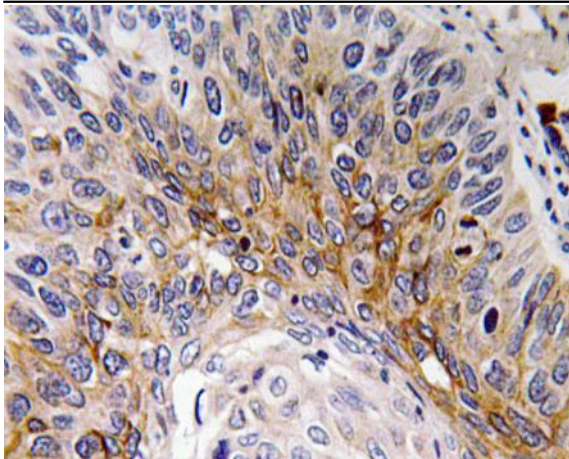
Catalog No :	YT0638
Reactivity :	Human;Mouse;Rat
Applications :	WB;IHC;IF;ELISA
Target :	Cardiotrophin-1
Fields :	>>Cytokine-cytokine receptor interaction;>>JAK-STAT signaling pathway
Gene Name :	CTF1
Protein Name :	Cardiotrophin-1
Human Gene Id :	1489
Human Swiss Prot No :	Q16619
Mouse Gene Id :	13019
Mouse Swiss Prot No :	Q60753
Rat Gene Id :	29201
Rat Swiss Prot No :	Q63086
Immunogen :	The antiserum was produced against synthesized peptide derived from human Cardiotrophin-1. AA range:31-80
Specificity :	Cardiotrophin-1 Polyclonal Antibody detects endogenous levels of Cardiotrophin-1 protein.
Formulation :	Liquid in PBS containing 50% glycerol, 0.5% BSA and 0.02% sodium azide.
Source :	Polyclonal, Rabbit,IgG
Dilution :	WB 1:500 - 1:2000. IHC 1:100 - 1:300. ELISA: 1:40000.. IF 1:50-200

Purification :	The antibody was affinity-purified from rabbit antiserum by affinity-chromatography using epitope-specific immunogen.
Concentration :	1 mg/ml
Storage Stability :	-15°C to -25°C/1 year(Do not lower than -25°C)
Observed Band :	21kD
Cell Pathway :	Cytokine-cytokine receptor interaction;Jak_STAT;
Background :	The protein encoded by this gene is a secreted cytokine that induces cardiac myocyte hypertrophy in vitro. It has been shown to bind and activate the ILST/gp130 receptor. Two transcript variants encoding different isoforms have been found for this gene. [provided by RefSeq, Dec 2008],
Function :	function:Induces cardiac myocyte hypertrophy in vitro. Binds to and activates the ILST/gp130 receptor.,similarity:Belongs to the IL-6 superfamily.,tissue specificity:Highly expressed in heart, skeletal muscle, prostate and ovary. Lower levels in lung, kidney, pancreas, thymus, testis and small intestine. Little or no expression in brain, placenta, liver, spleen, colon or peripheral blood leukocytes.,
Subcellular Location :	Secreted.
Expression :	Highly expressed in heart, skeletal muscle, prostate and ovary. Lower levels in lung, kidney, pancreas, thymus, testis and small intestine. Little or no expression in brain, placenta, liver, spleen, colon or peripheral blood leukocytes.

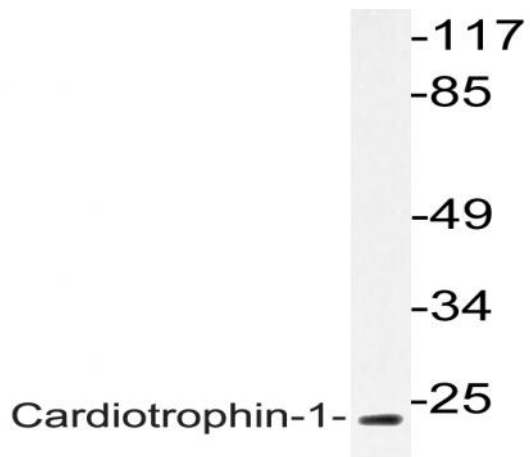
Products Images



Western Blot analysis of various cells using Cardiostrophin-1 Polyclonal Antibody



Immunohistochemistry analysis of Cardiotrophin-1 antibody in paraffin-embedded human lung carcinoma tissue.



Western blot analysis of lysate from HUVEC cells, using Cardiotrophin-1 antibody.