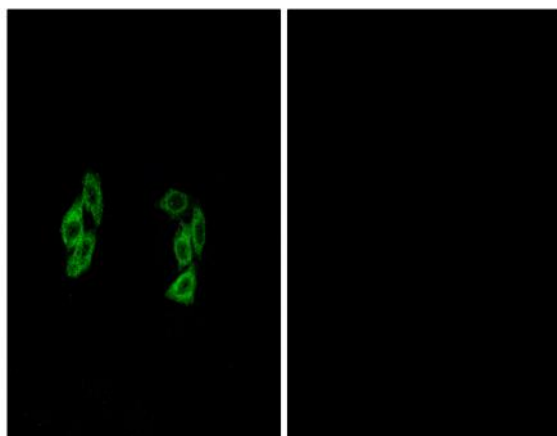


Casein Kinase I α 1/1L Polyclonal Antibody

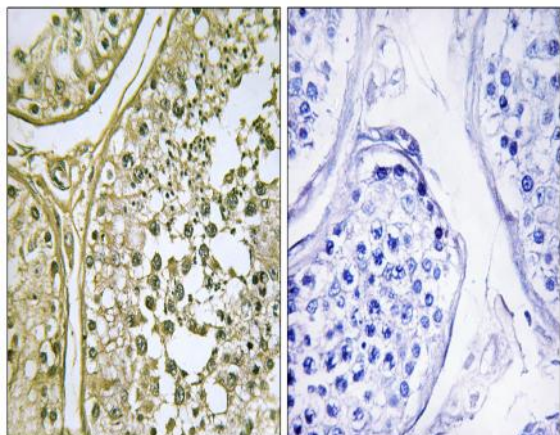
Catalog No :	YT0642
Reactivity :	Human;Mouse;Rat
Applications :	IHC;IF;WB;ELISA
Target :	Casein Kinase I α 1/1L
Fields :	>>Wnt signaling pathway;>>Hedgehog signaling pathway;>>Alzheimer disease;>>Pathways of neurodegeneration - multiple diseases;>>Human papillomavirus infection;>>Breast cancer;>>Hepatocellular carcinoma;>>Gastric cancer
Gene Name :	CSNK1A1/CSNK1A1L
Protein Name :	Casein kinase I isoform alpha/Casein kinase I isoform alpha-like
Human Gene Id :	122011/1452
Human Swiss Prot No :	Q8N752/P48729
Rat Gene Id :	113927
Rat Swiss Prot No :	P97633
Immunogen :	The antiserum was produced against synthesized peptide derived from human CKI-alpha1/L. AA range:141-190
Specificity :	Casein Kinase I α 1/1L Polyclonal Antibody detects endogenous levels of Casein Kinase I α 1/1L protein.
Formulation :	Liquid in PBS containing 50% glycerol, 0.5% BSA and 0.02% sodium azide.
Source :	Polyclonal, Rabbit,IgG
Dilution :	WB 1:500-2000 IHC 1:100 - 1:300. IF 1:200 - 1:1000. ELISA: 1:20000. Not yet tested in other applications.

Purification :	The antibody was affinity-purified from rabbit antiserum by affinity-chromatography using epitope-specific immunogen.
Concentration :	1 mg/ml
Storage Stability :	-15°C to -25°C/1 year(Do not lower than -25°C)
Observed Band :	30kD
Cell Pathway :	WNT;WNT-T CELLHedgehog;
Background :	catalytic activity:ATP + a protein = ADP + a phosphoprotein.,function:Casein kinases are operationally defined by their preferential utilization of acidic proteins such as caseins as substrates. It can phosphorylate a large number of proteins. Participates in Wnt signaling.,similarity:Belongs to the protein kinase superfamily. CK1 Ser/Thr protein kinase family. Casein kinase I subfamily.,similarity:Contains 1 protein kinase domain.,
Function :	catalytic activity:ATP + a protein = ADP + a phosphoprotein.,function:Casein kinases are operationally defined by their preferential utilization of acidic proteins such as caseins as substrates. It can phosphorylate a large number of proteins. Participates in Wnt signaling.,similarity:Belongs to the protein kinase superfamily. CK1 Ser/Thr protein kinase family. Casein kinase I subfamily.,similarity:Contains 1 protein kinase domain.,
Subcellular Location :	Cytoplasm .
Expression :	Testis,

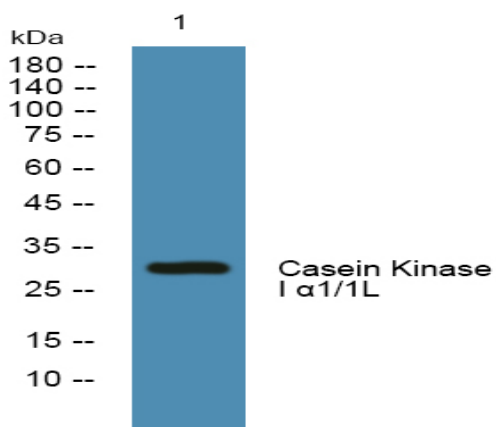
Products Images



Immunofluorescence analysis of A549 cells, using CKI-alpha1/L Antibody. The picture on the right is blocked with the synthesized peptide.



Immunohistochemistry analysis of paraffin-embedded human testis tissue, using CKI-alpha1/L Antibody. The picture on the right is blocked with the synthesized peptide.



Western blot analysis of lysates from SH-SY5Y cells, primary antibody was diluted at 1:1000, 4° over night