

Claudin-2 Mouse Monoclonal Antibody(8H11)

Catalog No :	YM3796
Reactivity :	Human;Mouse;Rat
Applications :	WB;IF;IHC
Target :	Claudin-2
Fields :	>>Cell adhesion molecules;>>Tight junction;>>Leukocyte transendothelial migration;>>Pathogenic Escherichia coli infection;>>Hepatitis C
Gene Name :	CLDN2 PSEC0059 SP82 UNQ705/PRO1356
Protein Name :	Claudin-2
Human Gene Id :	9075
Human Swiss Prot No :	P57739
Immunogen :	Synthesized peptide derived from human Claudin-2
Specificity :	This antibody detects endogenous levels of human Claudin-2
Formulation :	Liquid in PBS containing 50% glycerol, 0.5% BSA and 0.02% sodium azide.
Source :	Monoclonal, Mouse
Dilution :	WB 1:500-2000; IF ICC 1:200-400;IHC
Purification :	The antibody was affinity-purified from mouse ascites by affinity-chromatography using specific immunogen.
Concentration :	1 mg/ml
Storage Stability :	-15°C to -25°C/1 year(Do not lower than -25°C)
Observed Band :	25kD

Background :

This gene product belongs to the claudin protein family whose members have been identified as major integral membrane proteins localized exclusively at tight junctions. Claudins are expressed in an organ-specific manner and regulate tissue-specific physiologic properties of tight junctions. This protein is expressed in the intestine. Alternatively spliced transcript variants with different 5' untranslated region have been found for this gene.[provided by RefSeq, Jan 2010],

Function :

function:Plays a major role in tight junction-specific obliteration of the intercellular space, through calcium-independent cell-adhesion activity.,similarity:Belongs to the claudin family.,subunit:Can form homo- and heteropolymers with other CLDN. Homopolymers interact with CLDN3, but not CLDN1, homopolymers. Directly interacts with TJP1/ZO-1, TJP2/ZO-2 and TJP3/ZO-3.,

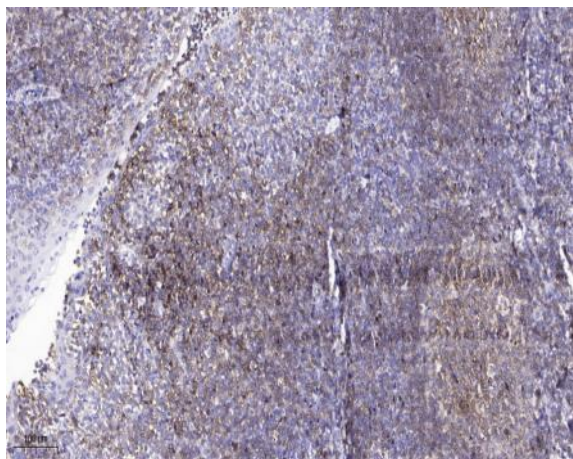
Subcellular Location :

Cell junction, tight junction . Cell membrane ; Multi-pass membrane protein .

Expression :

Colon,Colon epithelium,Kidney,Skin,Teratocarcinoma,Thalamus,

Products Images



Immunohistochemical analysis of paraffin-embedded human tonsil. 1, Antibody was diluted at 1:200(4° overnight). 2, Tris-EDTA,pH9.0 was used for antigen retrieval. 3,Secondary antibody was diluted at 1:200(room temperature, 45min).