

AS250 Polyclonal Antibody

| | |
|------------------------------|---|
| Catalog No : | YT0364 |
| Reactivity : | Human;Mouse |
| Applications : | WB;IHC;IF;ELISA |
| Target : | AS250 |
| Fields : | >>Ras signaling pathway |
| Gene Name : | RALGAPA2 |
| Protein Name : | Ral GTPase-activating protein subunit alpha-2 |
| Human Gene Id : | 57186 |
| Human Swiss Prot No : | Q2PPJ7 |
| Mouse Gene Id : | 241694 |
| Mouse Swiss Prot No : | A3KGS3 |
| Immunogen : | The antiserum was produced against synthesized peptide derived from human AS250. AA range:641-690 |
| Specificity : | AS250 Polyclonal Antibody detects endogenous levels of AS250 protein. |
| Formulation : | Liquid in PBS containing 50% glycerol, 0.5% BSA and 0.02% sodium azide. |
| Source : | Polyclonal, Rabbit,IgG |
| Dilution : | WB 1:500 - 1:2000. IHC 1:100 - 1:300. IF 1:200 - 1:1000. ELISA: 1:10000. Not yet tested in other applications. |
| Purification : | The antibody was affinity-purified from rabbit antiserum by affinity-chromatography using epitope-specific immunogen. |
| Concentration : | 1 mg/ml |

Storage Stability : -15°C to -25°C/1 year(Do not lower than -25°C)

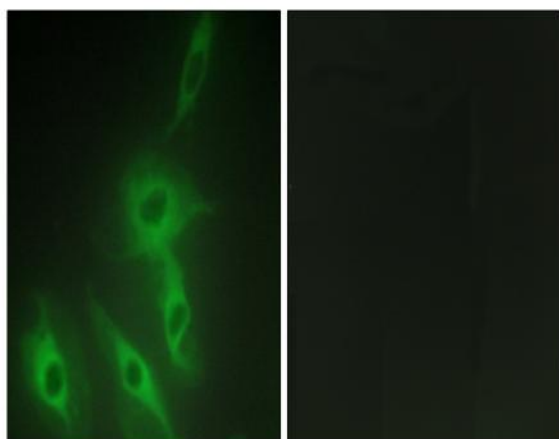
Observed Band : 210kD

Background : RALGAPA2 (Ral GTPase Activating Protein Catalytic Alpha Subunit 2) is a Protein Coding gene. Among its related pathways are Vesicle-mediated transport and Translocation of GLUT4 to the plasma membrane. GO annotations related to this gene include protein heterodimerization activity and GTPase activator activity. An important paralog of this gene is RAP1GAP.

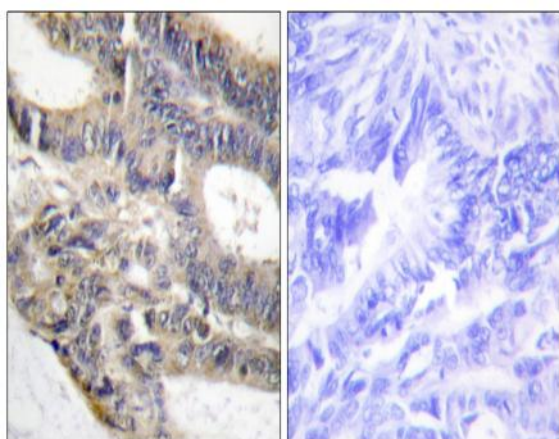
Function : regulation of small GTPase mediated signal transduction,

Subcellular Location : Cytoplasm .

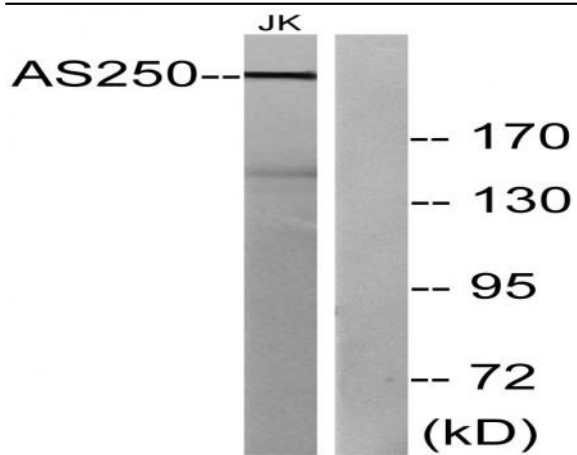
Products Images



Immunofluorescence analysis of HeLa cells, using AS250 Antibody. The picture on the right is blocked with the synthesized peptide.



Immunohistochemistry analysis of paraffin-embedded human colon carcinoma tissue, using AS250 Antibody. The picture on the right is blocked with the synthesized peptide.



Western blot analysis of lysates from Jurkat cells, using AS250 Antibody. The lane on the right is blocked with the synthesized peptide.