

**ATPBD3 Polyclonal Antibody**

<b>Catalog No :</b>	YT0414
<b>Reactivity :</b>	Human;Rat;Mouse;
<b>Applications :</b>	WB;ELISA
<b>Target :</b>	ATPBD3
<b>Fields :</b>	>>Sulfur relay system
<b>Gene Name :</b>	CTU1
<b>Protein Name :</b>	Cytoplasmic tRNA 2-thiolation protein 1
<b>Human Gene Id :</b>	90353
<b>Human Swiss Prot No :</b>	Q7Z7A3
<b>Mouse Swiss Prot No :</b>	Q99J10
<b>Immunogen :</b>	The antiserum was produced against synthesized peptide derived from human ATPBD3. AA range:291-340
<b>Specificity :</b>	ATPBD3 Polyclonal Antibody detects endogenous levels of ATPBD3 protein.
<b>Formulation :</b>	Liquid in PBS containing 50% glycerol, 0.5% BSA and 0.02% sodium azide.
<b>Source :</b>	Polyclonal, Rabbit,IgG
<b>Dilution :</b>	WB 1:500 - 1:2000. ELISA: 1:20000. Not yet tested in other applications.
<b>Purification :</b>	The antibody was affinity-purified from rabbit antiserum by affinity-chromatography using epitope-specific immunogen.
<b>Concentration :</b>	1 mg/ml
<b>Storage Stability :</b>	-15°C to -25°C/1 year(Do not lower than -25°C)

**Observed Band :** 36kD

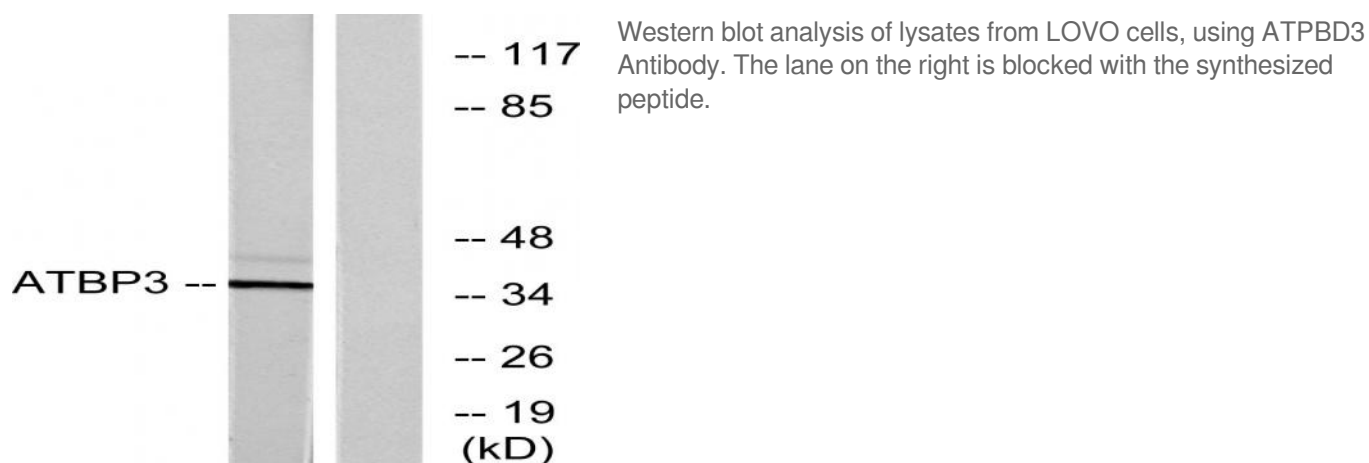
**Background :** function:Plays a central role in 2-thiolation of mcm(5)S(2)U at tRNA wobble positions of tRNA(Lys), tRNA(Glu) and tRNA(Gln). Directly binds tRNAs and probably acts by catalyzing adenylation of tRNAs, an intermediate required for 2-thiolation. It is unclear whether it acts as a sulfurtransferase that transfers sulfur from thiocarboxylated URM1 onto the uridine of tRNAs at wobble position.,pathway:tRNA modification; 5-methoxycarbonylmethyl-2-thiouridine-tRNA biosynthesis.,similarity:Belongs to the ttcA family. CTU1/NCS6/ATPBD3 subfamily.,subunit:Component of a complex at least composed of URM1, CTU2/NCS2 and ATPBD3/NCS6. May form a heterodimer with CTU2/NCS2.,

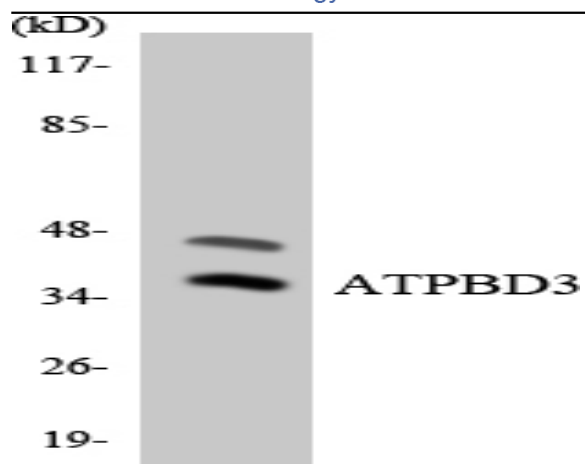
**Function :** function:Plays a central role in 2-thiolation of mcm(5)S(2)U at tRNA wobble positions of tRNA(Lys), tRNA(Glu) and tRNA(Gln). Directly binds tRNAs and probably acts by catalyzing adenylation of tRNAs, an intermediate required for 2-thiolation. It is unclear whether it acts as a sulfurtransferase that transfers sulfur from thiocarboxylated URM1 onto the uridine of tRNAs at wobble position.,pathway:tRNA modification; 5-methoxycarbonylmethyl-2-thiouridine-tRNA biosynthesis.,similarity:Belongs to the ttcA family. CTU1/NCS6/ATPBD3 subfamily.,subunit:Component of a complex at least composed of URM1, CTU2/NCS2 and ATPBD3/NCS6. May form a heterodimer with CTU2/NCS2.,

**Subcellular Location :** Cytoplasm.

**Expression :** Brain,Epithelium,Teratocarcinoma,

## Products Images





Western blot analysis of the lysates from 293 cells using ATPBD3 antibody.