

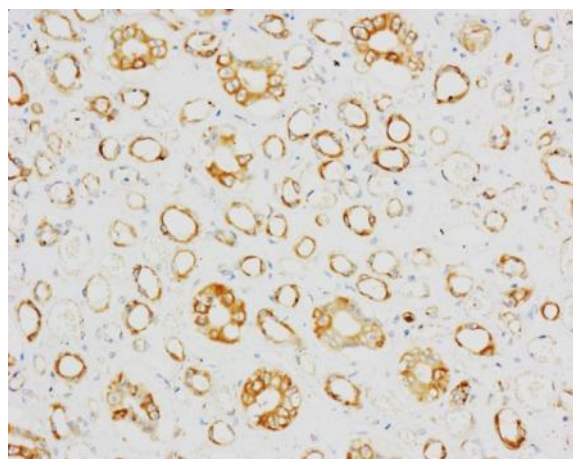
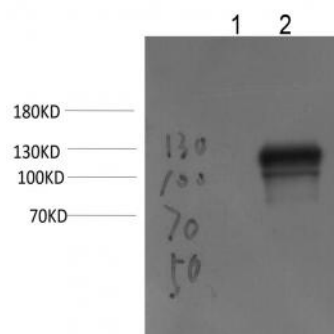
ACE2 Mouse mAb(2C1)

Catalog No :	YM3804
Reactivity :	Human;Mouse;Rat
Applications :	WB;IHC;IF
Target :	ACE2
Gene Name :	ACE2 UNQ868/PRO1885
Protein Name :	ACE2
Human Gene Id :	59272
Human Swiss Prot No :	Q9BYF1
Mouse Gene Id :	70008
Mouse Swiss Prot No :	Q8R0I0
Rat Gene Id :	302668
Rat Swiss Prot No :	Q5EGZ1
Immunogen :	Synthesized peptide derived from human ACE2
Specificity :	This antibody detects endogenous levels of ACE2 at Human, Mouse,Rat
Formulation :	Liquid in PBS containing 50% glycerol, and 0.02% sodium azide.
Source :	Mouse,monoclonal
Dilution :	WB 1:500-2000 IHC 1:50-200. IF 1:50-200
Purification :	The antibody was affinity-purified from mouse ascites by affinity-chromatography using epitope-specific immunogen.

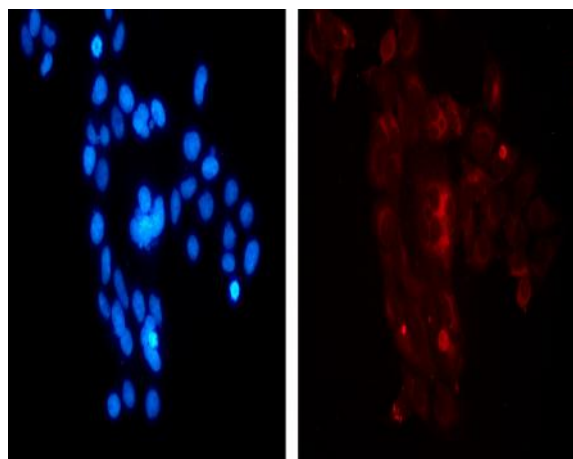
Concentration :	1 mg/ml
Storage Stability :	-15°C to -25°C/1 year(Do not lower than -25°C)
Observed Band :	120-135kD
Function :	<p>cofactor: Binds 1 chloride ion per subunit., cofactor: Binds 1 zinc ion per subunit., enzyme regulation: Activated by chloride and fluoride, but not bromide. Inhibited by MLN-4760, cFP_Leu, and EDTA, but not by the ACE inhibitors lisinopril, captopril and enalaprilat., function: Carboxypeptidase which converts angiotensin I to angiotensin 1-9, a peptide of unknown function, and angiotensin II to angiotensin 1-7, a vasodilator. Also able to hydrolyze apelin-13 and dynorphin-13 with high efficiency. May be an important regulator of heart function. In case of human coronaviruses SARS and HCoV-NL63 infections, serve as functional receptor for the spike glycoprotein of both coronaviruses., induction: Up-regulated in failing heart., PTM: N-glycosylation on Asn-90 may limit SARS infectivity., similarity: Belongs to the peptidase M2 family., subunit: Interacts with ITGB1. Interacts with SARS-CoV and HCoV-NL63</p>
Subcellular Location :	<p>[Processed angiotensin-converting enzyme 2]: Secreted .; Cell membrane ; Single-pass type I membrane protein . Cytoplasm . Cell projection, cilium . Apical cell membrane . Detected in both cell membrane and cytoplasm in neurons. .; [Isoform 2]: Apical cell membrane .</p>
Expression :	<p>Expressed in endothelial cells from small and large arteries, and in arterial smooth muscle cells (at protein level) (PubMed:15141377). Expressed in enterocytes of the small intestine, Leydig cells and Sertoli cells (at protein level) (PubMed:15141377). Expressed in the renal proximal tubule and the small intestine (at protein level) (PubMed:18424768). Expressed in heart, kidney, testis, and gastrointestinal system (at protein level) (PubMed:10969042, PubMed:10924499, PubMed:15231706, PubMed:12459472, PubMed:15671045, PubMed:32715618, PubMed:32170560). In lung, expressed at low levels in some alveolar type 2 cells, the expression seems to be individual-specific (at protein level) (PubMed:32425701, PubMed:15141377, PubMed:32715618, PubMed:32170560, PubMed:33432184). Expressed in nasal epith</p>

Products Images

Western blot analysis of 1 293T cell, 2 293T Transfected ACE2 CellLysate using ACE2 Mouse Monoclonla Antibody diluted at 1:50,000.



Immunohistochemical analysis of paraffin-embedded Human Kidney Tissue using ACE2 Mouse monoclonal antibody diluted at 1:200.



IF analysis of 293T Transfected ACE2 CellLysate using ACE2 Mouse Monoclonla Antibody diluted at 1:500.