

BAP31 Polyclonal Antibody

Catalog No :	YT0451
Reactivity :	Human;Mouse;Rat
Applications :	WB;ELISA
Target :	BAP31
Fields :	>>Protein processing in endoplasmic reticulum;>>Human papillomavirus infection
Gene Name :	BCAP31
Protein Name :	B-cell receptor-associated protein 31
Human Gene Id :	10134
Human Swiss Prot No :	P51572
Mouse Gene Id :	27061
Mouse Swiss Prot No :	Q61335
Immunogen :	The antiserum was produced against synthesized peptide derived from human BAP31. AA range:151-200
Specificity :	BAP31 Polyclonal Antibody detects endogenous levels of BAP31 protein.
Formulation :	Liquid in PBS containing 50% glycerol, 0.5% BSA and 0.02% sodium azide.
Source :	Polyclonal, Rabbit,IgG
Dilution :	WB 1:500 - 1:2000. ELISA: 1:40000. Not yet tested in other applications.
Purification :	The antibody was affinity-purified from rabbit antiserum by affinity-chromatography using epitope-specific immunogen.
Concentration :	1 mg/ml

Storage Stability : -15°C to -25°C/1 year (Do not lower than -25°C)

Observed Band : 28kD

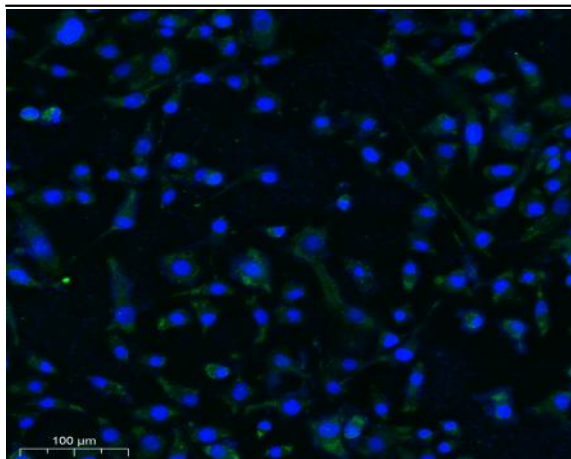
Background : This gene encodes a member of the B-cell receptor associated protein 31 superfamily. The encoded protein is a multi-pass transmembrane protein of the endoplasmic reticulum that is involved in the anterograde transport of membrane proteins from the endoplasmic reticulum to the Golgi and in caspase 8-mediated apoptosis. Microdeletions in this gene are associated with contiguous ABCD1/DXS1375E deletion syndrome (CADD5), a neonatal disorder. Alternative splicing of this gene results in multiple transcript variants. Two related pseudogenes have been identified on chromosome 16. [provided by RefSeq, Jan 2012],

Function : disease:Microdeletions in BCAP31 are involved in the contiguous ABCD1/DXS1375E deletion syndrome (CADD5) [MIM:300475]. Patients manifest profound neonatal hypotonia, subsequent failure to thrive, and cholestatic liver disease.,function:May play a role in anterograde transport of membrane proteins from the endoplasmic reticulum to the Golgi. May be involved in CASP8-mediated apoptosis.,PTM:Cleaved by CASP8 and other caspases.,similarity:Belongs to the BCAP29/BCAP31 family.,subcellular location:May shuttle between the ER and the intermediate compartment/cis-Golgi complex.,subunit:Homodimer and heterodimer with BCAP29. Binds CASP8 (isoform 9) as a complex containing BCAP31, BCAP29, BCL2 and/or BCL2L1. Interacts with VAMP3, VAMP1 and membrane IgD immunoglobulins. May interact with ACTG1 and non-muscle myosin II. Interacts with PTPLB.,tissue specificity:Ubiquitous.,

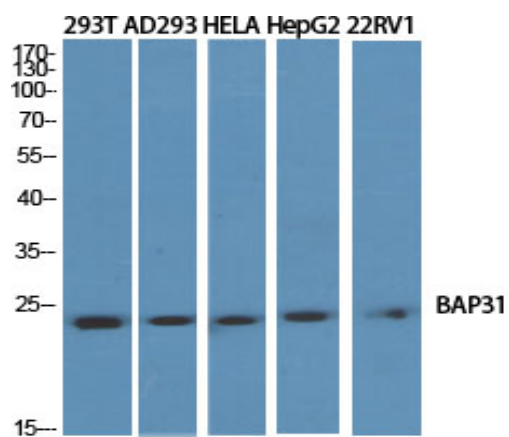
Subcellular Location : Endoplasmic reticulum membrane ; Multi-pass membrane protein . Endoplasmic reticulum-Golgi intermediate compartment membrane ; Multi-pass membrane protein . May shuttle between the ER and the intermediate compartment/cis-Golgi complex (PubMed:9396746). Associates with the mitochondria-associated endoplasmic reticulum membrane via interaction with TOMM40 (PubMed:31206022). .

Expression : Ubiquitous. Highly expressed in neurons and discrete endocrine cells.

Products Images



Immunofluorescence analysis of Caco2 cell. 1, primary Antibody was diluted at 1:100(4°C overnight). 2, Goat Anti Rabbit IgG (H&L) - AFluor 594 Secondary antibody(catalog No: RS3611) was diluted at 1:500(room temperature, 50min).



Western Blot analysis of various cells using BAP31 Polyclonal Antibody diluted at 1:2000