

**BCA3 Polyclonal Antibody**

<b>Catalog No :</b>	YT0462
<b>Reactivity :</b>	Human;Mouse
<b>Applications :</b>	WB;IHC;IF;ELISA
<b>Target :</b>	BCA3
<b>Gene Name :</b>	AKIP1
<b>Protein Name :</b>	A-kinase-interacting protein 1
<b>Human Gene Id :</b>	56672
<b>Human Swiss Prot No :</b>	Q9NQ31
<b>Mouse Swiss Prot No :</b>	Q9JJR5
<b>Immunogen :</b>	The antiserum was produced against synthesized peptide derived from human BCA3. AA range:111-160
<b>Specificity :</b>	BCA3 Polyclonal Antibody detects endogenous levels of BCA3 protein.
<b>Formulation :</b>	Liquid in PBS containing 50% glycerol, 0.5% BSA and 0.02% sodium azide.
<b>Source :</b>	Polyclonal, Rabbit,IgG
<b>Dilution :</b>	WB 1:500 - 1:2000. IHC 1:100 - 1:300. ELISA: 1:20000.. IF 1:50-200
<b>Purification :</b>	The antibody was affinity-purified from rabbit antiserum by affinity-chromatography using epitope-specific immunogen.
<b>Concentration :</b>	1 mg/ml
<b>Storage Stability :</b>	-15°C to -25°C/1 year(Do not lower than -25°C)
<b>Observed Band :</b>	26kD

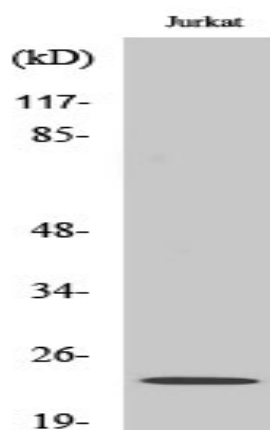
**Background :** This gene encodes a nuclear protein that interacts with protein kinase A catalytic subunit, and regulates the effect of the cAMP-dependent protein kinase signaling pathway on the NF-kappa-B activation cascade. Alternatively spliced transcript variants have been described for this gene. [provided by RefSeq, Oct 2011],

**Function :** subcellular location:Locates to punctate spots.,subunit:Interacts with PRKACA.,tissue specificity:Expressed at high levels in adult heart and at lower levels in brain, testis, ovary and skeletal muscle. Up-regulated in some breast cancer cell lines. Isoform 1 and isoform 3 are expressed in fetal brain.,

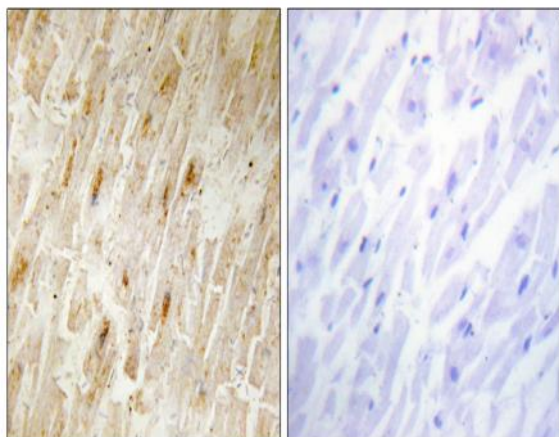
**Subcellular Location :** Nucleus . Locates to punctate spots.

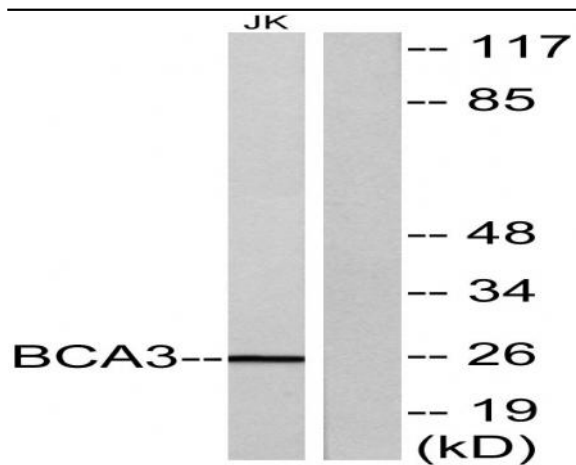
**Expression :** Expressed at high levels in adult heart and at lower levels in brain, testis, ovary and skeletal muscle. Up-regulated in some breast cancer cell lines. Isoform 1 and isoform 3 are expressed in fetal brain.

## Products Images

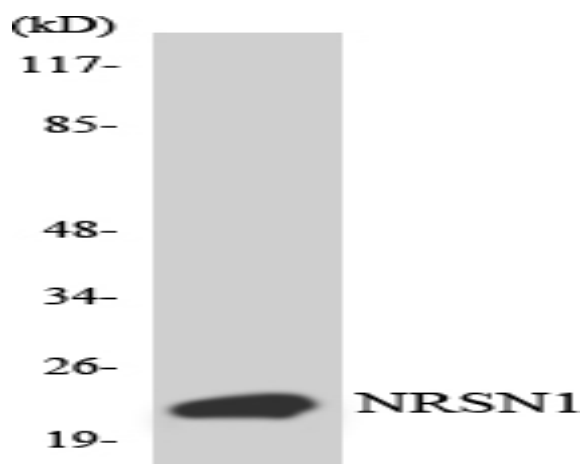


Western Blot analysis of various cells using BCA3 Polyclonal Antibody cells nucleus extracted by Minute TM Cytoplasmic and Nuclear Fractionation kit (SC-003, Inventbiotech, MN, USA).





Western blot analysis of lysates from Jurkat cells, using BCA3 Antibody. The lane on the right is blocked with the synthesized peptide.



Western blot analysis of the lysates from HepG2 cells using BCA3 antibody.