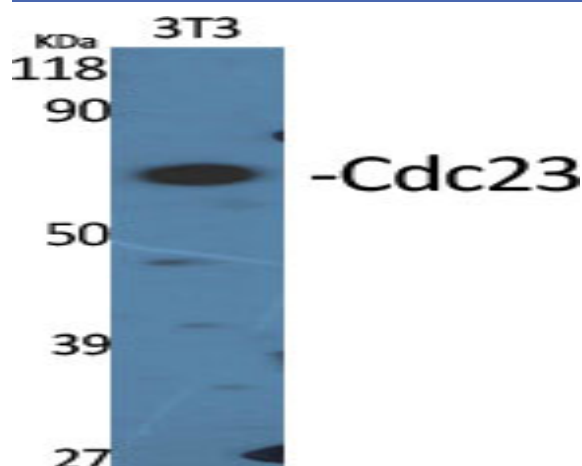


## Cdc23 Polyclonal Antibody

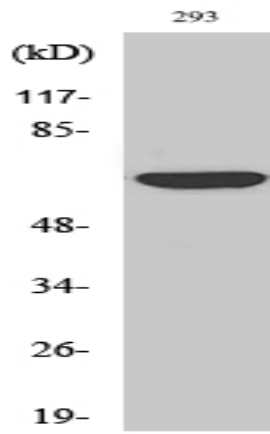
<b>Catalog No :</b>	YT0792
<b>Reactivity :</b>	Human;Mouse;Monkey
<b>Applications :</b>	WB;ELISA
<b>Target :</b>	Cdc23
<b>Fields :</b>	>>Cell cycle;>>Oocyte meiosis;>>Ubiquitin mediated proteolysis;>>Progesterone-mediated oocyte maturation;>>Human T-cell leukemia virus 1 infection
<b>Gene Name :</b>	CDC23
<b>Protein Name :</b>	Cell division cycle protein 23 homolog
<b>Human Gene Id :</b>	8697
<b>Human Swiss Prot No :</b>	Q9UJX2
<b>Mouse Gene Id :</b>	52563
<b>Mouse Swiss Prot No :</b>	Q8BGZ4
<b>Immunogen :</b>	The antiserum was produced against synthesized peptide derived from human APC8. AA range:251-300
<b>Specificity :</b>	Cdc23 Polyclonal Antibody detects endogenous levels of Cdc23 protein.
<b>Formulation :</b>	Liquid in PBS containing 50% glycerol, 0.5% BSA and 0.02% sodium azide.
<b>Source :</b>	Polyclonal, Rabbit,IgG
<b>Dilution :</b>	WB 1:500 - 1:2000. ELISA: 1:20000. Not yet tested in other applications.
<b>Purification :</b>	The antibody was affinity-purified from rabbit antiserum by affinity-chromatography using epitope-specific immunogen.

<b>Concentration :</b>	1 mg/ml
<b>Storage Stability :</b>	-15°C to -25°C/1 year(Do not lower than -25°C)
<b>Observed Band :</b>	69kD
<b>Cell Pathway :</b>	Cell_Cycle_G1S;Cell_Cycle_G2M_DNA;Oocyte meiosis;Ubiquitin mediated proteolysis;Progesterone-mediated oocyte maturation;
<b>Background :</b>	The protein encoded by this gene shares strong similarity with <i>Saccharomyces cerevisiae</i> Cdc23, a protein essential for cell cycle progression through the G2/M transition. This protein is a component of anaphase-promoting complex (APC), which is composed of eight protein subunits and highly conserved in eukaryotic cells. APC catalyzes the formation of cyclin B-ubiquitin conjugate that is responsible for the ubiquitin-mediated proteolysis of B-type cyclins. This protein and 3 other members of the APC complex contain the TPR (tetratricopeptide repeat), a protein domain important for protein-protein interaction. [provided by RefSeq, Jul 2008],
<b>Function :</b>	function:Component of the anaphase promoting complex/cyclosome (APC/C), a cell cycle-regulated ubiquitin ligase that controls progression through mitosis and the G1 phase of the cell cycle.,pathway:Protein modification; protein ubiquitination.,PTM:Phosphorylated. Phosphorylation on Thr-556 occurs specifically during mitosis.,similarity:Belongs to the APC8/CDC23 family.,similarity:Contains 9 TPR repeats.,subunit:The APC/C is composed of at least 11 subunits.,
<b>Subcellular Location :</b>	intracellular,nucleoplasm,anaphase-promoting complex,cytosol,
<b>Expression :</b>	Bone marrow,Brain,Duodenum,Epithelium,Pancreas,Placenta,

## Products Images



Western Blot analysis of various cells using Cdc23 Polyclonal Antibody diluted at 1:2000



Western Blot analysis of COS7 cells using Cdc23 Polyclonal Antibody diluted at 1:2000