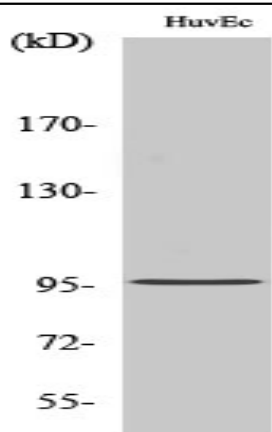


Cdc27 Polyclonal Antibody

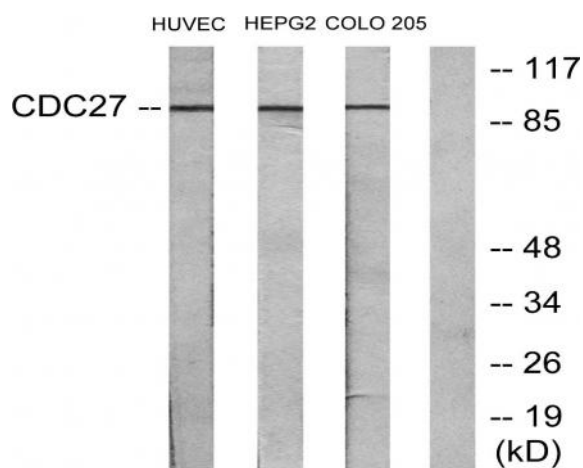
Catalog No :	YT0802
Reactivity :	Human;Mouse;Rat
Applications :	WB;IHC;IF;ELISA
Target :	Cdc27
Fields :	>>Cell cycle;>>Oocyte meiosis;>>Ubiquitin mediated proteolysis;>>Progesterone-mediated oocyte maturation;>>Human T-cell leukemia virus 1 infection
Gene Name :	CDC27
Protein Name :	Cell division cycle protein 27 homolog
Human Gene Id :	996
Human Swiss Prot No :	P30260
Mouse Gene Id :	217232
Mouse Swiss Prot No :	A2A6Q5
Rat Gene Id :	360643
Rat Swiss Prot No :	Q4V8A2
Immunogen :	The antiserum was produced against synthesized peptide derived from human H-NUC. AA range:361-410
Specificity :	Cdc27 Polyclonal Antibody detects endogenous levels of Cdc27 protein.
Formulation :	Liquid in PBS containing 50% glycerol, 0.5% BSA and 0.02% sodium azide.
Source :	Polyclonal, Rabbit,IgG
Dilution :	WB 1:500 - 1:2000. IHC 1:100 - 1:300. ELISA: 1:5000.. IF 1:50-200

Purification :	The antibody was affinity-purified from rabbit antiserum by affinity-chromatography using epitope-specific immunogen.
Concentration :	1 mg/ml
Storage Stability :	-15°C to -25°C/1 year(Do not lower than -25°C)
Observed Band :	92kD
Cell Pathway :	Cell_Cycle_G1S;Cell_Cycle_G2M_DNA;Oocyte meiosis;Ubiquitin mediated proteolysis;Progesterone-mediated oocyte maturation;
Background :	<p>The protein encoded by this gene shares strong similarity with <i>Saccharomyces cerevisiae</i> protein Cdc27, and the gene product of <i>Schizosaccharomyces pombe</i> nuc 2. This protein is a component of the anaphase-promoting complex (APC), which is composed of eight protein subunits and is highly conserved in eukaryotic cells. This complex catalyzes the formation of cyclin B-ubiquitin conjugate, which is responsible for the ubiquitin-mediated proteolysis of B-type cyclins. The protein encoded by this gene and three other members of the APC complex contain tetratricopeptide (TPR) repeats, which are important for protein-protein interactions. This protein was shown to interact with mitotic checkpoint proteins including Mad2, p53CDC and BUBR1, and it may thus be involved in controlling the timing of mitosis. Alternative splicing of this gene results in multiple transcript variants. Related pseudogenes have been i</p>
Function :	PTM:Phosphorylated. Phosphorylation on Ser-426 and Thr-446 occurs specifically during mitosis.,similarity:Belongs to the APC3/CDC27 family.,similarity:Contains 9 TPR repeats.,subunit:Interacts with RB.,
Subcellular Location :	Nucleus . Cytoplasm, cytoskeleton, spindle .
Expression :	Epithelium,Uterus,

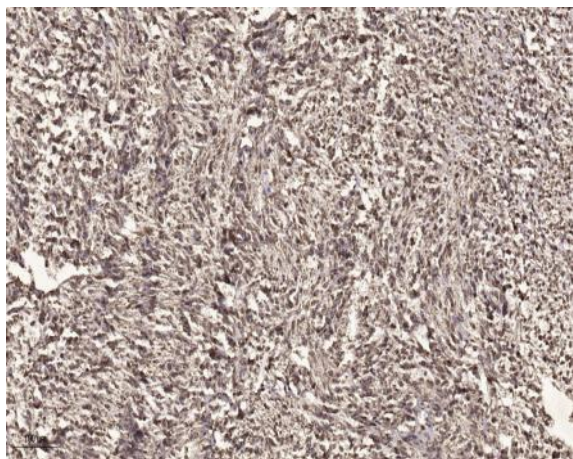
Products Images



Western Blot analysis of various cells using Cdc27 Polyclonal Antibody



Western blot analysis of lysates from HUVEC, HepG2, and COLO205 cells, using H-NUC Antibody. The lane on the right is blocked with the synthesized peptide.



Immunohistochemical analysis of paraffin-embedded human small intestinal carcinoma tissue. 1, primary Antibody was diluted at 1:200 (4° overnight). 2, Sodium citrate pH 6.0 was used for antigen retrieval (>98° C, 20min). 3, Secondary antibody was diluted at 1:200