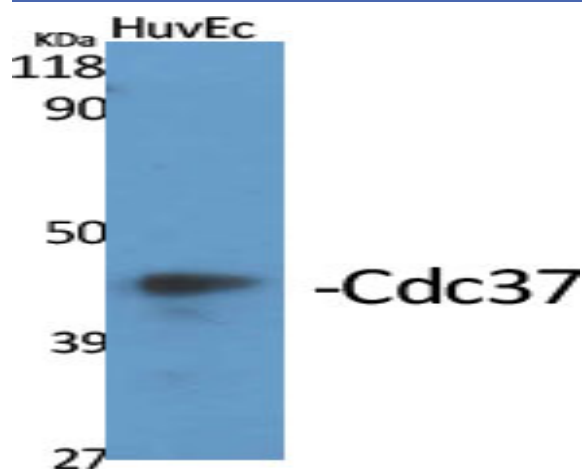


Cdc37 Polyclonal Antibody

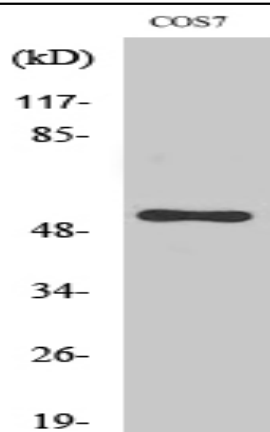
| | |
|------------------------------|--|
| Catalog No : | YT0805 |
| Reactivity : | Human;Mouse;Rat;Monkey |
| Applications : | WB;IHC;IF;ELISA |
| Target : | Cdc37 |
| Fields : | >>PI3K-Akt signaling pathway |
| Gene Name : | CDC37 |
| Protein Name : | Hsp90 co-chaperone Cdc37 |
| Human Gene Id : | 11140 |
| Human Swiss Prot No : | Q16543 |
| Mouse Gene Id : | 12539 |
| Mouse Swiss Prot No : | Q61081 |
| Rat Gene Id : | 114562 |
| Rat Swiss Prot No : | Q63692 |
| Immunogen : | The antiserum was produced against synthesized peptide derived from human CDC37. AA range:1-50 |
| Specificity : | Cdc37 Polyclonal Antibody detects endogenous levels of Cdc37 protein. |
| Formulation : | Liquid in PBS containing 50% glycerol, 0.5% BSA and 0.02% sodium azide. |
| Source : | Polyclonal, Rabbit,IgG |
| Dilution : | WB 1:500 - 1:2000. IHC 1:100 - 1:300. IF 1:200 - 1:1000. ELISA: 1:20000. Not yet tested in other applications. |

| | |
|-------------------------------|--|
| Purification : | The antibody was affinity-purified from rabbit antiserum by affinity-chromatography using epitope-specific immunogen. |
| Concentration : | 1 mg/ml |
| Storage Stability : | -15°C to -25°C/1 year(Do not lower than -25°C) |
| Observed Band : | 44kD |
| Cell Pathway : | PI3K/Akt |
| Background : | The protein encoded by this gene is highly similar to Cdc 37, a cell division cycle control protein of <i>Sacchomyces cerevisiae</i> . This protein is a molecular chaperone with specific function in cell signal transduction. It has been shown to form complex with Hsp90 and a variety of protein kinases including CDK4, CDK6, SRC, RAF-1, MOK, as well as eIF2 alpha kinases. It is thought to play a critical role in directing Hsp90 to its target kinases. [provided by RefSeq, Jul 2008], |
| Function : | function:Co-chaperone that binds to numerous kinases and promotes their interaction with the Hsp90 complex, resulting in stabilization and promotion of their activity.,PTM:Constitutively sumoylated by UBE2L.,similarity:Belongs to the CDC37 family.,subunit:Forms a complex with Hsp90. Interacts with AR, CDK4, CDK6, EIF2AK1 and RB1., |
| Subcellular Location : | Cytoplasm . |
| Expression : | Lymph,Placenta, |

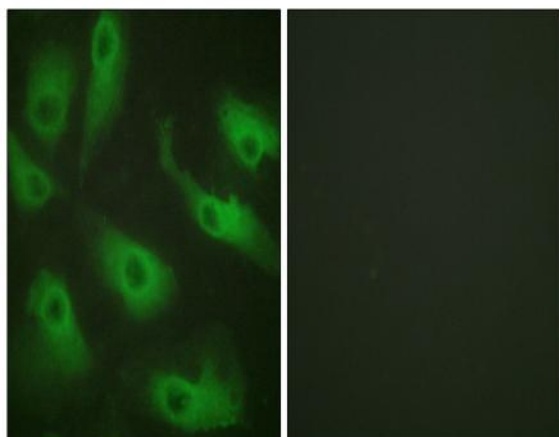
Products Images



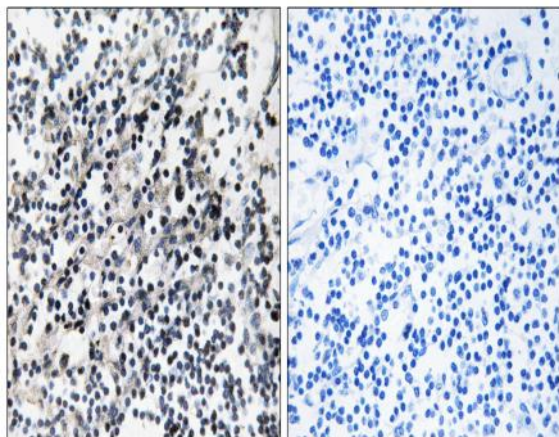
Western Blot analysis of various cells using Cdc37 Polyclonal Antibody



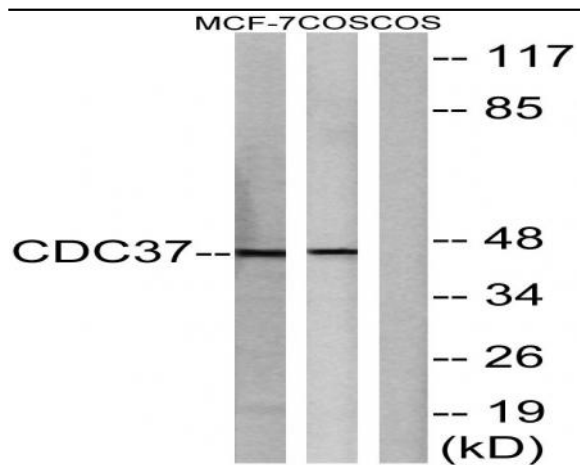
Western Blot analysis of MCF7 cells using Cdc37 Polyclonal Antibody



Immunofluorescence analysis of HeLa cells, using CDC37 Antibody. The picture on the right is blocked with the synthesized peptide.



Immunohistochemistry analysis of paraffin-embedded human placenta tissue, using CDC37 Antibody. The picture on the right is blocked with the synthesized peptide.



Western blot analysis of lysates from MCF-7 and COS7 cells, using CDC37 Antibody. The lane on the right is blocked with the synthesized peptide.