

BMP-5 Polyclonal Antibody

Catalog No :	YT0501
Reactivity :	Human;Mouse
Applications :	WB;IHC;IF;ELISA
Target :	BMP-5
Fields :	>>Cytokine-cytokine receptor interaction;>>TGF-beta signaling pathway;>>Hippo signaling pathway
Gene Name :	BMP5
Protein Name :	Bone morphogenetic protein 5
Human Gene Id :	653
Human Swiss Prot No :	P22003
Mouse Gene Id :	12160
Mouse Swiss Prot No :	P49003
Immunogen :	The antiserum was produced against synthesized peptide derived from human BMP-5. AA range:114-163
Specificity :	BMP-5 Polyclonal Antibody detects endogenous levels of BMP-5 protein.
Formulation :	Liquid in PBS containing 50% glycerol, 0.5% BSA and 0.02% sodium azide.
Source :	Polyclonal, Rabbit,IgG
Dilution :	WB 1:500 - 1:2000. IHC 1:100 - 1:300. ELISA: 1:40000.. IF 1:50-200
Purification :	The antibody was affinity-purified from rabbit antiserum by affinity-chromatography using epitope-specific immunogen.
Concentration :	1 mg/ml

Storage Stability : -15°C to -25°C/1 year(Do not lower than -25°C)

Observed Band : 52kD

Cell Pathway : Hedgehog;TGF-beta;

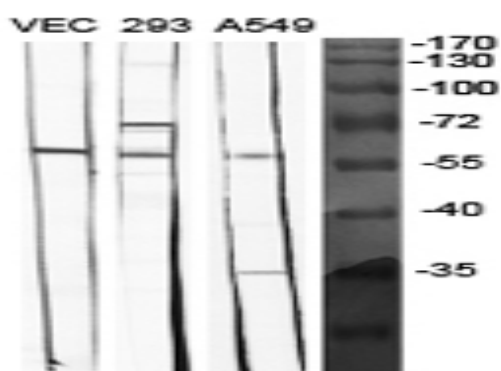
Background : This gene encodes a secreted ligand of the TGF-beta (transforming growth factor-beta) superfamily of proteins. Ligands of this family bind various TGF-beta receptors leading to recruitment and activation of SMAD family transcription factors that regulate gene expression. The encoded preproprotein is proteolytically processed to generate each subunit of the disulfide-linked homodimer, which plays a role in bone and cartilage development. Polymorphisms in this gene may be associated with osteoarthritis in human patients. This gene is differentially regulated in multiple human cancers. This gene encodes distinct protein isoforms that may be similarly proteolytically processed. [provided by RefSeq, Jul 2016],

Function : function:Induces cartilage and bone formation.,online information:Bone morphogenetic protein 5 entry,similarity:Belongs to the TGF-beta family.,subunit:Homodimer; disulfide-linked.,tissue specificity:Expressed in the lung and liver.,

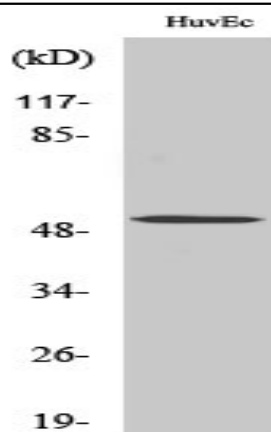
Subcellular Location : Secreted.

Expression : Expressed in the lung and liver.

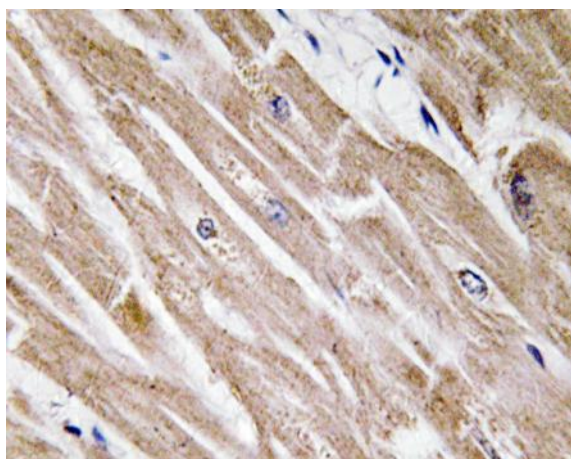
Products Images



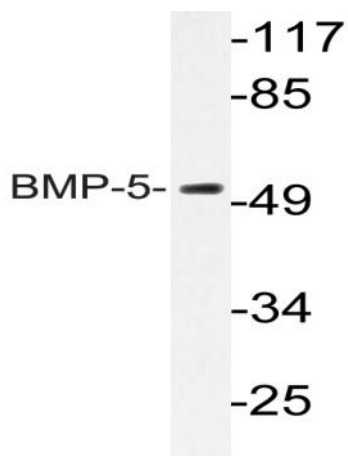
Western Blot analysis of various cells using BMP-5 Polyclonal Antibody diluted at 1:1000



Western Blot analysis of HeLa cells using BMP-5 Polyclonal Antibody diluted at 1:1000



Immunohistochemistry analysis of BMP-5 antibody in paraffin-embedded human heart tissue.



Western blot analysis of lysate from HUVEC cells, using BMP-5 antibody.